

Geographical Disease Risk Index (GDRI)

Edition 002 - 18 January 2016

Release 44 - 31 July 2024

Introduction

The GDRI is a constituent part of Chapter 3 Care and selection of whole blood and component donors (including donors of pre-deposit autologous blood) Chapter 20 (tissue banking: selection of donors) and Chapter 22 (haemopoietic progenitor cells) of the Guidelines for the Blood Transfusion Services in the United Kingdom.

These criteria are reviewed regularly to ensure that the products collected are of the highest quality and of sufficient quantity to meet the needs of the United Kingdom Blood Transfusion & Tissue Transplantation Services.

JPAC is responsible for this document and receives professional advice from the Standing Advisory Committees that form part of its structure.

Users of these guidelines must ensure that they have the latest version and that recent changes have been implemented (usually within three months) by their national service.

Latest Updates lists alterations to the guidelines made since publication of this edition.

Comments about the content of these guidelines, including notification of errors, omissions and suggestions for improvements, should be sent to the Chair of the Standing Advisory Committee for the Care and Selection of Donors (SACCSD):

Dr Angus Wells angus.wells@nhsbt.nhs.uk

Contents

Introduction	1
Document and Change Control	3
General Principles	4
Use of this Index	5
Malaria	6
Human Immunodeficiency Virus (HIV) / Acquired Immune Deficiency Syndrome (AIDS)	7
A-Z Index	8
A-Z Topics	26
Updates	129

Document and Change Control

The GDRI is under the continuing review of the Standing Advisory Committees for the Care and Selection of Donors (SACCSD) and for Transfusion Transmitted Infection (SACTTI). This is to ensure that they are accurate and up to date. All changes have the approval of the UKBTS Joint Professional Advisory Committee (JPAC).

Change Notification.

Changes are notified to the Medical Director and to the Quality Manager of each of the four national services by a Change Notification from the Chairman of JPAC. All changes will have the approval of JPAC.

Implementation of changes is the responsibility of the individual national service.

Document version terminology.

A version shall be any of the following:

Extensive revisions of this document are known as '**Editions**'.

Changes following the issue of 'Change Notification Letters' are known as '**Releases**'.

Changes to the website, which do not involve a change to the medical or scientific content, are given an '**Issue**' number.

Edition Date, Release Date and Issue Date is the date on which an Edition, Release or Issue is first published on the UKBTS website.

Changes to printed versions.

The **Quality Manager** of each Blood Service will effect changes to the document. They will be informed when a new electronic version is released. The **Quality Manager** is responsible for ensuring that there is an effective Document Control and Document Change procedure in operation within their Blood Service to ensure that only up to date versions are in use and that all authorized copies, both electronic and paper, are traceable.

Individual users of the GDRI are responsible for ensuring that they are using an up-to-date version.

Changes to the website versions.

The website will always display the up to date version. Any errors should be notified to JPACOffice@nhsbt.nhs.uk

General Principles

The GDRI should be used to assist selection of donors giving whole blood, blood components (red cells, platelets, plasma and granulocytes), haemopoietic progenitor cells and tissues for therapeutic use.

Donor Selection Procedures aim to minimize the risk of transfusion transmitted infection. Travel to; birth/maternal birth or residency in; and in some cases sexual activity with residents of certain countries, is associated with an increased risk of exposure to infections such as malaria, T cruzi, WNV and HIV. These risks may vary over time and new diseases may occur. Where there is a rapidly emerging geographical disease risk (e.g. SARS or Pandemic Flu) these will be communicated via a **Change Notification** to be used in conjunction with this document.

This list is compiled specifically for risks to the blood and tissue supply in the United Kingdom and may vary from risks or recommendations provided for the protection of the traveller.

To assess the risk of an individual carrying such infections, look up the countries:

- that they have visited
- for which they report sexual contact with a resident or former resident
- in which they were born
- in which their mother was born

If a risk is shown for that country, look at the relevant entry in the appropriate Donor Selection Guidelines (DSG) for the donation type (e.g. Whole Blood & Components or the relevant Tissue DSG) to assess the individual's suitability to donate.

Table of Donor Selection Guidelines (DSG) cross-references

Chikungunya Virus	<u>TDSG-BM</u>	<u>TDSG-CB</u>	<u>TDSG-DD</u>	<u>TDSG-LD</u>	<u>WB-DSG</u>
Dengue	<u>TDSG-BM</u>	<u>TDSG-CB</u>	<u>TDSG-DD</u>	<u>TDSG-LD</u>	<u>WB-DSG</u>
HIV	<u>TDSG-BM</u>	<u>TDSG-CB</u>	<u>TDSG-DD</u>	<u>TDSG-LD</u>	<u>WB-DSG</u>
Malaria	<u>TDSG-BM</u>	<u>TDSG-CB</u>	<u>TDSG-DD</u>	<u>TDSG-LD</u>	<u>WB-DSG</u>
T Cruzii	<u>TDSG-BM</u>	<u>TDSG-CB</u>	<u>TDSG-DD</u>	<u>TDSG-LD</u>	<u>WB-DSG</u>
WNV	<u>TDSG-BM</u>	<u>TDSG-CB</u>	<u>TDSG-DD</u>	<u>TDSG-LD</u>	<u>WB-DSG</u>
Viral Haemorrhagic Fever Risk	<u>TDSG-BM</u>	<u>TDSG-CB</u>	<u>TDSG-DD</u>	<u>TDSG-LD</u>	<u>WB-DSG</u>
Zika Virus	<u>TDSG-BM</u>	<u>TDSG-CB</u>	<u>TDSG-DD</u>	<u>TDSG-LD</u>	<u>WB-DSG</u>

This section was last updated in GDRI Edition 002, Release 01

Use of this Index

This index has been prepared to assist the accurate assessment of the geographical risks and contains information on:

- Malaria
- T. cruzi
- HIV risk in Sub Saharan Africa
- WNV
- Chikungunya virus (CHIKV)
- Viral Haemorrhagic Fever Risk (endemic countries only)

Table of Donor Selection Guidelines (DSG) cross-references

CHIKV	<u>TDSG-BM</u>	<u>TDSG-CB</u>	<u>TDSG-DD</u>	<u>TDSG-LD</u>	<u>WB-DSG</u>
Dengue	<u>TDSG-BM</u>	<u>TDSG-CB</u>	<u>TDSG-DD</u>	<u>TDSG-LD</u>	<u>WB-DSG</u>
HIV	<u>TDSG-BM</u>	<u>TDSG-CB</u>	<u>TDSG-DD</u>	<u>TDSG-LD</u>	<u>WB-DSG</u>
Malaria	<u>TDSG-BM</u>	<u>TDSG-CB</u>	<u>TDSG-DD</u>	<u>TDSG-LD</u>	<u>WB-DSG</u>
T. Cruzii	<u>TDSG-BM</u>	<u>TDSG-CB</u>	<u>TDSG-DD</u>	<u>TDSG-LD</u>	<u>WB-DSG</u>
WNV	<u>TDSG-BM</u>	<u>TDSG-CB</u>	<u>TDSG-DD</u>	<u>TDSG-LD</u>	<u>WB-DSG</u>
Viral Haemorrhagic Fever Risk	<u>TDSG-BM</u>	<u>TDSG-CB</u>	<u>TDSG-DD</u>	<u>TDSG-LD</u>	<u>WB-DSG</u>
Zika Virus	<u>TDSG-BM</u>	<u>TDSG-CB</u>	<u>TDSG-DD</u>	<u>TDSG-LD</u>	<u>WB-DSG</u>

This section was last updated in GDRi Edition 002, Release 002.

Malaria

Information concerning malaria risk has been sourced from Health Protection Scotland (www.travax.nhs.uk/) with some modifications to account for typical donor travel patterns, entry points to the countries concerned, areas where reporting is compromised and ease of use for end users. They are not identical to those found on the 'Fit for Travel' website which is designed to inform travellers decisions about anti-malarial therapy rather than give assurance of safety of blood donations for recipient patients.

Countries with malarial risk have been categorised into three groups:

- A. Countries where the malarial risk is present in the whole country all year or with very clear seasonal guidance.
- B. Countries where only parts of the country are affected.
- C. Indicates that only part of the country is affected in discrete pockets, or the risk of infection is low or that there are few visitors to the affected areas. It is likely that tourists who visit these countries will be able to donate but individual assessment must be applied. Donors are likely to have detailed knowledge of the malarial areas visited. The health care professional should establish whether the donor sought advice prior to travel or not and if they were advised to take anti malarial precautions.






Malaria Maps

The maps included are to be used to accompany the GDRI when assessing the malaria risk for a donor. They have been sourced from the Fit for travel website. It is important to apply the GDRI guidance for **all** infection risks; these maps only provide advice for malaria risk.

Use Of Maps

Maps are provided to allow staff to assess the malaria risk for the areas within these countries that a donor has visited. **The text of the GDRI should be taken as the main source to make decisions.** The maps present information about neighbouring countries but this should not be used for malarial assessment. The advice below each map relates to the Fit for travel website. Decisions regarding malaria guidance should be made using the template below.

The colours used in the maps are presented below.

Colour	Sample	Text	Action
Red		High risk	Apply Malaria Donor Selection Guideline
Dark pink /hatched		Variable risk/low risk	Apply Malaria Donor Selection Guideline
Light pink		Low to no risk	Can donate
Yellow		Surrounding country with malaria risk	Do not use for malaria assessment
Green		(Surrounding country with no malaria risk)	Do not use for malaria assessment

All maps were downloaded from the Fit for travel website (www.fitfortravel.nhs.uk)

Airport Stopovers

The definition of an Airport Stopover, as approved by The Standing Advisory Committee on Transfusion Transmitted Infections, is:

A transit through an airport during which the traveller has not left the airport.

When the donor's visit has consisted **only** of an airport stopover there is no need to refer to the Geographical Disease Risk Index.

This section was last updated in GDRI Edition 002, Release 24, Issue 01

Human Immunodeficiency Virus (HIV) / Acquired Immune Deficiency Syndrome (AIDS)

HIV/AIDS is common in some areas of the world, and sexual activity with partners in these countries carries a risk of infection. This Index identifies the countries of Sub Saharan Africa to facilitate interpretation of the guidance. However the health care professional should consider all other risks of HIV associated with travel and remember that this is not restricted to Sub Saharan Africa.

If the donor reports sexual activity with a partner in one of the countries listed as Sub Saharan Africa in the table, or with a partner who may have been sexually active in one of these areas, refer to the Blood Safety Entry in the Donor Selection Guidelines.

This section was last updated in GDRI Edition 001, Release 01

A-Z Index

A

Abu Dhabi	United Arab Emirates	121
Acre (Brazil)	Brazil	37
Acre (Israel)	Israel	71
Adana	Turkey	119
Addis Ababa	Ethiopia	54
Aden	Yemen	127
Afghanistan	Afghanistan	26
Ahē	French Polynesia	57
Ajman	United Arab Emirates	121
Aklan	Philippines	98
Al Hoceima	Morocco	87
Alajuela	Costa Rica	46
Alaska	United States of America	122
Albania	Albania	26
Algeria	Algeria	27
Alto Parana	Paraguay	97
Amacuro	Venezuela	123
Amapa	Brazil	37
Amazon	Brazil	37
Amazon River (Brazil)	Brazil	37
Amazon River (Peru)	Peru	97
Amazonas	Brazil	37
Amazonia (Brazil)	Brazil	37
Amazonia (Venezuela)	Venezuela	123
American Samoa	American Samoa	27
Amikova Plain	Turkey	119
Andaman and Nicobar Islands	India	66
Andorra	Andorra	27
Anegada	British Virgin Islands	38
Angola	Angola	28
Anguilla	Anguilla	28
Antalya	Turkey	119
Antarctica	Antarctica	28
Antigua	Antigua and Barbuda	29
Antigua and Barbuda	Antigua and Barbuda	29
Apure	Venezuela	123
Ararat Valley	Armenia	29

For	See	Page
Argentina	Argentina	29
Armenia	Armenia	29
Aruba	Aruba	29
Ascension Islands	Saint Helena	102
Ashmore and Cartier Islands	Ashmore and Cartier Islands	30
Asir	Saudi Arabia	105
Asmara	Eritrea	52
Austral Islands (The)	French Polynesia	57
Australia	Australia	30
Austria	Austria	31
Ayacucho	Peru	97
Azerbaijan	Azerbaijan	31
Azores	Portugal	100
B		
Bahamas (The)	Bahamas (The)	32
Bahrain	Bahrain	32
Baker Island	Baker Island	32
Baku	Azerbaijan	31
Balearic Islands	Spain	111
Bali	Indonesia	68
Bangkok	Thailand	115
Bangladesh	Bangladesh	32
Bara	Nepal	90
Barbados	Barbados	33
Barbuda	Antigua and Barbuda	29
Basra	Iraq	69
Bass Islands (The)	French Polynesia	57
Beijing	China	43
Belarus	Belarus	34
Belem City	Brazil	37
Belgium	Belgium	34
Belize	Belize	34
Belorussia	Belarus	34
Beni	Bolivia	36
Benin	Benin	34
Bermuda	Bermuda	35
Bhutan	Bhutan	35
Biliran	Philippines	98
Boa Vista (Brazil)	Brazil	37

For	See	Page
Boa Vista (Cape Verde)	Cape Verde	41
Bohol	Philippines	98
Bolivar	Venezuela	123
Bolivia	Bolivia	36
Bonaire	Former Netherlands Antilles	55
Bora Bora	French Polynesia	57
Borneo	Borneo	36
Bosnia	Bosnia and Herzegovina	36
Bosnia and Herzegovina	Bosnia and Herzegovina	36
Boteti	Botswana	37
Botswana	Botswana	37
Bouvet Island	Bouvet Island	37
Brazil	Brazil	37
British Antarctic	Antarctica	28
British Virgin Islands	British Virgin Islands	38
Brunei Darussalam	Brunei Darussalam	38
Bulgaria	Bulgaria	39
Burkina Faso	Burkina Faso	39
Burma	Myanmar	88
Burundi	Burundi	39
Bushehr	Iran	68
C		
Caaguazú	Paraguay	97
Cabina	The Republic of The Congo	117
Cajamarca	Peru	97
Cambodia	Cambodia	40
Cameroon	Cameroon	40
Camiguin	Philippines	98
Campeche	Mexico	84
Canada	Canada	40
Canal zone	Panama	96
Canary Islands	Spain	111
Cancun	Mexico	84
Canendiyu	Paraguay	97
Cape Verde	Cape Verde	41
Capiz	Philippines	98
Caracas	Venezuela	123
Caribbean	See specific island(s) visited	
Catanduanes	Philippines	98

For	See	Page
Cayman Islands	Cayman Islands	41
Cebu	Philippines	98
Central African Republic	Central African Republic	42
Cerro de Pasco	Peru	97
Chachapoyas	Peru	97
Chad	Chad	42
Chahar Mahal va Bakhtiari	Iran	68
Chanca-Andahuaylas	Peru	97
Chang Jiang River	China	43
Chiang Mai	Thailand	115
Chiapas	Mexico	84
Chihuahua	Mexico	84
Chile	Chile	42
China	China	43
China (Hong Kong)	Hong Kong (S.A.R.)	65
Chirang	Bhutan	35
Chobe	Botswana	37
Christmas Island	Christmas Island	43
Chuquisaca	Bolivia	36
Clipperton Island	Clipperton Island	43
Cochabamba	Bolivia	36
Cocos (Keeling) Islands	Cocos (Keeling) Islands	44
Colombia	Colombia	44
Colombo	Sri Lanka	112
Comoros	Comoros	45
Congo	The Democratic Republic of The Congo	116
Congo	The Republic of The Congo	117
Cook Islands	Cook Islands	45
Corfu	Greece	60
Corrientes	Argentina	29
Corsica	France	56
Costa Rica	Costa Rica	46
Cote D'Ivoire	Cote D'Ivoire	46
Crete	Greece	60
Croatia	Croatia	46
Cuba	Cuba	47
Cukurova	Turkey	119
Curacao	Curacao	47

For	See	Page
Cusco	Peru	97
Cutervo	Peru	97
Cuzco City	Peru	97
Cyprus	Cyprus	47
Czech Republic	Czech Republic	48
Czechoslovakia	Czech Republic	48
D		
Democratic Republic of The Congo	The Democratic Republic of The Congo	116
Denmark	Denmark	48
Dhaka City	Bangladesh	32
Dhanukha	Nepal	90
Diego Garcia	Diego Garcia	48
Djibouti	Djibouti	49
Dominica	Dominica	49
Dominican Republic	Dominican Republic	49
Dubai	United Arab Emirates	121
Duhok	Iraq	69
Durango	Mexico	84
Dushanbe	Tajikistan	114
Dutch Antilles	Former Netherlands Antilles	55
E		
East Timor	East Timor	50
Easter Island	Chile	42
Ecuador	Ecuador	50
Egypt	Egypt	51
El Faiyum	Egypt	51
El Oro	Ecuador	50
El Salvador	El Salvador	51
Ellice Islands	Kiribati	74
Equatorial Guinea	Equatorial Guinea	52
Erbil	Iraq	69
Eritrea	Eritrea	52
Esmeraldas	Ecuador	50
Estonia	Estonia	53
Eswatini	Eswatini (formerly known as Swaziland)	53
Eswatini (formerly known as Swaziland)	Eswatini (formerly known as Swaziland)	53
Ethiopia	Ethiopia	54
F		
Falkland Islands (Islas Malvinas)	Falkland Islands (Islas Malvinas)	54
Faroe Islands	Faroe Islands	54
Fars	Iran	68

For	See	Page
Federated States of Micronesia	Micronesia (Federated States of)	85
Fiji	Fiji	55
Finland	Finland	55
Former Netherlands Antilles	Former Netherlands Antilles	55
Former Yugoslav Republic of Macedonia	North Macedonia	93
France	France	56
French Guiana	French Guiana	56
French Polynesia	French Polynesia	57
French Southern Territories and Antarctic Lands	French Southern Territories and Antarctic Lands	57
Fuerteventura	Spain	111
Fujian	China	43
G		
Gabon	Gabon	58
Galapagos Islands	Ecuador	50
Gambia (The)	Gambia (The)	58
Gambier Islands (The)	French Polynesia	57
Gangwon-do (N Korea)	North Korea (Democratic Peoples Republic of)	93
Gangwon-do (S Korea)	South Korea (Republic of)	110
Gansu	China	43
Gaza Strip	West Bank, Gaza Strip and Palestine Occupied Territories	126
Gelephu (Gelyephug)	Bhutan	35
Georgia	Georgia	58
Germany	Germany	59
Ghana	Ghana	59
Gibraltar	Gibraltar	59
Gilbert Islands	Kiribati	74
Glorioso Islands	Glorioso Islands	60
Goa	India	66
Golan Heights	Golan Heights	60
Gomera	Spain	111
Gorno-Badakhshan	Tajikistan	114
Gran Canaria	Spain	111
Greece	Greece	60
Greenland	Greenland	61
Grenada	Grenada	61
Grenadines	Saint Vincent and the Grenadines	104
Guadeloupe	Guadeloupe	61
Guam	Guam	62
Guanacaste	Costa Rica	46

For	See	Page
Guangdong	China	43
Guangxi	China	43
Guatemala	Guatemala	62
Guayaramerin	Bolivia	36
Guayas	Ecuador	50
Guernsey	Guernsey	62
Guerrero	Mexico	84
Guimaras	Philippines	98
Guinea	Guinea	63
Guinea-Bissau	Guinea-Bissau	63
Guizhou	China	43
Guyana	Guyana	63
H		
Hainan island	China	43
Haiti	Haiti	64
Hawaii	United States of America	122
Heard and McDonald Islands	Heard and McDonald Islands	64
Heilongjiang	China	43
Herzegovina	Bosnia and Herzegovina	36
Hierro	Spain	111
Himachal Pradesh	India	66
Hiva 'Oa	French Polynesia	57
Holland	Netherlands	90
Honduras	Honduras	64
Hong Kong (S.A.R.)	Hong Kong (S.A.R.)	65
Hormozgan	Iran	68
Howland Island	Howland Island	65
Huahine	French Polynesia	57
Huancavelica	Peru	97
Huang He River	China	43
Hungary	Hungary	65
I		
Ibiza	Spain	111
Iceland	Iceland	66
Ihrir	Algeria	27
Ilam	Iran	68
Illizi	Algeria	27
Iloilo	Philippines	98
Inca Trail	Peru	97
India	India	66

For	See	Page
Indonesia	Indonesia	68
Indonesian Timor	Indonesia	68
Iran	Iran	68
Iraq	Iraq	69
Ireland	Ireland	70
Irian Jaya Island	Indonesia	68
Island of Dominica	Dominica	49
Isle of Man	Isle of Man	70
Israel	Israel	71
Italy	Italy	71
Ivory Coast	Cote D'Ivoire	46
J		
Jaen (Peru)	Peru	97
Jaen (Spain)	Spain	111
Jakarta	Indonesia	68
Jalisco	Mexico	84
Jamaica	Jamaica	71
Jammu and Kashmir	India	66
Jan Mayen	Jan Mayen	72
Japan	Japan	72
Jarvis Island	Jarvis Island	72
Java	Indonesia	68
Jeddah	Saudi Arabia	105
Jersey	Jersey	72
Jilin	China	43
Johnston Atoll	Johnston Atoll	73
Jordan	Jordan	73
Jost Van Dyke	British Virgin Islands	38
Jujuy	Argentina	29
Junin (Colombia)	Colombia	44
Junin (Ecuador)	Ecuador	50
Junin (Peru)	Peru	97
K		
Kalimantan	Indonesia	68
Kalutara	Sri Lanka	112
Kampuchea	Cambodia	40
Kapilvastu	Nepal	90
Kavango River	Namibia	88
Kavre	Nepal	90
Kazakhstan	Kazakhstan	73

For	See	Page
Keeling Islands	Cocos (Keeling) Islands	44
Kenya	Kenya	74
Kerman	Iran	68
Khachmas	Azerbaijan	31
Khatlon	Tajikistan	114
Khuzestan	Iran	68
Kingman Reef	Kingman Reef	74
Kiribati	Kiribati	74
Kirkuk	Iraq	69
Ko Samui	Thailand	115
Kohgiluyeh va Buyer Ahmad	Iran	68
Korea (North)	North Korea (Democratic Peoples Republic of)	93
Korea (South)	South Korea (Republic of)	110
Kosovo	Kosovo	75
Kruger Park	South Africa	109
Kunene River	Namibia	88
Kuwait	Kuwait	75
Kwazulu Natal	South Africa	109
Kyrgyzstan	Kyrgyzstan	75
Kyunggi-do (N Korea)	North Korea (Democratic Peoples Republic of)	93
Kyunggi-do (S Korea)	South Korea (Republic of)	110
L		
La Desirade	Guadeloupe	61
La Libertad	Peru	97
La Paz	Bolivia	36
Lacareja	Bolivia	36
Lake Titikaka	Peru	97
Lambayeque	Peru	97
Lanzarote	Spain	111
Lao Peoples Republic	Laos	76
Laos	Laos	76
Latvia	Latvia	76
Lebanon	Lebanon	76
Leeward Islands (Caribbean)	Leeward Islands (Caribbean)	76
Leeward Islands (Pacific)	French Polynesia	57
Leninabad	Tajikistan	114
Les Saintes	Guadeloupe	61
Lesotho	Lesotho	77
Lesser Antilles	Lesser Antilles	77

For	See	Page
Leyte	Philippines	98
Liberia	Liberia	77
Libya	Libya	78
Liechtenstein	Liechtenstein	78
Limon (Costa Rica)	Costa Rica	46
Limon (Dominican Republic)	Dominican Republic	49
Lithuania	Lithuania	78
Lombok	Indonesia	68
Lorestan	Iran	68
Loreto (Italy)	Italy	71
Loreto (Mexico)	Mexico	84
Loreto (Peru)	Peru	97
Los Rios	Ecuador	50
Luciano Castillo	Peru	97
Luxembourg	Luxembourg	79
M		
Macao	Macau (S.A.R.)	79
Macapa	Brazil	37
Macau (S.A.R.)	Macau (S.A.R.)	79
Macedonia	North Macedonia	93
Macedonia - Greek Macedonia	Greece	60
Machu Picchu	Peru	97
Madagascar	Madagascar	79
Madeira	Portugal	100
Mahotari	Nepal	90
Mai'ao	French Polynesia	57
Majorca	Spain	111
Malawi	Malawi	80
Malaysia	Malaysia	80
Maldives	Maldives	82
Mali	Mali	82
Malta	Malta	82
Manabi	Ecuador	50
Manaus	Brazil	37
Manila	Philippines	98
Maraba	Brazil	37
Maranhao	Brazil	37
Margarita	Venezuela	123
Margarita island	Venezuela	123

For	See	Page
Marie-Galante	Guadeloupe	61
Marquesas Islands (The)	French Polynesia	57
Marshall Islands	Marshall Islands	83
Martinique	Martinique	83
Mary	Turkmenistan	120
Masbate	Philippines	98
Mato Grosso	Brazil	37
Maupiti	French Polynesia	57
Mauritania	Mauritania	83
Mauritius	Mauritius	84
Mayotte	Mayotte	84
Mecca	Saudi Arabia	105
Medina	Saudi Arabia	105
Meheti'a	French Polynesia	57
Mexico	Mexico	84
Michoacán	Mexico	84
Micronesia (Federated States of)	Micronesia (Federated States of)	85
Midway Islands	Midway Islands	86
Minorca	Spain	111
Misiones	Argentina	29
Mo'orea	French Polynesia	57
Moldova	Moldova	86
Monaco	Monaco	86
Mongolia	Mongolia	86
Montenegro	Montenegro	87
Montserrat	Montserrat	87
Morocco	Morocco	87
Morona-Santiago	Ecuador	50
Mozambique	Mozambique	88
Mpumalanga	South Africa	109
Musandam	Oman	94
Myanmar	Myanmar	88
N		
Namibia	Namibia	88
Napo	Ecuador	50
Nauru	Nauru	89
Navassa Island	Navassa Island	90
Nayarit	Mexico	84
Nei Mongol	China	43

For	See	Page
Nepal	Nepal	90
Netherlands	Netherlands	90
Nevis	Saint Kitts and Nevis	103
New Caledonia	New Caledonia	91
New Hebrides	Vanuatu	123
New Zealand	New Zealand	91
Ngamiland	Botswana	37
Nicaragua	Nicaragua	91
Nicobar Islands	India	66
Niger	Niger	92
Nigeria	Nigeria	92
Ninawa	Iraq	69
Ningxia	China	43
Niue	Niue	92
Norfolk Island	Norfolk Island	93
North Batinah	China	43
North Korea (Democratic Peoples Republic of)	North Korea (Democratic Peoples Republic of)	93
North Macedonia	North Macedonia	93
Northern Mariana Islands	Northern Mariana Islands	94
Norway	Norway	94
Nuku Hiva	French Polynesia	57
Nuwara Eliya	Sri Lanka	112
O		
Oaxaca	Mexico	84
Okavango	Botswana	37
Omaheke	Namibia	88
Oman	Oman	94
Otjozondjupa	Namibia	88
P		
Pakistan	Pakistan	95
Palau	Palau	95
Palestine Occupied Territories	West Bank, Gaza Strip and Palestine Occupied Territories	126
Palmyra Atoll	Palmyra Atoll	95
Panama	Panama	96
Pando	Bolivia	36
Papua New Guinea	Papua New Guinea	96
Para	Brazil	37
Paracel Islands	Paracel Islands	96
Paraguay	Paraguay	97
Parsa	Nepal	90

For	See	Page
Pastaza	Ecuador	50
Patagonia (Argentina)	Argentina	29
Pategonia (Chile)	Chile	42
Pattaya	Thailand	115
Peru	Peru	97
Philippines	Philippines	98
Phuket	Thailand	115
Pichincha	Ecuador	50
Pitcairn Islands	Pitcairn Islands	99
Piura	Peru	97
Poland	Poland	99
Polynesia	See specific island(s) visited	
Porto Velho	Brazil	37
Portugal	Portugal	100
Puerto Rico	Puerto Rico	100
Puntarenas	Costa Rica	46
Q		
Qatar	Qatar	100
Qinghai	China	43
Quintana Roo	Mexico	84
R		
Raiatea	French Polynesia	57
Rautahat	Nepal	90
Redonda	Antigua and Barbuda	29
Republic of The Congo	The Republic of The Congo	117
Reunion	Reunion	101
Rhodes	Greece	60
Riberalta	Bolivia	36
Rodriguez Island	Mauritius	84
Romania	Romania	101
Rondonia	Brazil	37
Roraima	Brazil	37
Rumania	Romania	101
Rupendehi	Nepal	90
Rurenabaque	Bolivia	36
Russia	Russia	101
Rwanda	Rwanda	102
S		
Saba	Former Netherlands Antilles	55
Sabah	Malaysia	80
Saint Barthelemy	Saint Barthelemy	102

For	See	Page
Saint Croix	United States of America	122
Saint Helena	Saint Helena	102
Saint John	United States of America	122
Saint Kitts	Saint Kitts and Nevis	103
Saint Kitts and Nevis	Saint Kitts and Nevis	103
Saint Lucia	Saint Lucia	103
Saint Martin	Saint Martin	103
Saint Pierre and Miquelon	Saint Pierre and Miquelon	104
Saint Thomas	United States of America	122
Saint Vincent and the Grenadines	Saint Vincent and the Grenadines	104
Salta	Argentina	29
Samar	Philippines	98
Samchi	Bhutan	35
Samdrupjongkhar	Bhutan	35
Samoa	Samoa	104
Samut	Thailand	115
San Marino	San Marino	104
San Martin	Peru	97
Santa Ana	El Salvador	51
Santa Cruz	Bolivia	36
Santarem	Brazil	37
Santiago	Chile	42
Santiago Island	Cape Verde	41
Sao Tiago Island	Cape Verde	41
Sao Tome and Principe	Sao Tome and Principe	105
Sarawak	Malaysia	80
Sardinia	Italy	71
Sarlahi	Nepal	90
Saudi Arabia	Saudi Arabia	105
Senegal	Senegal	105
Sequijor	Philippines	98
Serbia	Serbia	106
Serbia and Montenegro (Montenegro)	Montenegro	87
Serbia and Montenegro (Serbia)	Serbia	106
Seychelles	Seychelles	106
Shanxi	China	43
Sharjah	United Arab Emirates	121
Shemgang	Bhutan	35

For	See	Page
Sichuan	China	43
Sicily	Italy	71
Side	Turkey	119
Sierra Leone	Sierra Leone	106
Sikkim	India	66
Sinaloa	Mexico	84
Singapore	Singapore	107
Sint Eustatius	Former Netherlands Antilles	55
Sint Maarten	Sint Maarten	107
Sistan-Baluchestan	Iran	68
Slovakia	Slovakia	107
Slovenia	Slovenia	108
Society Islands (The)	French Polynesia	57
Solomon Islands	Solomon Islands	108
Somalia	Somalia	108
Sonora	Mexico	84
South Africa	South Africa	109
South Georgia and the South Sandwich Islands	South Georgia and the South Sandwich Islands	110
South Korea (Republic of)	South Korea (Republic of)	110
South Sudan	South Sudan	110
Spain	Spain	111
Spratly Islands	Spratly Islands	111
Sri Lanka	Sri Lanka	112
Sucumbios	Ecuador	50
Sudan	Sudan	112
Sulaimaniya	Iraq	69
Sumatra	Indonesia	68
Sun City	South Africa	109
Suriname	Suriname	112
Svalbard	Svalbard	113
Swaziland	Eswatini (formerly known as Swaziland)	53
Sweden	Sweden	113
Switzerland	Switzerland	113
Syria	Syria	114
T		
Ta'mim	Iraq	69
Tabasco	Mexico	84
Taha'a	French Polynesia	57
Tahiti	French Polynesia	57

For	See	Page
Taif	Saudi Arabia	105
Taiwan	Taiwan	114
Tajikistan	Tajikistan	114
Taman Negara National Park	Malaysia	80
Tanzania	Tanzania	115
Taounate	Morocco	87
Tarija	Bolivia	36
Taza	Morocco	87
Tenerife	Spain	111
Terai	Nepal	90
Tetiaroa	French Polynesia	57
Thailand	Thailand	115
The Bahamas	Bahamas (The)	32
The Democratic Republic of The Congo	The Democratic Republic of The Congo	116
The Gambia	Gambia (The)	58
The Republic of The Congo	The Republic of The Congo	117
Tiago Island	Cape Verde	41
Tibet	China	43
Timor	East Timor	50
Timor	Indonesia	68
Timor Leste	East Timor	50
Tobago	Trinidad and Tobago	118
Tocantins	Brazil	37
Togo	Togo	117
Tokelau	Tokelau	117
Tonga	Tonga	118
Toronto	Canada	40
Tortola	British Virgin Islands	38
Transjordan	Jordan	73
Transvaal	South Africa	109
Trinidad and Tobago	Trinidad and Tobago	118
Tristan da Cunha	Saint Helena	102
Tromelin Island	Tromelin Island	118
Tuamotu Archipelago (The)	French Polynesia	57
Tugela River	South Africa	109
Tumbes	Peru	97
Tunisia	Tunisia	119
Tupua'i	French Polynesia	57

For	See	Page
Turkey	Turkey	119
Turkmenistan	Turkmenistan	120
Turks and Caicos Islands	Turks and Caicos Islands	120
Tutume	Botswana	37
Tuvalu	Tuvalu	120
Tūpai	French Polynesia	57
U		
U.S. Virgin Islands	United States of America	122
Ucayali	Peru	97
Uganda	Uganda	121
Ukraine	Ukraine	121
Umm al Qaiwain	United Arab Emirates	121
United Arab Emirates	United Arab Emirates	121
United Kingdom	United Kingdom	122
United States of America	United States of America	122
Upper Volta	Burkina Faso	39
Uruguay	Uruguay	123
Uzbekistan	Uzbekistan	123
V		
Vanuatu	Vanuatu	123
Venezuela	Venezuela	123
Vientiane	Laos	76
Vietnam	Vietnam	124
Virgin Gorda	British Virgin Islands	38
W		
Wake Atoll	Wake Atoll	125
Wallis and Futuna	Wallis and Futuna	126
Water Island	United States of America	122
West Bank	West Bank, Gaza Strip and Palestine Occupied Territories	126
West Bank, Gaza Strip and Palestine Occupied Territories	West Bank, Gaza Strip and Palestine Occupied Territories	126
West Indies	See specific island(s) visited	
West Papua	Indonesia	68
West Timor	Indonesia	68
Windward Islands (Caribbean)	Windward Islands (Caribbean)	126
Windward Islands (Pacific)	French Polynesia	57
X		
Xinjiang	China	43
Xizang	China	43
Y		
Yangtze River	China	43
Yellow River	China	43
Yemen	Yemen	127
Yunnan	China	43

For	See	Page
Z		
Zagros mountains	Iran	68
Zaire	The Republic of The Congo	117
Zambia	Zambia	127
Zamora-Chinchipe	Ecuador	50
Zangbo River	China	43
Zanzibar	Tanzania	115
Zimbabwe	Zimbabwe	128
Zululand	South Africa	109

Afghanistan

<i>Malaria</i>	Yes May - November in all areas except the central highlands.
<i>Malaria Risk Category</i>	B
<i>Previous Malaria Risk</i>	Yes all year whole country until Feb 1996 Yes whole country below 2000m (May-Nov) until Sept 2015
<i>Trypanosoma Cruzi Risk</i>	No
<i>Sub Saharan Africa</i>	No
<i>West Nile Virus Risk</i>	No
<i>Tropical Virus Risk</i>	Yes Dengue Virus

Malarial Map



This map is only intended as a guide and is not exact. The map must always be used in conjunction with the malaria advice text. Map downloaded from <http://www.fitfortravel.nhs.uk> on 01 October 2015.

Update Information

This entry was last updated in GDR1 Edition 002 Release 30.

Albania

<i>Malaria</i>	No
<i>Trypanosoma Cruzi Risk</i>	No
<i>Sub Saharan Africa</i>	No

<i>West Nile Virus Risk</i>	Yes Donors who have visited between 1st May and the 30th November must have the WNV Donor Selection Guideline applied.
<i>Tropical Virus Risk</i>	No
<i>Update Information</i>	This entry was last updated in GDRi Edition 002 Release 01

Algeria

<i>Malaria</i>	No
<i>Previous Malaria Risk</i>	Yes All year whole country until February 1996 From March 1996 to May 2019: desert oasis of Iherir (Illizi Department) only
<i>Trypanosoma Cruzi Risk</i>	No
<i>Sub Saharan Africa</i>	No
<i>West Nile Virus Risk</i>	Yes Donors who have visited between 1st May and the 30th November must have the WNV Donor Selection Guideline applied.
<i>Tropical Virus Risk</i>	No
<i>Update Information</i>	This entry was last updated in GDRi Edition 002 Release 32

American Samoa

<i>Malaria</i>	No
<i>Trypanosoma Cruzi Risk</i>	No
<i>Sub Saharan Africa</i>	No
<i>West Nile Virus Risk</i>	No
<i>Tropical Virus Risk</i>	Yes Chikungunya Virus, Dengue and Zika Virus
<i>Update Information</i>	This entry was last updated in GDRi Edition 002 Release 02

Andorra

<i>Malaria</i>	No
<i>Trypanosoma Cruzi Risk</i>	No
<i>Sub Saharan Africa</i>	No
<i>West Nile Virus Risk</i>	No

<i>Tropical Virus Risk</i>	No
<i>Update Information</i>	This entry was last updated in GDR1 Edition 002 Release 01

Angola

<i>Malaria</i>	Yes All year in whole country
<i>Malaria Risk Category</i>	A
<i>Trypanosoma Cruzi Risk</i>	No
<i>Sub Saharan Africa</i>	Yes
<i>West Nile Virus Risk</i>	No
<i>Tropical Virus Risk</i>	Yes Dengue Virus, Yellow Fever and Zika Virus
<i>Update Information</i>	This entry was last updated in GDR1 Edition 002 Release 33

Anguilla

<i>Malaria</i>	No
<i>Trypanosoma Cruzi Risk</i>	No
<i>Sub Saharan Africa</i>	No
<i>West Nile Virus Risk</i>	No
<i>Tropical Virus Risk</i>	Yes Chikungunya Virus and Zika Virus
<i>Update Information</i>	This entry was last updated in GDR1 Edition 002 Release 07

Antarctica

<i>Malaria</i>	No
<i>Trypanosoma Cruzi Risk</i>	No
<i>Sub Saharan Africa</i>	No
<i>West Nile Virus Risk</i>	No
<i>Tropical Virus Risk</i>	No
<i>Update Information</i>	This entry was last updated in GDR1 Edition 002 Release 01

Antigua and Barbuda

<i>Malaria</i>	No
<i>Trypanosoma Cruzi Risk</i>	No
<i>Sub Saharan Africa</i>	No
<i>West Nile Virus Risk</i>	No
<i>Tropical Virus Risk</i>	Yes Chikungunya Virus and Zika Virus
<i>Update Information</i>	This entry was last updated in GDR1 Edition 002 Release 07

Argentina

<i>Malaria</i>	No
<i>Previous Malaria Risk</i>	Yes Until February 1996: All year in rural areas March 1996 to September 2006: October to May, areas below 1200m only October 2006 to May 2019: All year in rural areas of Salta, Jujuy, Misiones and Corrientes
<i>Trypanosoma Cruzi Risk</i>	Yes
<i>Sub Saharan Africa</i>	No
<i>West Nile Virus Risk</i>	No
<i>Tropical Virus Risk</i>	Yes Chikungunya Virus, Dengue Virus, Yellow Fever and Zika Virus
<i>Update Information</i>	This entry was last updated in GDR1 Edition 002 Release 43

Armenia

<i>Malaria</i>	No
<i>Previous Malaria Risk</i>	Yes Jun-Oct Ararat Valley until Sept 2015
<i>Trypanosoma Cruzi Risk</i>	No
<i>Sub Saharan Africa</i>	No
<i>West Nile Virus Risk</i>	No
<i>Tropical Virus Risk</i>	No
<i>Update Information</i>	This entry was last updated in GDR1 Edition 002 Release 05

Aruba

<i>Malaria</i>	No
<i>Trypanosoma Cruzi Risk</i>	No
<i>Sub Saharan Africa</i>	No
<i>West Nile Virus Risk</i>	No
<i>Tropical Virus Risk</i>	Yes Dengue virus and Zika virus
<i>Update Information</i>	This entry was last updated in GDR1 Edition 002 Release 04

Ashmore and Cartier Islands

<i>Malaria</i>	No
<i>Trypanosoma Cruzi Risk</i>	No
<i>Sub Saharan Africa</i>	No
<i>West Nile Virus Risk</i>	No
<i>Tropical Virus Risk</i>	No
<i>Update Information</i>	This entry was last updated in GDR1 Edition 002 Release 01

Australia

<i>Malaria</i>	No
<i>Trypanosoma Cruzi Risk</i>	No
<i>Sub Saharan Africa</i>	No
<i>West Nile Virus Risk</i>	No
<i>Tropical Virus Risk</i>	Yes Dengue Virus in the state of Queensland. (Map data ©2024 Google)



Update Information This entry was last updated in:
GDR1 Edition 002 Release 44

Austria

<i>Malaria</i>	No
<i>Trypanosoma Cruzi Risk</i>	No
<i>Sub Saharan Africa</i>	No
<i>West Nile Virus Risk</i>	Yes Donors who have visited between 1st May and the 30th November must have the WNV Donor Selection Guideline applied.
<i>Tropical Virus Risk</i>	No
<i>Update Information</i>	This entry was last updated in GDR1 Edition 002 Release 01

Azerbaijan

<i>Malaria</i>	No
<i>Trypanosoma Cruzi Risk</i>	No
<i>Sub Saharan Africa</i>	No
<i>West Nile Virus Risk</i>	No
<i>Tropical Virus Risk</i>	No
<i>Update Information</i>	This entry was last updated in GDR1 Edition 002 Release 39.

Bahamas (The)

<i>Malaria</i>	No
<i>Previous Malaria Risk</i>	Yes Great Exuma Island only Jul-Oct 2006 and Sept 2007- Sept 2015
<i>Trypanosoma Cruzi Risk</i>	No
<i>Sub Saharan Africa</i>	No
<i>West Nile Virus Risk</i>	No
<i>Tropical Virus Risk</i>	Yes Chikungunya Virus and Zika Virus
<i>Update Information</i>	This entry was last updated in GDR1 Edition 002 Release 07

Bahrain

<i>Malaria</i>	No
<i>Trypanosoma Cruzi Risk</i>	No
<i>Sub Saharan Africa</i>	No
<i>West Nile Virus Risk</i>	No
<i>Tropical Virus Risk</i>	No
<i>Update Information</i>	This entry was last updated in GDR1 Edition 002 Release 01

Baker Island

<i>Malaria</i>	No
<i>Trypanosoma Cruzi Risk</i>	No
<i>Sub Saharan Africa</i>	No
<i>West Nile Virus Risk</i>	No
<i>Tropical Virus Risk</i>	No
<i>Update Information</i>	This entry was last updated in GDR1 Edition 002 Release 01

Bangladesh

<i>Malaria</i>	Yes All year in the districts south and east of Comilla city.
----------------	---

<i>Malaria Risk Category</i>	C
<i>Previous Malaria Risk</i>	Yes all year whole country until Sept 2015
<i>Trypanosoma Cruzi Risk</i>	No
<i>Sub Saharan Africa</i>	No
<i>West Nile Virus Risk</i>	No
<i>Tropical Virus Risk</i>	Yes Chikungunya Virus, Dengue Virus and Zika Virus

Malarial Map



This map is only intended as a guide and is not exact. The map must always be used in conjunction with the malaria advice text. Map downloaded from <http://www.fitfortravel.nhs.uk> on 01 October 2015.

Update Information This entry was last updated in GDR1 Edition 002 Release 07

Barbados

<i>Malaria</i>	No
<i>Trypanosoma Cruzi Risk</i>	No
<i>Sub Saharan Africa</i>	No
<i>West Nile Virus Risk</i>	No
<i>Tropical Virus Risk</i>	Yes , Dengue and Zika virus
<i>Update Information</i>	This entry was last updated in GDR1 Edition 002 Release 02

Belarus

<i>Malaria</i>	No
<i>Trypanosoma Cruzi Risk</i>	No
<i>Sub Saharan Africa</i>	No
<i>West Nile Virus Risk</i>	No
<i>Tropical Virus Risk</i>	No
<i>Update Information</i>	This entry was last updated in GDRi Edition 002 Release 01

Belgium

<i>Malaria</i>	No
<i>Trypanosoma Cruzi Risk</i>	No
<i>Sub Saharan Africa</i>	No
<i>West Nile Virus Risk</i>	No
<i>Tropical Virus Risk</i>	No
<i>Update Information</i>	This entry was last updated in GDRi Edition 002 Release 01

Belize

<i>Malaria</i>	Malaria risk is low in Stan Creek but negligible elsewhere
<i>Malaria Risk Category</i>	C
<i>Previous Malaria Risk</i>	All year in whole country – Cat A until Dec 2016.
<i>Trypanosoma Cruzi Risk</i>	Yes
<i>Sub Saharan Africa</i>	No
<i>West Nile Virus Risk</i>	No
<i>Tropical Virus Risk</i>	Yes Chikungunya virus and Zika virus
<i>Update Information</i>	This entry was last updated in GDRi Edition 002 Release 09.

Benin

<i>Malaria</i>	Yes All year in whole country
<i>Malaria Risk Category</i>	A
<i>Trypanosoma Cruzi Risk</i>	No
<i>Sub Saharan Africa</i>	Yes
<i>West Nile Virus Risk</i>	No
<i>Tropical Virus Risk</i>	Yes Chikungunya Virus, Yellow Fever and Dengue Virus
<i>Viral Haemorrhagic Fever Risk</i>	Yes
<i>Update Information</i>	This entry was last updated in GDR1 Edition 002 Release 33

Bermuda

<i>Malaria</i>	No
<i>Trypanosoma Cruzi Risk</i>	No
<i>Sub Saharan Africa</i>	No
<i>West Nile Virus Risk</i>	No
<i>Tropical Virus Risk</i>	Yes Chikungunya Virus
<i>Update Information</i>	This entry was last updated in GDR1 Edition 002 Release 01

Bhutan

<i>Malaria</i>	Yes All year in low lying southern districts of Chukha, Dagana, Samtse, Sandrup, Jonkar and Zhemgang. Most northern regions are at high altitude where transmission is very unusual.
<i>Malaria Risk Category</i>	C
<i>Previous Malaria Risk</i>	Yes all year whole country until Feb1996
<i>Trypanosoma Cruzi Risk</i>	No
<i>Sub Saharan Africa</i>	No
<i>West Nile Virus Risk</i>	No
<i>Tropical Virus Risk</i>	Yes Dengue Virus
<i>Update Information</i>	This entry was last updated in GDR1 Edition 002 Release 30.

Bolivia

<i>Malaria</i>	Yes All year in areas below 2500m in the regions of Beni, Pando and Santa Cruz.
<i>Malaria Risk Category</i>	B
<i>Previous Malaria Risk</i>	Yes all year whole country until Feb1996
<i>Trypanosoma Cruzi Risk</i>	Yes
<i>Sub Saharan Africa</i>	No
<i>West Nile Virus Risk</i>	No
<i>Tropical Virus Risk</i>	Yes Chikungunya Virus, Dengue Virus, Yellow Fever and Zika Virus
<i>Update Information</i>	This entry was last updated in GDR1 Edition 002 Release 33

Borneo

<i>Malaria</i>	See <u>Brunei Darussalam</u> and/or <u>Indonesia</u> and/or <u>Malaysia</u>
<i>Malaria Risk Category</i>	B
<i>Trypanosoma Cruzi Risk</i>	No
<i>Sub Saharan Africa</i>	No
<i>West Nile Virus Risk</i>	No
<i>Tropical Virus Risk</i>	Yes Chikungunya, Dengue and Zika virus
<i>Update Information</i>	This entry was last updated in GDR1 Edition 002 Release 09.

Bosnia and Herzegovina

<i>Malaria</i>	No
<i>Trypanosoma Cruzi Risk</i>	No
<i>Sub Saharan Africa</i>	No
<i>West Nile Virus Risk</i>	Yes Donors who have visited between 1st May and the 30th November must have the WNV Donor Selection Guideline applied.
<i>Tropical Virus Risk</i>	No
<i>Update Information</i>	This entry was last updated in GDR1 Edition 002 Release 01

Botswana

<i>Malaria</i>	Yes Risk exists throughout the year but especially from November to June in the northern parts of the country including the regions along the Zimbabwean border, the Zambezi river and all the Game Parks to the north of the Kalahari desert
<i>Malaria Risk Category</i>	B
<i>Previous Malaria Risk</i>	Yes all year whole country until Feb 1996
<i>Trypanosoma Cruzi Risk</i>	No
<i>Sub Saharan Africa</i>	Yes
<i>West Nile Virus Risk</i>	No
<i>Tropical Virus Risk</i>	No
<i>Update Information</i>	This entry was last updated in GDR1 Edition 002 Release 05

Bouvet Island

<i>Malaria</i>	No
<i>Trypanosoma Cruzi Risk</i>	No
<i>Sub Saharan Africa</i>	No
<i>West Nile Virus Risk</i>	No
<i>Tropical Virus Risk</i>	No
<i>Update Information</i>	This entry was last updated in GDR1 Edition 002 Release 01

Brazil

<i>Malaria</i>	Yes All year in the states of: Amazonia (Acre, Amapa, Amazonas, Maranhão (west)), Mato Grosso (north), Para (except Belem City on the coast), Rondônia, Roraima and Tocantins including the urban areas Porto Velho, Boa Vista, Cruzeiro do sol, Rio Branco, Macapa, Manaus, Santarém and Maraba. All year on cruises up the Amazon including the city of Manaus. All year in the jungle and rural areas outside the resort Iguaçu Falls especially towards Paraguay.
<i>Malaria Risk Category</i>	B
<i>Previous Malaria Risk</i>	Yes all year whole country until Feb 1996 Yes all year rural areas below 900m until Sept 2006
<i>Trypanosoma Cruzi Risk</i>	Yes
<i>Sub Saharan Africa</i>	No

West Nile Virus Risk No

Tropical Virus Risk **Yes** Chikungunya Virus, Dengue Virus, Yellow Fever and Zika Virus

Malarial Map



This map is only intended as a guide and is not exact. The map must always be used in conjunction with the malaria advice text. Map downloaded from <http://www.fitfortravel.nhs.uk> on 01 October 2015.

Update Information This entry was last updated in GDR1 Edition 002 Release 33

British Virgin Islands

Malaria No

Trypanosoma Cruzi Risk No

Sub Saharan Africa No

West Nile Virus Risk No

Tropical Virus Risk **Yes** Chikungunya Virus and Zika Virus

Update Information This entry was last updated in GDR1 Edition 002 Release 07

Brunei Darussalam

Malaria **Yes**

<i>Malaria Risk Category</i>	A
<i>Trypanosoma Cruzi Risk</i>	No
<i>Sub Saharan Africa</i>	No
<i>West Nile Virus Risk</i>	No
<i>Tropical Virus Risk</i>	Yes Zika virus
<i>Update Information</i>	This entry was last updated in GDRi Edition 002 Release 07

Bulgaria

<i>Malaria</i>	No
<i>Trypanosoma Cruzi Risk</i>	No
<i>Sub Saharan Africa</i>	No
<i>West Nile Virus Risk</i>	Yes Donors who have visited between 1st May and the 30th November must have the WNV Donor Selection Guideline applied.
<i>Tropical Virus Risk</i>	No
<i>Update Information</i>	This entry was last updated in GDRi Edition 002 Release 01

Burkina Faso

<i>Malaria</i>	Yes All year in whole country
<i>Malaria Risk Category</i>	A
<i>Trypanosoma Cruzi Risk</i>	No
<i>Sub Saharan Africa</i>	Yes
<i>West Nile Virus Risk</i>	No
<i>Tropical Virus Risk</i>	Yes Chikungunya Virus, Dengue Virus, Yellow Fever and Zika Virus
<i>Update Information</i>	This entry was last updated in GDRi Edition 002 Release 42

Burundi

<i>Malaria</i>	Yes All year in whole country
----------------	---

<i>Malaria Risk Category</i>	A
<i>Trypanosoma Cruzi Risk</i>	No
<i>Sub Saharan Africa</i>	Yes
<i>West Nile Virus Risk</i>	No
<i>Tropical Virus Risk</i>	Yes - Chikungunya Virus. Yellow Fever and Zika Virus
<i>Update Information</i>	This entry was last updated in GDR1 Edition 002 Release 33

Cambodia

<i>Malaria</i>	Yes All year, most of the country. Visitors to Phnom Penh, Siem Reap and Angkor Wat only, accept
<i>Malaria Risk Category</i>	B
<i>Previous Malaria Risk</i>	Yes all year whole country until Dec 2011
<i>Trypanosoma Cruzi Risk</i>	No
<i>Sub Saharan Africa</i>	No
<i>West Nile Virus Risk</i>	No
<i>Tropical Virus Risk</i>	Yes Chikungunya Virus, Dengue Virus and Zika Virus
<i>Update Information</i>	This entry was last updated in GDR1 Edition 002 Release 24

Cameroon

<i>Malaria</i>	Yes All year in whole country
<i>Malaria Risk Category</i>	A
<i>Trypanosoma Cruzi Risk</i>	No
<i>Sub Saharan Africa</i>	Yes
<i>West Nile Virus Risk</i>	No
<i>Tropical Virus Risk</i>	Yes Chikungunya Virus, Yellow Fever and Zika Virus
<i>Update Information</i>	This entry was last updated in GDR1 Edition 002 Release 33

Canada

<i>Malaria</i>	No
<i>Trypanosoma Cruzi Risk</i>	No
<i>Sub Saharan Africa</i>	No
<i>West Nile Virus Risk</i>	Yes Donors who have visited between 1st May and the 30th November must have the WNV Donor Selection Guideline applied.
<i>Tropical Virus Risk</i>	No
<i>Update Information</i>	This entry was last updated in GDRi Edition 002 Release 01

Cape Verde

<i>Malaria</i>	Yes
	There is a risk of malaria all year on the islands of Boa Vista and Santiago (Sao Tiago), including the capital city Praia. Visitors to other islands, including the Sal Islands, can be accepted.
<i>Malaria Risk Category</i>	B
<i>Previous Malaria Risk</i>	All year in whole of country until end 1993 From 1994, all year in Boa Vista or Sao Tiago Island
<i>Trypanosoma Cruzi Risk</i>	No
<i>Sub Saharan Africa</i>	No
<i>West Nile Virus Risk</i>	No
<i>Tropical Virus Risk</i>	Yes Chikungunya, Dengue virus and Zika virus
<i>Update Information</i>	This entry was last updated in GDRi Edition 002 Release 17.

Caribbean

See See specific island(s) visited

Cayman Islands

<i>Malaria</i>	No
<i>Trypanosoma Cruzi Risk</i>	No
<i>Sub Saharan Africa</i>	No
<i>West Nile Virus Risk</i>	No

Tropical Virus Risk **Yes** Dengue Virus and Zika Virus

Update Information This entry was last updated in
GDRi Edition 002 Release 43

Central African Republic

Malaria **Yes**
All year in whole country

*Malaria Risk
Category* **A**

*Trypanosoma Cruzi
Risk* No

Sub Saharan Africa **Yes**

West Nile Virus Risk No

Tropical Virus Risk **Yes** – Chikungunya Virus, Yellow Fever and Zika Virus

Update Information This entry was last updated in
GDRi Edition 002 Release 33

Chad

Malaria **Yes**
All year in whole country

*Malaria Risk
Category* **A**

*Trypanosoma Cruzi
Risk* No

Sub Saharan Africa **Yes**

West Nile Virus Risk No

Tropical Virus Risk **Yes**
Chikungunya Virus, Dengue Virus and Yellow Fever

Update Information This entry was last updated in
GDRi Edition 002 Release 42

Chile

Malaria No

*Trypanosoma Cruzi
Risk* **Yes**

Sub Saharan Africa No

West Nile Virus Risk No

Tropical Virus Risk **Yes** - Zika Virus in Easter Island

Update Information This entry was last updated in
GDR1 Edition 002 Release 07

China

<i>Malaria</i>	No
<i>Previous Malaria Risk</i>	Until February 1996: whole country March 1996 to September 2006: whole country below 1500m October 2006 to Jan 2016: Hainan Island, Anhui, Guizhou, Henan, Hubei and Jiangsu provinces Feb 2016 to June 2021: Yunnan province
<i>Trypanosoma Cruzi Risk</i>	No
<i>Sub Saharan Africa</i>	No
<i>West Nile Virus Risk</i>	No
<i>Tropical Virus Risk</i>	Yes Chikungunya Virus and Dengue Virus
<i>Update Information</i>	This entry was last updated in GDR1 Edition 002 Release 33

Christmas Island

<i>Malaria</i>	No
<i>Trypanosoma Cruzi Risk</i>	No
<i>Sub Saharan Africa</i>	No
<i>West Nile Virus Risk</i>	No
<i>Tropical Virus Risk</i>	No
<i>Update Information</i>	This entry was last updated in GDR1 Edition 002 Release 01

Clipperton Island

<i>Malaria</i>	No
<i>Trypanosoma Cruzi Risk</i>	No
<i>Sub Saharan Africa</i>	No
<i>West Nile Virus Risk</i>	No
<i>Tropical Virus Risk</i>	No
<i>Update Information</i>	This entry was last updated in GDR1 Edition 002 Release 01

Cocos (Keeling) Islands

<i>Malaria</i>	No
<i>Trypanosoma Cruzi Risk</i>	No
<i>Sub Saharan Africa</i>	No
<i>West Nile Virus Risk</i>	No
<i>Tropical Virus Risk</i>	No
<i>Update Information</i>	This entry was last updated in GDRi Edition 002 Release 01

Colombia

<i>Malaria</i>	Yes Malaria is present throughout the year. High risk in Choco, Antioquia, Cordoba, Narino and the Amazon (Vichada, Guaviare, Vaupes, Guainia and Amazonas). Low to no risk in all other areas including the cities of Bogota and Cartagena
<i>Malaria Risk Category</i>	B
<i>Previous Malaria Risk</i>	Yes all year whole country until Feb 2015
<i>Trypanosoma Cruzi Risk</i>	Yes
<i>Sub Saharan Africa</i>	No
<i>West Nile Virus Risk</i>	No
<i>Tropical Virus Risk</i>	Yes Chikungunya virus, Dengue virus, Yellow Fever and Zika virus

Malarial Map



This map is only intended as a guide and is not exact. The map must always be used in conjunction with the malaria advice text. Map downloaded from <http://www.fitfortravel.nhs.uk> on 27 June 2017.

Update Information This entry was last updated in GDR1 Edition 002 Release 33

Comoros

<i>Malaria</i>	Yes All year in whole country
<i>Malaria Risk Category</i>	A
<i>Trypanosoma Cruzi Risk</i>	No
<i>Sub Saharan Africa</i>	No
<i>West Nile Virus Risk</i>	No
<i>Tropical Virus Risk</i>	Yes Chikungunya Virus
<i>Update Information</i>	This entry was last updated in GDR1 Edition 002 Release 01

Cook Islands

<i>Malaria</i>	No
<i>Trypanosoma Cruzi</i>	No

<i>Risk</i>	
<i>Sub Saharan Africa</i>	No
<i>West Nile Virus Risk</i>	No
<i>Tropical Virus Risk</i>	Yes Chikungunya Virus, Dengue Virus and Zika Virus
<i>Update Information</i>	This entry was last updated in GDR1 Edition 002 Release 18

Costa Rica

<i>Malaria</i>	Yes All year in whole country
<i>Malaria Risk Category</i>	A
<i>Trypanosoma Cruzi Risk</i>	Yes
<i>Sub Saharan Africa</i>	No
<i>West Nile Virus Risk</i>	No
<i>Tropical Virus Risk</i>	Yes Chikungunya Virus, Dengue Virus and Zika Virus
<i>Update Information</i>	This entry was last updated in GDR1 Edition 002 Release 44

Cote D'Ivoire

<i>Malaria</i>	Yes All year in whole country
<i>Malaria Risk Category</i>	A
<i>Trypanosoma Cruzi Risk</i>	No
<i>Sub Saharan Africa</i>	Yes
<i>West Nile Virus Risk</i>	No
<i>Tropical Virus Risk</i>	Yes - Dengue Virus, Yellow Fever and Zika Virus
<i>Viral Haemorrhagic Fever Risk</i>	Yes
<i>Update Information</i>	This entry was last updated in GDR1 Edition 002 Release 33

Croatia

<i>Malaria</i>	No
<i>Trypanosoma Cruzi</i>	No

<i>Risk</i>	
<i>Sub Saharan Africa</i>	No
<i>West Nile Virus Risk</i>	Yes Donors who have visited between 1st May and the 30th November must have the WNV Donor Selection Guideline applied.
<i>Tropical Virus Risk</i>	No
<i>Update Information</i>	This entry was last updated in GDR1 Edition 002 Release 01

Cuba

<i>Malaria</i>	No
<i>Trypanosoma Cruzi Risk</i>	No
<i>Sub Saharan Africa</i>	No
<i>West Nile Virus Risk</i>	No
<i>Tropical Virus Risk</i>	Yes Dengue Virus and Zika Virus
<i>Update Information</i>	This entry was last updated in GDR1 Edition 002 Release 38

Curacao

<i>Malaria</i>	No
<i>Trypanosoma Cruzi Risk</i>	No
<i>Sub Saharan Africa</i>	No
<i>West Nile Virus Risk</i>	No
<i>Tropical Virus Risk</i>	Yes Zika Virus
<i>Update Information</i>	This entry was last updated in GDR1 Edition 002 Release 02

Cyprus

<i>Malaria</i>	No
<i>Trypanosoma Cruzi Risk</i>	No
<i>Sub Saharan Africa</i>	No
<i>West Nile Virus Risk</i>	

Yes

Donors who have visited between 1st May and the 30th November must have the WNV Donor Selection Guideline applied.

Tropical Virus Risk No

Update Information This entry was last updated in
GDRi Edition 002 Release 18 Issue 002

Czech Republic

Malaria No

Trypanosoma Cruzi Risk No

Sub Saharan Africa No

West Nile Virus Risk No

Tropical Virus Risk No

Update Information This entry was last updated in
GDRi Edition 002 Release 01

Denmark

Malaria No

Trypanosoma Cruzi Risk No

Sub Saharan Africa No

West Nile Virus Risk No

Tropical Virus Risk No

Update Information This entry was last updated in
GDRi Edition 002 Release 01

Diego Garcia

Malaria No

Trypanosoma Cruzi Risk No

Sub Saharan Africa No

West Nile Virus Risk No

Tropical Virus Risk No

Update Information This entry was last updated in
GDR1 Edition 002 Release 01

Djibouti

<i>Malaria</i>	Yes All year in whole country
<i>Malaria Risk Category</i>	A
<i>Trypanosoma Cruzi Risk</i>	No
<i>Sub Saharan Africa</i>	Yes
<i>West Nile Virus Risk</i>	No
<i>Tropical Virus Risk</i>	Yes Dengue
<i>Update Information</i>	This entry was last updated in GDR1 Edition 002 Release 01

Dominica

<i>Malaria</i>	No
<i>Trypanosoma Cruzi Risk</i>	No
<i>Sub Saharan Africa</i>	No
<i>West Nile Virus Risk</i>	No
<i>Tropical Virus Risk</i>	Yes Chikungunya Virus, Dengue and Zika Virus
<i>Update Information</i>	This entry was last updated in GDR1 Edition 002 Release 03

Dominican Republic

<i>Malaria</i>	Yes All year in whole country
<i>Malaria Risk Category</i>	A
<i>Trypanosoma Cruzi Risk</i>	No
<i>Sub Saharan Africa</i>	No
<i>West Nile Virus Risk</i>	No
<i>Tropical Virus Risk</i>	Yes Chikungunya, Dengue and Zika virus

Update Information This entry was last updated in
GDRi Edition 002 Release 02

East Timor

<i>Malaria</i>	Yes All year in whole country
<i>Malaria Risk Category</i>	A
<i>Trypanosoma Cruzi Risk</i>	No
<i>Sub Saharan Africa</i>	No
<i>West Nile Virus Risk</i>	No
<i>Tropical Virus Risk</i>	Yes Chikungunya Virus and Dengue Virus
<i>Update Information</i>	This entry was last updated in GDRi Edition 002 Release 18

Ecuador

<i>Malaria</i>	Yes All year in most of the country. Visitors to Guayaquil, Quito, and other cities in the inter-Andean region and the Galapagos Islands, accept.
<i>Malaria Risk Category</i>	B
<i>Previous Malaria Risk</i>	Yes all year whole country until Feb 2015
<i>Trypanosoma Cruzi Risk</i>	Yes
<i>Sub Saharan Africa</i>	No
<i>West Nile Virus Risk</i>	No
<i>Tropical Virus Risk</i>	Yes Chikungunya virus, Dengue virus, Yellow Fever and Zika virus

Malarial Map



This map is only intended as a guide and is not exact. The map must always be used in conjunction with the malaria advice text. Map downloaded from <http://www.fitfortravel.nhs.uk> on 03 February 2015.

Update Information This entry was last updated in GDR1 Edition 002 Release 33

Egypt

<i>Malaria</i>	No
<i>Previous Malaria Risk</i>	Yes all year whole country until Feb 1996 Yes Jun-Oct in El Faiyum region until May 2012
<i>Trypanosoma Cruzi Risk</i>	No
<i>Sub Saharan Africa</i>	No
<i>West Nile Virus Risk</i>	No
<i>Tropical Virus Risk</i>	Yes Dengue Virus
<i>Update Information</i>	This entry was last updated in GDR1 Edition 002 Release 43

El Salvador

<i>Malaria</i>	No
<i>Previous Malaria Risk</i>	Yes Until September 2006: All year whole country October 2006 to May 2021: All year in Santa Ana Province and the borders with Guatemala and Honduras

<i>Trypanosoma Cruzi Risk</i>	Yes
<i>Sub Saharan Africa</i>	No
<i>West Nile Virus Risk</i>	No
<i>Tropical Virus Risk</i>	Yes Chikungunya, Dengue and Zika virus
<i>Update Information</i>	This entry was last updated in GDRi Edition 002 Release 32

Equatorial Guinea

<i>Malaria</i>	Yes All year in whole country
<i>Malaria Risk Category</i>	A
<i>Trypanosoma Cruzi Risk</i>	No
<i>Sub Saharan Africa</i>	Yes
<i>West Nile Virus Risk</i>	No
<i>Tropical Virus Risk</i>	Yes Chikungunya Virus and Yellow Fever
<i>Viral Haemorrhagic Fever Risk</i>	Yes Marburg Fever outbreak (whole country): February to June 2023
<i>Update Information</i>	This entry was last updated in GDRi Edition 002 Release 43

Eritrea

<i>Malaria</i>	Yes All year in whole country, visitors to Asmara and the central highlands only, accept.
<i>Malaria Risk Category</i>	B
<i>Previous Malaria Risk</i>	Yes all year whole country until Sept 2015
<i>Trypanosoma Cruzi Risk</i>	No
<i>Sub Saharan Africa</i>	Yes
<i>West Nile Virus Risk</i>	No
<i>Tropical Virus Risk</i>	Yes Dengue Virus

Malarial Map



This map is only intended as a guide and is not exact. The map must always be used in conjunction with the malaria advice text. Map downloaded from <http://www.fitfortravel.nhs.uk> on 23 June 2017.

Update Information This entry was last updated in:
GDR1 Edition 002 Release 44

Estonia

<i>Malaria</i>	No
<i>Trypanosoma Cruzi Risk</i>	No
<i>Sub Saharan Africa</i>	No
<i>West Nile Virus Risk</i>	No
<i>Tropical Virus Risk</i>	No
<i>Update Information</i>	This entry was last updated in GDR1 Edition 002 Release 01

Eswatini (formerly known as Swaziland)

<i>Malaria</i>	Yes All year in most of the country. Visitors to airport of Manzine and western half of country only, accept.
<i>Malaria Risk Category</i>	B
<i>Previous Malaria Risk</i>	Yes all year whole country until Dec 2011

<i>Trypanosoma Cruzi Risk</i>	No
<i>Sub Saharan Africa</i>	No
<i>West Nile Virus Risk</i>	No
<i>Tropical Virus Risk</i>	Yes Chikungunya Virus, Dengue Virus and Zika Virus
<i>Update Information</i>	This entry was last updated in GDRi Edition 002 Release 35

Ethiopia

<i>Malaria</i>	Yes All year in whole country. Visitors to city of Addis Ababa only, accept
<i>Malaria Risk Category</i>	B
<i>Previous Malaria Risk</i>	Yes all year whole country until Sept 2006
<i>Trypanosoma Cruzi Risk</i>	No
<i>Sub Saharan Africa</i>	Yes
<i>West Nile Virus Risk</i>	No
<i>Tropical Virus Risk</i>	Yes Chikungunya Virus, Dengue Virus and Yellow Fever
<i>Update Information</i>	This entry was last updated in GDRi Edition 002 Release 33

Falkland Islands (Islas Malvinas)

<i>Malaria</i>	No
<i>Trypanosoma Cruzi Risk</i>	No
<i>Sub Saharan Africa</i>	No
<i>West Nile Virus Risk</i>	No
<i>Tropical Virus Risk</i>	No
<i>Update Information</i>	This entry was last updated in GDRi Edition 002 Release 01

Faroe Islands

<i>Malaria</i>	No
<i>Trypanosoma Cruzi Risk</i>	No
<i>Sub Saharan Africa</i>	No

<i>West Nile Virus Risk</i>	No
<i>Tropical Virus Risk</i>	No
<i>Update Information</i>	This entry was last updated in GDR1 Edition 002 Release 01

Fiji

<i>Malaria</i>	No
<i>Trypanosoma Cruzi Risk</i>	No
<i>Sub Saharan Africa</i>	No
<i>West Nile Virus Risk</i>	No
<i>Tropical Virus Risk</i>	Yes Chikungunya virus, Dengue virus and Zika virus
<i>Update Information</i>	This entry was last updated in GDR1 Edition 002 Release 17.

Finland

<i>Malaria</i>	No
<i>Trypanosoma Cruzi Risk</i>	No
<i>Sub Saharan Africa</i>	No
<i>West Nile Virus Risk</i>	No
<i>Tropical Virus Risk</i>	No
<i>Update Information</i>	This entry was last updated in GDR1 Edition 002 Release 01

Former Netherlands Antilles

<i>Malaria</i>	No
<i>Trypanosoma Cruzi Risk</i>	No
<i>Sub Saharan Africa</i>	No
<i>West Nile Virus Risk</i>	No
<i>Tropical Virus Risk</i>	Yes Chikungunya virus and Zika Virus
<i>Update Information</i>	This entry was last updated in GDR1 Edition 002 Release 03

France

<i>Malaria</i>	No
<i>Trypanosoma Cruzi Risk</i>	No
<i>Sub Saharan Africa</i>	No
<i>West Nile Virus Risk</i>	Yes

Donors who have visited the following departments (regions) of France, between 1st May and the 30th November, must have the WNV Donor Selection Guideline applied: Charente, Charente-Maritime, Gironde, Hautes-Pyrénées, Haute-Garonne, Pyrénées-Orientales, Var, Alpes-Maritimes and Bouches-du-Rhône.

These departments are marked in red or black on the map.

There is no West Nile Virus Risk in Gard.

(Map data ©2023 Google, GeoBasis-DE/BKG (©2009), Inst Geogr Nacional)

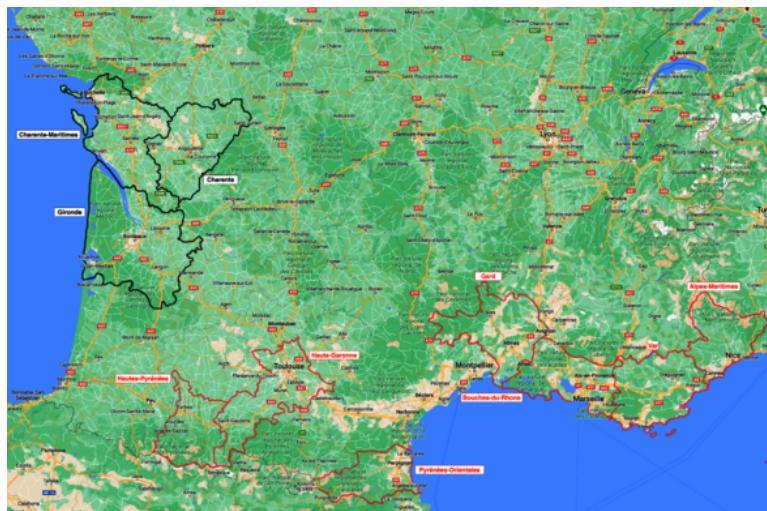
<i>Tropical Virus Risk</i>	Yes Dengue Virus
----------------------------	-------------------------

All year in the departments (regions) of Bouches-du-Rhône, Gard, Hautes-Pyrénées, Haute-Garonne, Pyrénées-Orientales, Var, and Alpes-Maritimes.

These departments are marked in red on the map.

There is no Tropical Virus Risk in Charente, Charente-Maritime or Gironde.

(Map data ©2023 Google, GeoBasis-DE/BKG (©2009), Inst Geogr Nacional)



Update Information

This entry was last updated in GDR1 Edition 002 Release 42

French Guiana

<i>Malaria</i>	Yes All year in the area west of the Mana river and south east of the other main river systems. Visitors to Cayenne, Devils Islands and the central area of the country only, accept.
<i>Malaria Risk Category</i>	B
<i>Previous Malaria Risk</i>	Yes all year whole country until Sept 2015

<i>Trypanosoma Cruzi Risk</i>	Yes
<i>Sub Saharan Africa</i>	No
<i>West Nile Virus Risk</i>	No
<i>Tropical Virus Risk</i>	Yes Chikungunya Virus, Dengue Virus, Yellow Fever and Zika Virus

Malarial Map



This map is only intended as a guide and is not exact. The map must always be used in conjunction with the malaria advice text. Map downloaded from <http://www.fitfortravel.nhs.uk> on 01 October 2015.

Update Information This entry was last updated in:
GDR1 Edition 002 Release 44

French Polynesia

<i>Malaria</i>	No
<i>Trypanosoma Cruzi Risk</i>	No
<i>Sub Saharan Africa</i>	No
<i>West Nile Virus Risk</i>	No
<i>Tropical Virus Risk</i>	Yes Chikungunya Virus, Dengue Virus and Zika Virus
<i>Update Information</i>	This entry was last updated in GDR1 Edition 002 Release 18

French Southern Territories and Antarctic Lands

<i>Malaria</i>	No
<i>Trypanosoma Cruzi Risk</i>	No
<i>Sub Saharan Africa</i>	No
<i>West Nile Virus Risk</i>	No
<i>Tropical Virus Risk</i>	No
<i>Update Information</i>	This entry was last updated in GDR1 Edition 002 Release 01

Gabon

<i>Malaria</i>	Yes All year in whole country
<i>Malaria Risk Category</i>	A
<i>Trypanosoma Cruzi Risk</i>	No
<i>Sub Saharan Africa</i>	Yes
<i>West Nile Virus Risk</i>	No
<i>Tropical Virus Risk</i>	Yes Chikungunya Virus, Dengue Virus, Yellow Fever and Zika Virus
<i>Update Information</i>	This entry was last updated in GDR1 Edition 002 Release 33

Gambia (The)

<i>Malaria</i>	Yes All year in whole country.
<i>Malaria Risk Category</i>	A
<i>Trypanosoma Cruzi Risk</i>	No
<i>Sub Saharan Africa</i>	Yes
<i>West Nile Virus Risk</i>	No
<i>Tropical Virus Risk</i>	Yes Chikungunya Virus, Dengue Virus and Yellow Fever
<i>Update Information</i>	This entry was last updated in GDR1 Edition 002 Release 42

Georgia

Malaria

	Yes June - October in the south-east of the country
<i>Malaria Risk Category</i>	C
<i>Trypanosoma Cruzi Risk</i>	No
<i>Sub Saharan Africa</i>	No
<i>West Nile Virus Risk</i>	No
<i>Tropical Virus Risk</i>	No
<i>Update Information</i>	This entry was last updated in GDR1 Edition 002 Release 09

Germany

<i>Malaria</i>	No
<i>Trypanosoma Cruzi Risk</i>	No
<i>Sub Saharan Africa</i>	No
<i>West Nile Virus Risk</i>	Yes Donors who have visited between 1st May and the 30th November must have the WNV Donor Selection Guideline applied.
<i>Tropical Virus Risk</i>	No
<i>Update Information</i>	This entry was last updated in GDR1 Edition 002 Release 26.

Ghana

<i>Malaria</i>	Yes All year in whole country
<i>Malaria Risk Category</i>	A
<i>Trypanosoma Cruzi Risk</i>	No
<i>Sub Saharan Africa</i>	Yes
<i>West Nile Virus Risk</i>	No
<i>Tropical Virus Risk</i>	Yes Dengue Virus and Yellow Fever
<i>Update Information</i>	This entry was last updated in GDR1 Edition 002 Release 33

Gibraltar

<i>Malaria</i>	No
<i>Trypanosoma Cruzi Risk</i>	No
<i>Sub Saharan Africa</i>	No
<i>West Nile Virus Risk</i>	No
<i>Tropical Virus Risk</i>	No
<i>Update Information</i>	This entry was last updated in GDR1 Edition 002 Release 01

Glorioso Islands

<i>Malaria</i>	No
<i>Trypanosoma Cruzi Risk</i>	No
<i>Sub Saharan Africa</i>	No
<i>West Nile Virus Risk</i>	No
<i>Tropical Virus Risk</i>	No
<i>Update Information</i>	This entry was last updated in GDR1 Edition 002 Release 01

Golan Heights

<i>Malaria</i>	No
<i>Trypanosoma Cruzi Risk</i>	No
<i>Sub Saharan Africa</i>	No
<i>West Nile Virus Risk</i>	No
<i>Tropical Virus Risk</i>	No
<i>Update Information</i>	This entry was last updated in GDR1 Edition 002 Release 01

Greece

<i>Malaria</i>	No
<i>Trypanosoma Cruzi Risk</i>	No

<i>Sub Saharan Africa</i>	No
<i>West Nile Virus Risk</i>	Yes Donors who have visited between 1st May and the 30th November must have the WNV Donor Selection Guideline applied.
<i>Tropical Virus Risk</i>	No
<i>Update Information</i>	This entry was last updated in GDR1 Edition 002 Release 01

Greenland

<i>Malaria</i>	No
<i>Trypanosoma Cruzi Risk</i>	No
<i>Sub Saharan Africa</i>	No
<i>West Nile Virus Risk</i>	No
<i>Tropical Virus Risk</i>	No
<i>Update Information</i>	This entry was last updated in GDR1 Edition 002 Release 01

Grenada

<i>Malaria</i>	No
<i>Trypanosoma Cruzi Risk</i>	No
<i>Sub Saharan Africa</i>	No
<i>West Nile Virus Risk</i>	No
<i>Tropical Virus Risk</i>	Yes Chikungunya Virus, Dengue Virus and Zika Virus
<i>Update Information</i>	This entry was last updated in GDR1 Edition 002 Release 07

Guadeloupe

<i>Malaria</i>	No
<i>Trypanosoma Cruzi Risk</i>	No
<i>Sub Saharan Africa</i>	No
<i>West Nile Virus Risk</i>	No

Tropical Virus Risk **Yes** Chikungunya, Dengue and Zika virus

Update Information This entry was last updated in
GDRi Edition 002 Release 02

Guam

Malaria No

*Trypanosoma Cruzi
Risk* No

Sub Saharan Africa No

West Nile Virus Risk No

Tropical Virus Risk No

Update Information This entry was last updated in
GDRi Edition 002 Release 01

Guatemala

Malaria **Yes**
All year most of the country.
Visitors to Guatemala City, Antigua and Lake Atitlan only, accept.

*Malaria Risk
Category* **B**

Previous Malaria Risk Yes all year whole country until Dec 2011

*Trypanosoma Cruzi
Risk* **Yes**

Sub Saharan Africa No

West Nile Virus Risk No

Tropical Virus Risk **Yes** Chikungunya, Dengue and Zika virus

Update Information This entry was last updated in
GDRi Edition 002 Release 05

Guernsey

Malaria No

*Trypanosoma Cruzi
Risk* No

Sub Saharan Africa No

<i>West Nile Virus Risk</i>	No
<i>Tropical Virus Risk</i>	No
<i>Update Information</i>	This entry was last updated in GDR I Edition 002 Release 01

Guinea

<i>Malaria</i>	Yes All year in whole country
<i>Malaria Risk Category</i>	A
<i>Trypanosoma Cruzi Risk</i>	No
<i>Sub Saharan Africa</i>	Yes
<i>West Nile Virus Risk</i>	No
<i>Tropical Virus Risk</i>	Yes Chikungunya Virus, Dengue Virus and Yellow Fever
<i>Viral Haemorrhagic Fever Risk</i>	Yes Ebola outbreak (whole country): December 2013 – June 2016 Ebola outbreak in N'Zérékoré Prefecture: February – June 2021
<i>Update Information</i>	This entry was last updated in GDR I Edition 002 Release 43

Guinea-Bissau

<i>Malaria</i>	Yes All year in whole country
<i>Malaria Risk Category</i>	A
<i>Trypanosoma Cruzi Risk</i>	No
<i>Sub Saharan Africa</i>	Yes
<i>West Nile Virus Risk</i>	No
<i>Tropical Virus Risk</i>	Yes Yellow Fever and Zika Virus
<i>Update Information</i>	This entry was last updated in: GDR I Edition 002 Release 44

Guyana

<i>Malaria</i>	Yes There is a risk of malaria all year for most of the country, visitors to the coast and Georgetown only, accept.
----------------	---

<i>Malaria Risk Category</i>	B
<i>Previous Malaria Risk</i>	Yes all year whole country until Sept 2015
<i>Trypanosoma Cruzi Risk</i>	Yes
<i>Sub Saharan Africa</i>	No
<i>West Nile Virus Risk</i>	No
<i>Tropical Virus Risk</i>	Yes Chikungunya Virus, Yellow Fever and Zika virus
<i>Update Information</i>	This entry was last updated in GDR1 Edition 002 Release 33

Haiti

<i>Malaria</i>	Yes All year in whole country
<i>Malaria Risk Category</i>	A
<i>Trypanosoma Cruzi Risk</i>	No
<i>Sub Saharan Africa</i>	No
<i>West Nile Virus Risk</i>	No
<i>Tropical Virus Risk</i>	Yes Chikungunya Virus and Zika virus
<i>Update Information</i>	This entry was last updated in GDR1 Edition 002 Release 02

Heard and McDonald Islands

<i>Malaria</i>	No
<i>Trypanosoma Cruzi Risk</i>	No
<i>Sub Saharan Africa</i>	No
<i>West Nile Virus Risk</i>	No
<i>Tropical Virus Risk</i>	No
<i>Update Information</i>	This entry was last updated in GDR1 Edition 002 Release 01

Honduras

<i>Malaria</i>	Yes All year in whole country
<i>Malaria Risk Category</i>	A
<i>Trypanosoma Cruzi Risk</i>	Yes
<i>Sub Saharan Africa</i>	No
<i>West Nile Virus Risk</i>	No
<i>Tropical Virus Risk</i>	Yes Chikungunya, Dengue and Zika virus
<i>Update Information</i>	This entry was last updated in GDR1 Edition 002 Release 02

Hong Kong (S.A.R.)

<i>Malaria</i>	No
<i>Previous Malaria Risk</i>	Yes all year whole country until Feb 1996 Yes all year rural areas until Sept 2006
<i>Trypanosoma Cruzi Risk</i>	No
<i>Sub Saharan Africa</i>	No
<i>West Nile Virus Risk</i>	No
<i>Tropical Virus Risk</i>	No
<i>Update Information</i>	This entry was last updated in GDR1 Edition 002 Release 24

Howland Island

<i>Malaria</i>	No
<i>Trypanosoma Cruzi Risk</i>	No
<i>Sub Saharan Africa</i>	No
<i>West Nile Virus Risk</i>	No
<i>Tropical Virus Risk</i>	No
<i>Update Information</i>	This entry was last updated in GDR1 Edition 002 Release 01

Hungary

<i>Malaria</i>	No
<i>Trypanosoma Cruzi Risk</i>	No
<i>Sub Saharan Africa</i>	No
<i>West Nile Virus Risk</i>	Yes Donors who have visited between 1st May and the 30th November must have the WNV Donor Selection Guideline applied.
<i>Tropical Virus Risk</i>	No
<i>Update Information</i>	This entry was last updated in GDRi Edition 002 Release 01

Iceland

<i>Malaria</i>	No
<i>Trypanosoma Cruzi Risk</i>	No
<i>Sub Saharan Africa</i>	No
<i>West Nile Virus Risk</i>	No
<i>Tropical Virus Risk</i>	No
<i>Update Information</i>	This entry was last updated in GDRi Edition 002 Release 01

India

<i>Malaria</i>	Yes All year in affected areas. Due to the complexity of the distribution the map below should be used: Malaria Map - Current (from January 2021). Visitors to 'Low to no risk' areas (pale pink) only, accept.
<i>Malaria Risk Category</i>	B
<i>Previous Malaria Risk</i>	Yes all year whole country until May 2012 <u>From June 2012 until December 2020 – link to previous malaria map.</u>
<i>Trypanosoma Cruzi Risk</i>	No
<i>Sub Saharan Africa</i>	No
<i>West Nile Virus Risk</i>	No
<i>Tropical Virus Risk</i>	Yes Chikungunya Virus, Dengue Virus and Zika Virus

Malarial Map



Low to no risk
antimalarials not usually advised

Low risk
with additional advice – see text

High risk
antimalarials usually advised

Surrounding country with malaria risk

This map shows malaria risk to be applied from January 2021. The map must always be used in conjunction with the malaria advice text. Map downloaded from <http://www.fitfortravel.nhs.uk> on 27 November 2020.

Update Information This entry was last updated in GDMI Edition 002 Release 31.

India - Previous Malaria Map

Malarial Map



This map shows the malaria risk to be applied from June 2012 to December 2020. Map downloaded from <http://www.fitfortravel.nhs.uk> on 01 October 2015. Adapted with permission. Click the following link to view the latest India Malarial Map <http://www.transfusionguidelines.org.uk/dsg/gdri/guidelines/gc0113-india>

Indonesia

<i>Malaria</i>	Yes All year in most of the country. Visitors to islands of Bali, Java and the city of Jakarta, accept
<i>Malaria Risk Category</i>	B
<i>Trypanosoma Cruzi Risk</i>	No
<i>Sub Saharan Africa</i>	No
<i>West Nile Virus Risk</i>	No
<i>Tropical Virus Risk</i>	Yes Chikungunya Virus, Zika Virus and Dengue
<i>Update Information</i>	This entry was last updated in GDRI Edition 002 Release 07

Iran

<i>Malaria</i>	Yes Malaria risk exists from March to November in rural Iran south of Kerman City
<i>Malaria Risk Category</i>	C
<i>Previous Malaria Risk</i>	Yes all year whole country until Feb 1996
<i>Trypanosoma Cruzi Risk</i>	No
<i>Sub Saharan Africa</i>	No
<i>West Nile Virus Risk</i>	No
<i>Tropical Virus Risk</i>	No
<i>Update Information</i>	This entry was last updated in GDMI Edition 002 Release 24

Iraq

<i>Malaria</i>	Yes Malaria risk May to November in areas north and east of Mosul and Kirkuk Cities along the Turkish and Iranian borders.
<i>Malaria Risk Category</i>	C
<i>Previous Malaria Risk</i>	Yes all year whole country until Feb 1996
<i>Trypanosoma Cruzi Risk</i>	No
<i>Sub Saharan Africa</i>	No
<i>West Nile Virus Risk</i>	No
<i>Tropical Virus Risk</i>	No

Malarial Map



This map is only intended as a guide and is not exact. The map must always be used in conjunction with the malaria advice text. Map downloaded from <http://www.fitfortravel.nhs.uk> on 01 October 2015.

Update Information This entry was last updated in GDR1 Edition 002 Release 05

Ireland

<i>Malaria</i>	No
<i>Trypanosoma Cruzi Risk</i>	No
<i>Sub Saharan Africa</i>	No
<i>West Nile Virus Risk</i>	No
<i>Tropical Virus Risk</i>	No

Update Information This entry was last updated in GDR1 Edition 002 Release 01

Isle of Man

<i>Malaria</i>	No
<i>Trypanosoma Cruzi Risk</i>	No
<i>Sub Saharan Africa</i>	No
<i>West Nile Virus Risk</i>	No
<i>Tropical Virus Risk</i>	No

Update Information

This entry was last updated in
GDR1 Edition 002 Release 01

Israel

<i>Malaria</i>	No
<i>Trypanosoma Cruzi Risk</i>	No
<i>Sub Saharan Africa</i>	No
<i>West Nile Virus Risk</i>	Yes Donors who have visited between 1st May and the 30th November must have the WNV Donor Selection Guideline applied.
<i>Tropical Virus Risk</i>	No
<i>Update Information</i>	This entry was last updated in GDR1 Edition 002 Release 01

Italy

<i>Malaria</i>	No
<i>Trypanosoma Cruzi Risk</i>	No
<i>Sub Saharan Africa</i>	No
<i>West Nile Virus Risk</i>	Yes Donors who have visited between 1st May and 30th November must have the WNV Donor Selection Guideline applied.
<i>Tropical Virus Risk</i>	No
<i>Update Information</i>	This entry was last updated in GDR1 Edition 002 Release 44

Jamaica

<i>Malaria</i>	No
<i>Previous Malaria Risk</i>	Yes all year whole country Dec 2006- May 2012
<i>Trypanosoma Cruzi Risk</i>	No
<i>Sub Saharan Africa</i>	No
<i>West Nile Virus Risk</i>	No
<i>Tropical Virus Risk</i>	Yes Chikungunya Virus, Zika virus and Dengue virus
<i>Update Information</i>	This entry was last updated in GDR1 Edition 002 Release 05

Jan Mayen

<i>Malaria</i>	No
<i>Trypanosoma Cruzi Risk</i>	No
<i>Sub Saharan Africa</i>	No
<i>West Nile Virus Risk</i>	No
<i>Tropical Virus Risk</i>	No
<i>Update Information</i>	This entry was last updated in GDR1 Edition 002 Release 01

Japan

<i>Malaria</i>	No
<i>Trypanosoma Cruzi Risk</i>	No
<i>Sub Saharan Africa</i>	No
<i>West Nile Virus Risk</i>	No
<i>Tropical Virus Risk</i>	No
<i>Update Information</i>	This entry was last updated in GDR1 Edition 002 Release 24

Jarvis Island

<i>Malaria</i>	No
<i>Trypanosoma Cruzi Risk</i>	No
<i>Sub Saharan Africa</i>	No
<i>West Nile Virus Risk</i>	No
<i>Tropical Virus Risk</i>	No
<i>Update Information</i>	This entry was last updated in GDR1 Edition 002 Release 01

Jersey

<i>Malaria</i>	No
<i>Trypanosoma Cruzi</i>	No

<i>Risk</i>	
<i>Sub Saharan Africa</i>	No
<i>West Nile Virus Risk</i>	No
<i>Tropical Virus Risk</i>	No
<i>Update Information</i>	This entry was last updated in GDR1 Edition 002 Release 01

Johnston Atoll

<i>Malaria</i>	No
<i>Trypanosoma Cruzi Risk</i>	No
<i>Sub Saharan Africa</i>	No
<i>West Nile Virus Risk</i>	No
<i>Tropical Virus Risk</i>	No
<i>Update Information</i>	This entry was last updated in GDR1 Edition 002 Release 01

Jordan

<i>Malaria</i>	No
<i>Trypanosoma Cruzi Risk</i>	No
<i>Sub Saharan Africa</i>	No
<i>West Nile Virus Risk</i>	No
<i>Tropical Virus Risk</i>	No
<i>Update Information</i>	This entry was last updated in GDR1 Edition 002 Release 01

Kazakhstan

<i>Malaria</i>	No
<i>Trypanosoma Cruzi Risk</i>	No
<i>Sub Saharan Africa</i>	No
<i>West Nile Virus Risk</i>	No
<i>Tropical Virus Risk</i>	No

Update Information This entry was last updated in
GDR1 Edition 002 Release 01

Kenya

<i>Malaria</i>	Yes All year in most of the country. Visitors to Nairobi, the highlands (above 2500m) of Central, Eastern, Nyanza, Rift Valley and West Provinces only accept.
<i>Malaria Risk Category</i>	B
<i>Trypanosoma Cruzi Risk</i>	No
<i>Sub Saharan Africa</i>	Yes
<i>West Nile Virus Risk</i>	No
<i>Tropical Virus Risk</i>	Yes Chikungunya Virus, Dengue Virus and Yellow Fever
<i>Update Information</i>	This entry was last updated in GDR1 Edition 002 Release 33

Kingman Reef

<i>Malaria</i>	No
<i>Trypanosoma Cruzi Risk</i>	No
<i>Sub Saharan Africa</i>	No
<i>West Nile Virus Risk</i>	No
<i>Tropical Virus Risk</i>	No
<i>Update Information</i>	This entry was last updated in GDR1 Edition 002 Release 01

Kiribati

<i>Malaria</i>	No
<i>Trypanosoma Cruzi Risk</i>	No
<i>Sub Saharan Africa</i>	No
<i>West Nile Virus Risk</i>	No
<i>Tropical Virus Risk</i>	Yes Chikungunya virus and Dengue virus.

Update Information This entry was last updated in
GDRI Edition 002 Release 17.

Kosovo

<i>Malaria</i>	No
<i>Trypanosoma Cruzi Risk</i>	No
<i>Sub Saharan Africa</i>	No
<i>West Nile Virus Risk</i>	Yes Donors who have visited between 1st May and the 30th November must have the WNV Donor Selection Guideline applied.
<i>Tropical Virus Risk</i>	No
<i>Update Information</i>	This entry was last updated in GDRI Edition 002 Release 01

Kuwait

<i>Malaria</i>	No
<i>Trypanosoma Cruzi Risk</i>	No
<i>Sub Saharan Africa</i>	No
<i>West Nile Virus Risk</i>	No
<i>Tropical Virus Risk</i>	No
<i>Update Information</i>	This entry was last updated in GDRI Edition 002 Release 01

Kyrgyzstan

<i>Malaria</i>	No
<i>Previous Malaria Risk</i>	Yes All year whole country until December 2016
<i>Trypanosoma Cruzi Risk</i>	No
<i>Sub Saharan Africa</i>	No
<i>West Nile Virus Risk</i>	No
<i>Tropical Virus Risk</i>	No
<i>Update Information</i>	

This entry was last updated in
GDR1 Edition 002 Release 32

Laos

<i>Malaria</i>	Yes All year in most of the country. Visitors to Vientiane, Bokeo, Houaphanh only, accept
<i>Malaria Risk Category</i>	B
<i>Trypanosoma Cruzi Risk</i>	No
<i>Sub Saharan Africa</i>	No
<i>West Nile Virus Risk</i>	No
<i>Tropical Virus Risk</i>	Yes Chikungunya Virus, Dengue Virus and Zika Virus
<i>Update Information</i>	This entry was last updated in GDR1 Edition 002 Release 24

Latvia

<i>Malaria</i>	No
<i>Trypanosoma Cruzi Risk</i>	No
<i>Sub Saharan Africa</i>	No
<i>West Nile Virus Risk</i>	No
<i>Tropical Virus Risk</i>	No
<i>Update Information</i>	This entry was last updated in GDR1 Edition 002 Release 01

Lebanon

<i>Malaria</i>	No
<i>Trypanosoma Cruzi Risk</i>	No
<i>Sub Saharan Africa</i>	No
<i>West Nile Virus Risk</i>	No
<i>Tropical Virus Risk</i>	No
<i>Update Information</i>	This entry was last updated in GDR1 Edition 002 Release 01

Leeward Islands (Caribbean)

<i>Malaria</i>	No
<i>Trypanosoma Cruzi Risk</i>	No
<i>Sub Saharan Africa</i>	No
<i>West Nile Virus Risk</i>	No
<i>Tropical Virus Risk</i>	Yes - most islands in the Leeward Islands (Caribbean) have a Tropical Virus Risk. Please look under the individual island's name for the appropriate GDRi entry e.g. Montserrat, Guadeloupe, Saint Martin, etc for more detailed information.
<i>Update Information</i>	This entry was last updated in GDRi Edition 002 Release 07

Lesotho

<i>Malaria</i>	No
<i>Trypanosoma Cruzi Risk</i>	No
<i>Sub Saharan Africa</i>	Yes
<i>West Nile Virus Risk</i>	No
<i>Tropical Virus Risk</i>	No
<i>Update Information</i>	This entry was last updated in GDRi Edition 002 Release 01

Lesser Antilles

<i>Malaria</i>	No
<i>Trypanosoma Cruzi Risk</i>	No
<i>Sub Saharan Africa</i>	No
<i>West Nile Virus Risk</i>	No
<i>Tropical Virus Risk</i>	Yes - most islands in the Lesser Antilles have a Tropical Virus Risk. Please look under the individual island's name for the appropriate GDRi entry e.g. Barbados, Grenada etc for more detailed information.
<i>Update Information</i>	This entry was last updated in GDRi Edition 002 Release 07

Liberia

<i>Malaria</i>	Yes All year in whole country
----------------	---

<i>Malaria Risk Category</i>	A
<i>Trypanosoma Cruzi Risk</i>	No
<i>Sub Saharan Africa</i>	Yes
<i>West Nile Virus Risk</i>	No
<i>Tropical Virus Risk</i>	Yes Chikungunya Virus and Yellow Fever
<i>Viral Haemorrhagic Fever Risk</i>	Yes Ebola outbreak (whole country): March 2014 – June 2016
<i>Update Information</i>	This entry was last updated in GDR1 Edition 002 Release 38

Libya

<i>Malaria</i>	No
<i>Previous Malaria Risk</i>	Yes all year south west of country until Feb 1996 Yes (Feb-Aug) south west of country until Sept 2006
<i>Trypanosoma Cruzi Risk</i>	No
<i>Sub Saharan Africa</i>	No
<i>West Nile Virus Risk</i>	No
<i>Tropical Virus Risk</i>	No
<i>Update Information</i>	This entry was last updated in GDR1 Edition 002 Release 05

Liechtenstein

<i>Malaria</i>	No
<i>Trypanosoma Cruzi Risk</i>	No
<i>Sub Saharan Africa</i>	No
<i>West Nile Virus Risk</i>	No
<i>Tropical Virus Risk</i>	No
<i>Update Information</i>	This entry was last updated in GDR1 Edition 002 Release 01

Lithuania

<i>Malaria</i>	No
<i>Trypanosoma Cruzi Risk</i>	No
<i>Sub Saharan Africa</i>	No
<i>West Nile Virus Risk</i>	No
<i>Tropical Virus Risk</i>	No
<i>Update Information</i>	This entry was last updated in GDR1 Edition 002 Release 01

Luxembourg

<i>Malaria</i>	No
<i>Trypanosoma Cruzi Risk</i>	No
<i>Sub Saharan Africa</i>	No
<i>West Nile Virus Risk</i>	No
<i>Tropical Virus Risk</i>	No
<i>Update Information</i>	This entry was last updated in GDR1 Edition 002 Release 01

Macau (S.A.R.)

<i>Malaria</i>	No
<i>Trypanosoma Cruzi Risk</i>	No
<i>Sub Saharan Africa</i>	No
<i>West Nile Virus Risk</i>	No
<i>Tropical Virus Risk</i>	No
<i>Update Information</i>	This entry was last updated in GDR1 Edition 002 Release 24

Madagascar

<i>Malaria</i>	Yes All year in whole country
<i>Malaria Risk Category</i>	A

<i>Trypanosoma Cruzi Risk</i>	No
<i>Sub Saharan Africa</i>	No
<i>West Nile Virus Risk</i>	No
<i>Tropical Virus Risk</i>	Yes Chikungunya Virus
<i>Update Information</i>	This entry was last updated in GDR1 Edition 002 Release 01

Malawi

<i>Malaria</i>	Yes All year in whole country.
<i>Malaria Risk Category</i>	A
<i>Trypanosoma Cruzi Risk</i>	No
<i>Sub Saharan Africa</i>	Yes
<i>West Nile Virus Risk</i>	No
<i>Tropical Virus Risk</i>	Yes Chikungunya Virus
<i>Update Information</i>	This entry was last updated in GDR1 Edition 002 Release 01

Malaysia

<i>Malaria</i>	Yes All year in central Peninsular Malaysia and the Taman Negara National Park and all provinces of Sabah and Sarawak (on the island of Borneo)
<i>Malaria Risk Category</i>	B
<i>Previous Malaria Risk</i>	Yes all year whole country until Feb 1996 Yes all year in rural areas until Sept 2006
<i>Trypanosoma Cruzi Risk</i>	No
<i>Sub Saharan Africa</i>	No
<i>West Nile Virus Risk</i>	No
<i>Tropical Virus Risk</i>	Yes Chikungunya Virus, Dengue Virus and Zika Virus

Malaria Maps



This map is only intended as a guide and is not exact. The map must always be used in conjunction with the malaria advice text. Map downloaded from <http://www.fitfortravel.nhs.uk> on 27 June 2017.



This map is only intended as a guide and is not exact. The map must always be used in conjunction with the malaria advice text. Map downloaded from <http://www.fitfortravel.nhs.uk> on 27 June 2017.



This map is only intended as a guide and is not exact. The map must always be used in conjunction with the malaria advice text. Map downloaded from <http://www.fitfortravel.nhs.uk> on 27 June 2017.

Update Information This entry was last updated in GDR1 Edition 002 Release 24

Maldives

<i>Malaria</i>	No
<i>Previous Malaria Risk</i>	Yes all years whole country Oct 2009
<i>Trypanosoma Cruzi Risk</i>	No
<i>Sub Saharan Africa</i>	No
<i>West Nile Virus Risk</i>	No
<i>Tropical Virus Risk</i>	Yes Chikungunya Virus, Dengue Virus and Zika Virus
<i>Update Information</i>	This entry was last updated in GDR1 Edition 002 Release 18

Mali

<i>Malaria</i>	Yes All year in whole country
<i>Malaria Risk Category</i>	A
<i>Trypanosoma Cruzi Risk</i>	No
<i>Sub Saharan Africa</i>	Yes
<i>West Nile Virus Risk</i>	No
<i>Tropical Virus Risk</i>	Yes Chikungunya Virus, Dengue Virus and Yellow Fever
<i>Viral Haemorrhagic Fever Risk</i>	Yes
<i>Update Information</i>	This entry was last updated in GDR1 Edition 002 Release 42

Malta

<i>Malaria</i>	No
<i>Trypanosoma Cruzi Risk</i>	No
<i>Sub Saharan Africa</i>	No

<i>West Nile Virus Risk</i>	No
<i>Tropical Virus Risk</i>	No
<i>Update Information</i>	This entry was last updated in GDR I Edition 002 Release 01

Marshall Islands

<i>Malaria</i>	No
<i>Trypanosoma Cruzi Risk</i>	No
<i>Sub Saharan Africa</i>	No
<i>West Nile Virus Risk</i>	No
<i>Tropical Virus Risk</i>	Yes Chikungunya Virus, Dengue Virus and Zika Virus
<i>Update Information</i>	This entry was last updated in GDR I Edition 002 Release 30.

Martinique

<i>Malaria</i>	No
<i>Trypanosoma Cruzi Risk</i>	No
<i>Sub Saharan Africa</i>	No
<i>West Nile Virus Risk</i>	No
<i>Tropical Virus Risk</i>	Yes Chikungunya, Dengue and Zika virus
<i>Update Information</i>	This entry was last updated in GDR I Edition 002 Release 02

Mauritania

<i>Malaria</i>	Yes All year in whole country
<i>Malaria Risk Category</i>	A
<i>Trypanosoma Cruzi Risk</i>	No
<i>Sub Saharan Africa</i>	Yes
<i>West Nile Virus Risk</i>	No

Tropical Virus Risk **Yes** Dengue Virus and Yellow Fever

Update Information This entry was last updated in
GDRI Edition 002 Release 33

Mauritius

Malaria No

Previous Malaria Risk Yes all year whole country until Sept 2006
Yes rural areas of Mauritius Island all year until Dec 2011

*Trypanosoma Cruzi
Risk* No

Sub Saharan Africa No

West Nile Virus Risk No

Tropical Virus Risk **Yes** Chikungunya Virus and Dengue

Update Information This entry was last updated in
GDRI Edition 002 Release 05

Mayotte

Malaria **Yes**
All year in whole country

*Malaria Risk
Category* **A**

*Trypanosoma Cruzi
Risk* No

Sub Saharan Africa No

West Nile Virus Risk No

Tropical Virus Risk **Yes** Chikungunya Virus and Dengue

Update Information This entry was last updated in
GDRI Edition 002 Release 01

Mexico

Malaria **Yes**

Malaria risk is present intermittently in some rural areas not normally visited by tourists. These include some areas in the states of Chiapas, Chihuahua, Durango, Nayarit, Quintana Roo and Sinaloa.

There is no risk of malaria in popular tourist destinations including Acapulco, Mexico City, Cancun, Cozumel and the Mayan Riviera.

<i>Malaria Risk Category</i>	C
<i>Previous Malaria Risk</i>	Yes all year in rural areas until Sept 2006 Yes wide spread (except Cancun) until Dec 2011
<i>Trypanosoma Cruzi Risk</i>	Yes
<i>Sub Saharan Africa</i>	No
<i>West Nile Virus Risk</i>	No
<i>Tropical Virus Risk</i>	Yes Chikungunya, Dengue and Zika virus

Malarial Map



This map is only intended as a guide and is not exact. The map must always be used in conjunction with the malaria advice text. Map downloaded from <http://www.fitfortravel.nhs.uk> on 01 October 2015.

<i>Update Information</i>	This entry was last updated in GDR1 Edition 002 Release 07
---------------------------	--

Micronesia (Federated States of)

<i>Malaria</i>	No
<i>Trypanosoma Cruzi Risk</i>	No
<i>Sub Saharan Africa</i>	No
<i>West Nile Virus Risk</i>	No
<i>Tropical Virus Risk</i>	Yes Zika Virus
<i>Update Information</i>	This entry was last updated in GDR1 Edition 002 Release 04

Midway Islands

<i>Malaria</i>	No
<i>Trypanosoma Cruzi Risk</i>	No
<i>Sub Saharan Africa</i>	No
<i>West Nile Virus Risk</i>	No
<i>Tropical Virus Risk</i>	No
<i>Update Information</i>	This entry was last updated in GDR1 Edition 002 Release 01

Moldova

<i>Malaria</i>	No
<i>Trypanosoma Cruzi Risk</i>	No
<i>Sub Saharan Africa</i>	No
<i>West Nile Virus Risk</i>	No
<i>Tropical Virus Risk</i>	No
<i>Update Information</i>	This entry was last updated in GDR1 Edition 002 Release 01

Monaco

<i>Malaria</i>	No
<i>Trypanosoma Cruzi Risk</i>	No
<i>Sub Saharan Africa</i>	No
<i>West Nile Virus Risk</i>	Yes There is also a Tropical Virus risk (Dengue) which should be applied.
<i>Tropical Virus Risk</i>	Yes Dengue Virus
<i>Update Information</i>	This entry was last updated in GDR1 Edition 002 Release 36

Mongolia

<i>Malaria</i>	No
----------------	----

<i>Trypanosoma Cruzi Risk</i>	No
<i>Sub Saharan Africa</i>	No
<i>West Nile Virus Risk</i>	No
<i>Tropical Virus Risk</i>	No
<i>Update Information</i>	This entry was last updated in GDR1 Edition 002 Release 01

Montenegro

<i>Malaria</i>	No
<i>Trypanosoma Cruzi Risk</i>	No
<i>Sub Saharan Africa</i>	No
<i>West Nile Virus Risk</i>	Yes Donors who have visited between 1st May and the 30th November must have the WNV Donor Selection Guideline applied.
<i>Tropical Virus Risk</i>	No
<i>Update Information</i>	This entry was last updated in GDR1 Edition 002 Release 01

Montserrat

<i>Malaria</i>	No
<i>Trypanosoma Cruzi Risk</i>	No
<i>Sub Saharan Africa</i>	No
<i>West Nile Virus Risk</i>	No
<i>Tropical Virus Risk</i>	Yes Chikungunya Virus and Zika Virus
<i>Update Information</i>	This entry was last updated in GDR1 Edition 002 Release 08

Morocco

<i>Malaria</i>	No
<i>Previous Malaria Risk</i>	Yes all year rural areas until Feb 1996 Yes (May-Oct) rural areas until Sept 2006 Yes May-Oct in provinces of Al Hoceima, Taounate, and Taza until Dec 2011

<i>Trypanosoma Cruzi Risk</i>	No
<i>Sub Saharan Africa</i>	No
<i>West Nile Virus Risk</i>	No
<i>Tropical Virus Risk</i>	No
<i>Update Information</i>	This entry was last updated in GDR1 Edition 002 Release 05

Mozambique

<i>Malaria</i>	Yes All year in whole country
<i>Malaria Risk Category</i>	A
<i>Trypanosoma Cruzi Risk</i>	No
<i>Sub Saharan Africa</i>	Yes
<i>West Nile Virus Risk</i>	No
<i>Tropical Virus Risk</i>	Yes Dengue
<i>Update Information</i>	This entry was last updated in GDR1 Edition 002 Release 01

Myanmar

<i>Malaria</i>	Yes All year in whole country.
<i>Malaria Risk Category</i>	A
<i>Trypanosoma Cruzi Risk</i>	No
<i>Sub Saharan Africa</i>	No
<i>West Nile Virus Risk</i>	No
<i>Tropical Virus Risk</i>	Yes Chikungunya Virus and Dengue
<i>Update Information</i>	This entry was last updated in GDR1 Edition 002 Release 24

Namibia

<i>Malaria</i>	Yes All year in the area north of Windhoek except the narrow coastal strip.
<i>Malaria Risk Category</i>	B

Previous Malaria Risk Yes all year whole country until Feb 1996
 Yes all year northern regions until May 2015

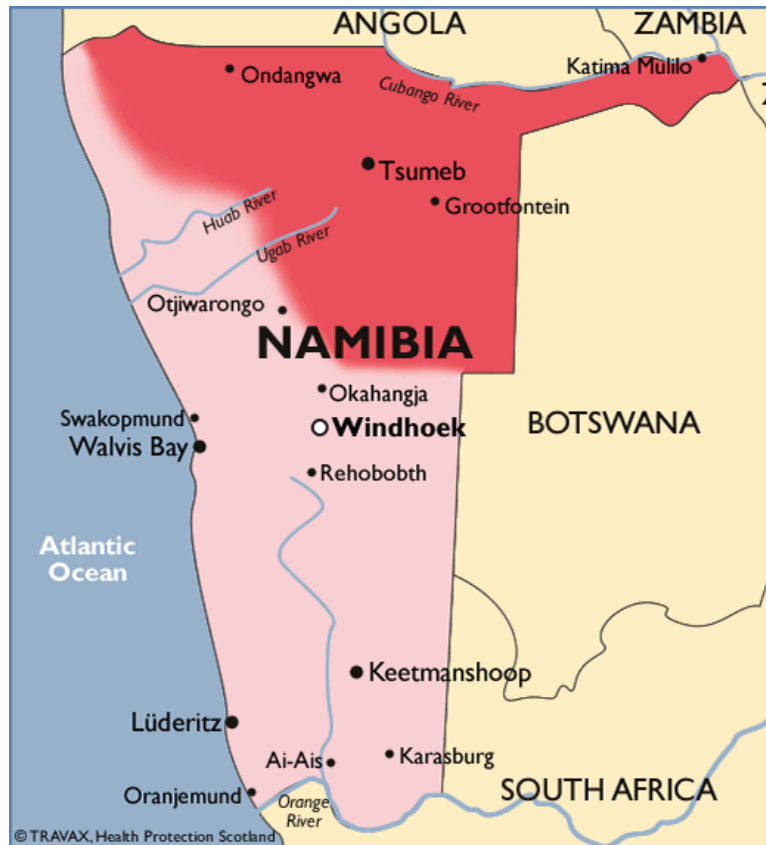
Trypanosoma Cruzi Risk No

Sub Saharan Africa **Yes**

West Nile Virus Risk No

Tropical Virus Risk No

Malaria Map



This map is only intended as a guide and is not exact. The map must always be used in conjunction with the malaria advice text. Map downloaded from <http://www.fitfortravel.nhs.uk> on 08 May 2015.

Update Information This entry was last updated in GDR1 Edition 002 Release 05

Nauru

Malaria No

Trypanosoma Cruzi Risk No

Sub Saharan Africa No

West Nile Virus Risk No

Tropical Virus Risk **Yes** Chikungunya Virus

Update Information This entry was last updated in GDR1 Edition 002 Release 01

Navassa Island

<i>Malaria</i>	No
<i>Trypanosoma Cruzi Risk</i>	No
<i>Sub Saharan Africa</i>	No
<i>West Nile Virus Risk</i>	No
<i>Tropical Virus Risk</i>	No
<i>Update Information</i>	This entry was last updated in GDR1 Edition 002 Release 01

Nepal

<i>Malaria</i>	Yes All year in low lying areas in the South of the country. Donors who have flown to Kathmandu and stayed within the Himalaya area, accept. Donors who have travelled overland from the Indian border and have travelled in the Southern lower plains along the Indian border, treat as malaria risk.
<i>Malaria Risk Category</i>	B
<i>Previous Malaria Risk</i>	Yes all year whole country until Sept 2006
<i>Trypanosoma Cruzi Risk</i>	No
<i>Sub Saharan Africa</i>	No
<i>West Nile Virus Risk</i>	No
<i>Tropical Virus Risk</i>	Yes Dengue Virus
<i>Update Information</i>	This entry was last updated in GDR1 Edition 002 Release 18

Netherlands

<i>Malaria</i>	No
<i>Trypanosoma Cruzi Risk</i>	No
<i>Sub Saharan Africa</i>	No
<i>West Nile Virus Risk</i>	No
<i>Tropical Virus Risk</i>	No

Update Information This entry was last updated in
GDR I Edition 002 Release 33.

New Caledonia

<i>Malaria</i>	No
<i>Trypanosoma Cruzi Risk</i>	No
<i>Sub Saharan Africa</i>	No
<i>West Nile Virus Risk</i>	No
<i>Tropical Virus Risk</i>	Yes Chikungunya virus, Dengue virus and Zika virus
<i>Update Information</i>	This entry was last updated in GDR I Edition 002 Release 17.

New Zealand

<i>Malaria</i>	No
<i>Trypanosoma Cruzi Risk</i>	No
<i>Sub Saharan Africa</i>	No
<i>West Nile Virus Risk</i>	No
<i>Tropical Virus Risk</i>	No
<i>Update Information</i>	This entry was last updated in GDR I Edition 002 Release 01

Nicaragua

<i>Malaria</i>	Yes All year in most of the country. Visitors to Managua only, accept
<i>Malaria Risk Category</i>	B
<i>Trypanosoma Cruzi Risk</i>	Yes
<i>Sub Saharan Africa</i>	No
<i>West Nile Virus Risk</i>	No
<i>Tropical Virus Risk</i>	Yes Chikungunya Virus, Dengue and Zika Virus
<i>Update Information</i>	

This entry was last updated in
GDR1 Edition 002 Release 02

Niger

<i>Malaria</i>	Yes All year in whole country
<i>Malaria Risk Category</i>	A
<i>Trypanosoma Cruzi Risk</i>	No
<i>Sub Saharan Africa</i>	Yes
<i>West Nile Virus Risk</i>	No
<i>Tropical Virus Risk</i>	Yes Dengue Virus and Yellow Fever
<i>Update Information</i>	This entry was last updated in GDR1 Edition 002 Release 33

Nigeria

<i>Malaria</i>	Yes All year in whole country
<i>Malaria Risk Category</i>	A
<i>Trypanosoma Cruzi Risk</i>	No
<i>Sub Saharan Africa</i>	Yes
<i>West Nile Virus Risk</i>	No
<i>Tropical Virus Risk</i>	Yes Chikungunya Virus, Dengue Virus, Yellow Fever and Zika Virus
<i>Viral Haemorrhagic Fever Risk</i>	Yes
<i>Update Information</i>	This entry was last updated in GDR1 Edition 002 Release 43

Niue

<i>Malaria</i>	No
<i>Trypanosoma Cruzi Risk</i>	No
<i>Sub Saharan Africa</i>	No
<i>West Nile Virus Risk</i>	No
<i>Tropical Virus Risk</i>	Yes Chikungunya Virus

Update Information This entry was last updated in
GDRi Edition 002 Release 01

Norfolk Island

<i>Malaria</i>	No
<i>Trypanosoma Cruzi Risk</i>	No
<i>Sub Saharan Africa</i>	No
<i>West Nile Virus Risk</i>	No
<i>Tropical Virus Risk</i>	No
<i>Update Information</i>	This entry was last updated in GDRi Edition 002 Release 01

North Korea (Democratic Peoples Republic of)

<i>Malaria</i>	Yes All year in the de-militarized zone between North and South Korea (Kyunggi-do and Gangwon-do provinces)
<i>Malaria Risk Category</i>	C
<i>Trypanosoma Cruzi Risk</i>	No
<i>Sub Saharan Africa</i>	No
<i>West Nile Virus Risk</i>	No
<i>Tropical Virus Risk</i>	No
<i>Update Information</i>	This entry was last updated in GDRi Edition 002 Release 01

North Macedonia

<i>Malaria</i>	No
<i>Trypanosoma Cruzi Risk</i>	No
<i>Sub Saharan Africa</i>	No
<i>West Nile Virus Risk</i>	Yes Donors who have visited between 1st May and the 30th November must have the WNV Donor Selection Guideline applied.
<i>Tropical Virus Risk</i>	No

Update Information This entry was last updated in
GDRi Edition 002 Release 18

Northern Mariana Islands

<i>Malaria</i>	No
<i>Trypanosoma Cruzi Risk</i>	No
<i>Sub Saharan Africa</i>	No
<i>West Nile Virus Risk</i>	No
<i>Tropical Virus Risk</i>	No
<i>Update Information</i>	This entry was last updated in GDRi Edition 002 Release 01

Norway

<i>Malaria</i>	No
<i>Trypanosoma Cruzi Risk</i>	No
<i>Sub Saharan Africa</i>	No
<i>West Nile Virus Risk</i>	No
<i>Tropical Virus Risk</i>	No
<i>Update Information</i>	This entry was last updated in GDRi Edition 002 Release 01

Oman

<i>Malaria</i>	Yes Risk is restricted to limited foci in remote areas in the north, including Musandam provinces all year. Muscat is normally considered to be malaria free.
<i>Malaria Risk Category</i>	C
<i>Previous Malaria Risk</i>	Yes all year whole country until Sept 2006
<i>Trypanosoma Cruzi Risk</i>	No
<i>Sub Saharan Africa</i>	No
<i>West Nile Virus Risk</i>	No
<i>Tropical Virus Risk</i>	Yes Dengue Virus

Update Information This entry was last updated in:
GDRi Edition 002 Release 44

Pakistan

<i>Malaria</i>	Yes All year in whole country
<i>Malaria Risk Category</i>	A
<i>Trypanosoma Cruzi Risk</i>	No
<i>Sub Saharan Africa</i>	No
<i>West Nile Virus Risk</i>	No
<i>Tropical Virus Risk</i>	Yes Chikungunya Virus and Dengue
<i>Update Information</i>	This entry was last updated in GDRi Edition 002 Release 01

Palau

<i>Malaria</i>	No
<i>Trypanosoma Cruzi Risk</i>	No
<i>Sub Saharan Africa</i>	No
<i>West Nile Virus Risk</i>	No
<i>Tropical Virus Risk</i>	Yes Chikungunya Virus and Zika Virus
<i>Update Information</i>	This entry was last updated in GDRi Edition 002 Release 42

Palmyra Atoll

<i>Malaria</i>	No
<i>Trypanosoma Cruzi Risk</i>	No
<i>Sub Saharan Africa</i>	No
<i>West Nile Virus Risk</i>	No
<i>Tropical Virus Risk</i>	No
<i>Update Information</i>	

This entry was last updated in
GDRi Edition 002 Release 01

Panama

<i>Malaria</i>	Yes All year in most of the country. Travellers who visited the Canal Zone and Panama City exclusively may be accepted.
<i>Malaria Risk Category</i>	B
<i>Previous Malaria Risk</i>	Yes all year whole country until Dec 2011
<i>Trypanosoma Cruzi Risk</i>	Yes
<i>Sub Saharan Africa</i>	No
<i>West Nile Virus Risk</i>	No
<i>Tropical Virus Risk</i>	Yes Chikungunya virus, Dengue virus, Yellow Fever and Zika virus
<i>Update Information</i>	This entry was last updated in GDRi Edition 002 Release 33

Papua New Guinea

<i>Malaria</i>	Yes All year in whole country
<i>Malaria Risk Category</i>	A
<i>Trypanosoma Cruzi Risk</i>	No
<i>Sub Saharan Africa</i>	No
<i>West Nile Virus Risk</i>	No
<i>Tropical Virus Risk</i>	Yes Zika Virus
<i>Update Information</i>	This entry was last updated in GDRi Edition 002 Release 04

Paracel Islands

<i>Malaria</i>	No
<i>Trypanosoma Cruzi Risk</i>	No
<i>Sub Saharan Africa</i>	No

<i>West Nile Virus Risk</i>	No
<i>Tropical Virus Risk</i>	No
<i>Update Information</i>	This entry was last updated in GDRI Edition 002 Release 01

Paraguay

<i>Malaria</i>	No
<i>Previous Malaria Risk</i>	Yes Until February 1996: all year whole country March 1996 to September 2006: October to May in rural areas From October 2006 to June 2018: all year in the Alto Parana and Caaguazú departments
<i>Trypanosoma Cruzi Risk</i>	Yes
<i>Sub Saharan Africa</i>	No
<i>West Nile Virus Risk</i>	No
<i>Tropical Virus Risk</i>	Yes Chikungunya virus, Dengue virus, Yellow Fever and Zika virus
<i>Update Information</i>	This entry was last updated in GDRI Edition 002 Release 33

Peru

<i>Malaria</i>	Yes Malaria is present in the country East of the Andes below 2000m. There is virtually no risk above this altitude in the Andes. No risk to the West of the Andes along the Pacific coast (except in the extreme northern coastal area). Travellers to Lima, the Inca trail routes taken by trekkers to Cuzco City, Machu Picchu, and Lake Titicaca can be accepted.
<i>Malaria Risk Category</i>	B
<i>Previous Malaria Risk</i>	Yes all year whole country until Feb 1996 Yes all year rural areas below 1500m until Sept 2006
<i>Trypanosoma Cruzi Risk</i>	Yes
<i>Sub Saharan Africa</i>	No
<i>West Nile Virus Risk</i>	No
<i>Tropical Virus Risk</i>	Yes Chikungunya Virus, Dengue Virus, Yellow Fever and Zika Virus

Malarial Map



This map is only intended as a guide and is not exact. The map must always be used in conjunction with the malaria advice text. Map downloaded from <http://www.fitfortravel.nhs.uk> on 01 October 2015.

Update Information This entry was last updated in GDR1 Edition 002 Release 33

Philippines

Malaria **Yes**
 All year in affected areas. Due to the complexity of the distribution the map below should be used. Visitors to 'Low to no risk' areas (pale pink) only, accept.

Malaria Risk Category **B**

Previous Malaria Risk Yes all year whole country until Feb 1996

Trypanosoma Cruzi Risk No

Sub Saharan Africa No

West Nile Virus Risk No

Tropical Virus Risk **Yes** Chikungunya Virus, Zika virus and Dengue virus

Malarial Map



This map is only intended as a guide and is not exact. The map must always be used in conjunction with the malaria advice text. Map downloaded from <http://www.fitfortravel.nhs.uk> on 23 June 2017..

Update Information This entry was last updated in GDR1 Edition 002 Release 09

Pitcairn Islands

- Malaria* No
- Trypanosoma Cruzi Risk* No
- Sub Saharan Africa* No
- West Nile Virus Risk* No
- Tropical Virus Risk* No

Update Information This entry was last updated in GDR1 Edition 002 Release 01

Poland

- Malaria* No

<i>Trypanosoma Cruzi Risk</i>	No
<i>Sub Saharan Africa</i>	No
<i>West Nile Virus Risk</i>	No
<i>Tropical Virus Risk</i>	No
<i>Update Information</i>	This entry was last updated in GDR1 Edition 002 Release 01

Polynesia

See See specific island(s) visited

Portugal

<i>Malaria</i>	No
<i>Trypanosoma Cruzi Risk</i>	No
<i>Sub Saharan Africa</i>	No
<i>West Nile Virus Risk</i>	No
<i>Tropical Virus Risk</i>	No
<i>Update Information</i>	This entry was last updated in GDR1 Edition 002 Release 44

Puerto Rico

<i>Malaria</i>	No N.B. there is a Puerto Rico airport in Bolivia.
<i>Trypanosoma Cruzi Risk</i>	No
<i>Sub Saharan Africa</i>	No
<i>West Nile Virus Risk</i>	No
<i>Tropical Virus Risk</i>	Yes Chikungunya, Dengue and Zika virus
<i>Update Information</i>	This entry was last updated in GDR1 Edition 002 Release 02

Qatar

<i>Malaria</i>	No
<i>Trypanosoma Cruzi Risk</i>	No

<i>Sub Saharan Africa</i>	No
<i>West Nile Virus Risk</i>	No
<i>Tropical Virus Risk</i>	No
<i>Update Information</i>	This entry was last updated in GDRi Edition 002 Release 01

Reunion

<i>Malaria</i>	No
<i>Trypanosoma Cruzi Risk</i>	No
<i>Sub Saharan Africa</i>	No
<i>West Nile Virus Risk</i>	No
<i>Tropical Virus Risk</i>	Yes Chikungunya Virus and Dengue
<i>Update Information</i>	This entry was last updated in GDRi Edition 002 Release 01

Romania

<i>Malaria</i>	No
<i>Trypanosoma Cruzi Risk</i>	No
<i>Sub Saharan Africa</i>	No
<i>West Nile Virus Risk</i>	Yes Donors who have visited between 1st May and the 30th November must have the WNV Donor Selection Guideline applied.
<i>Tropical Virus Risk</i>	No
<i>Update Information</i>	This entry was last updated in GDRi Edition 002 Release 01

Russia

<i>Malaria</i>	No
<i>Trypanosoma Cruzi Risk</i>	No
<i>Sub Saharan Africa</i>	No
<i>West Nile Virus Risk</i>	Yes Donors who have visited the following regions of Russia between 1st May and the 30th November must have the WNV Donor Selection Guideline applied. Altayskiy Kray, Adygeya

republic, Lipetskaya, Novosibirskaya, Voronezhskaya, Volgogradskaya, Rostovskaya, Astrakhanskaya, Belgorodskaya, Samarskaya, Saratovskaya, Chelyabinskaya oblasts and the Tatarstan Republic.

These oblasts are also known as the regions of Altai, Astrakhan, Rostov, Volgograd, Lipetsk, Novosibirsk, Voronezh, Belgorod, Samara, Saratov, and Chelyabinsk and which are in the south west of the Russian Federation just north of the Black and Caspian seas.

Tropical Virus Risk

No

Update Information

This entry was last updated in GDRi Edition 002 Release 01

Rwanda

Malaria

Yes

All year in whole country

Malaria Risk Category

A

Trypanosoma Cruzi Risk

No

Sub Saharan Africa

Yes

West Nile Virus Risk

No

Tropical Virus Risk

Yes Dengue Virus

Update Information

This entry was last updated in GDRi Edition 002 Release 32

Saint Barthelemy

Malaria

No

Trypanosoma Cruzi Risk

No

Sub Saharan Africa

No

West Nile Virus Risk

No

Tropical Virus Risk

Yes Chikungunya Virus, Dengue Virus and Zika Virus

Update Information

This entry was last updated in GDRi Edition 002 Release 30.

Saint Helena

Malaria

No

Trypanosoma Cruzi

No

<i>Risk</i>	
<i>Sub Saharan Africa</i>	No
<i>West Nile Virus Risk</i>	No
<i>Tropical Virus Risk</i>	No
<i>Update Information</i>	This entry was last updated in GDR1 Edition 002 Release 01

Saint Kitts and Nevis

<i>Malaria</i>	No
<i>Trypanosoma Cruzi Risk</i>	No
<i>Sub Saharan Africa</i>	No
<i>West Nile Virus Risk</i>	No
<i>Tropical Virus Risk</i>	Yes Chikungunya Virus and Zika Virus
<i>Update Information</i>	This entry was last updated in GDR1 Edition 002 Release 07

Saint Lucia

<i>Malaria</i>	No
<i>Trypanosoma Cruzi Risk</i>	No
<i>Sub Saharan Africa</i>	No
<i>West Nile Virus Risk</i>	No
<i>Tropical Virus Risk</i>	Yes Chikungunya Virus, Zika virus and Dengue virus
<i>Update Information</i>	This entry was last updated in GDR1 Edition 002 Release 04

Saint Martin

<i>Malaria</i>	No
<i>Trypanosoma Cruzi Risk</i>	No
<i>Sub Saharan Africa</i>	No
<i>West Nile Virus Risk</i>	No
<i>Tropical Virus Risk</i>	Yes Chikungunya Virus, Dengue Virus and Zika Virus
<i>Update Information</i>	This entry was last updated in GDR1 Edition 002 Release 18

Saint Pierre and Miquelon

<i>Malaria</i>	No
<i>Trypanosoma Cruzi Risk</i>	No
<i>Sub Saharan Africa</i>	No
<i>West Nile Virus Risk</i>	Yes Donors who have visited between 1st May and the 30th November must have the WNV Donor Selection Guideline applied.
<i>Tropical Virus Risk</i>	No
<i>Update Information</i>	This entry was last updated in GDRi Edition 002 Release 01

Saint Vincent and the Grenadines

<i>Malaria</i>	No
<i>Trypanosoma Cruzi Risk</i>	No
<i>Sub Saharan Africa</i>	No
<i>West Nile Virus Risk</i>	No
<i>Tropical Virus Risk</i>	Yes Chikungunya Virus, Dengue and Zika Virus
<i>Update Information</i>	This entry was last updated in GDRi Edition 002 Release 03

Samoa

<i>Malaria</i>	No
<i>Trypanosoma Cruzi Risk</i>	No
<i>Sub Saharan Africa</i>	No
<i>West Nile Virus Risk</i>	No
<i>Tropical Virus Risk</i>	Yes Chikungunya, Dengue and Zika virus
<i>Update Information</i>	This entry was last updated in GDRi Edition 002 Release 02

San Marino

<i>Malaria</i>	No
----------------	----

<i>Trypanosoma Cruzi Risk</i>	No
<i>Sub Saharan Africa</i>	No
<i>West Nile Virus Risk</i>	No
<i>Tropical Virus Risk</i>	No
<i>Update Information</i>	This entry was last updated in GDR1 Edition 002 Release 01

Sao Tome and Principe

<i>Malaria</i>	Yes All year in whole country
<i>Malaria Risk Category</i>	A
<i>Trypanosoma Cruzi Risk</i>	No
<i>Sub Saharan Africa</i>	No
<i>West Nile Virus Risk</i>	No
<i>Tropical Virus Risk</i>	Yes Dengue Virus
<i>Update Information</i>	This entry was last updated in: GDR1 Edition 002 Release 44

Saudi Arabia

<i>Malaria</i>	Yes Risk in the South and West provinces. No risk in the Eastern, Northern and Central provinces, Jeddah, Mecca, Medina and Taif.
<i>Malaria Risk Category</i>	B
<i>Previous Malaria Risk</i>	Yes all year whole country (except urban Jeddah, Mecca, Medina and Taif) until Sept 2006
<i>Trypanosoma Cruzi Risk</i>	No
<i>Sub Saharan Africa</i>	No
<i>West Nile Virus Risk</i>	No
<i>Tropical Virus Risk</i>	Yes Dengue
<i>Update Information</i>	This entry was last updated in GDR1 Edition 002 Release 05

Senegal

Malaria

	Yes All year in whole country
<i>Malaria Risk Category</i>	A
<i>Trypanosoma Cruzi Risk</i>	No
<i>Sub Saharan Africa</i>	Yes
<i>West Nile Virus Risk</i>	No
<i>Tropical Virus Risk</i>	Yes Chikungunya Virus, Dengue Virus, Yellow Fever and Zika Virus
<i>Viral Haemorrhagic Fever Risk</i>	Yes
<i>Update Information</i>	This entry was last updated in GDR1 Edition 002 Release 33

Serbia

<i>Malaria</i>	No
<i>Trypanosoma Cruzi Risk</i>	No
<i>Sub Saharan Africa</i>	No
<i>West Nile Virus Risk</i>	Yes Donors who have visited between 1st May and the 30th November must have the WNV Donor Selection Guideline applied.
<i>Tropical Virus Risk</i>	No
<i>Update Information</i>	This entry was last updated in GDR1 Edition 002 Release 01

Seychelles

<i>Malaria</i>	No
<i>Trypanosoma Cruzi Risk</i>	No
<i>Sub Saharan Africa</i>	No
<i>West Nile Virus Risk</i>	No
<i>Tropical Virus Risk</i>	Yes Chikungunya Virus and Dengue
<i>Update Information</i>	This entry was last updated in GDR1 Edition 002 Release 07

Sierra Leone

<i>Malaria</i>	Yes All year in whole country
<i>Malaria Risk Category</i>	A
<i>Trypanosoma Cruzi Risk</i>	No
<i>Sub Saharan Africa</i>	Yes
<i>West Nile Virus Risk</i>	No
<i>Tropical Virus Risk</i>	Yes Chikungunya Virus and Yellow Fever
<i>Viral Haemorrhagic Fever Risk</i>	Yes Ebola outbreak (whole country): May 2014 – March 2016
<i>Update Information</i>	This entry was last updated in GDR1 Edition 002 Release 38

Singapore

<i>Malaria</i>	No
<i>Trypanosoma Cruzi Risk</i>	No
<i>Sub Saharan Africa</i>	No
<i>West Nile Virus Risk</i>	No
<i>Tropical Virus Risk</i>	Yes Chikungunya Virus, Zika Virus and Dengue Virus
<i>Update Information</i>	This entry was last updated in GDR1 Edition 002 Release 24

Sint Maarten

<i>Malaria</i>	No
<i>Trypanosoma Cruzi Risk</i>	No
<i>Sub Saharan Africa</i>	No
<i>West Nile Virus Risk</i>	No
<i>Tropical Virus Risk</i>	Yes Chikungunya Virus and Zika Virus
<i>Update Information</i>	This entry was last updated in GDR1 Edition 002 Release 04

Slovakia

<i>Malaria</i>	No
<i>Trypanosoma Cruzi Risk</i>	No

<i>Sub Saharan Africa</i>	No
<i>West Nile Virus Risk</i>	No
<i>Tropical Virus Risk</i>	No
<i>Update Information</i>	This entry was last updated in GDR1 Edition 002 Release 01

Slovenia

<i>Malaria</i>	No
<i>Trypanosoma Cruzi Risk</i>	No
<i>Sub Saharan Africa</i>	No
<i>West Nile Virus Risk</i>	Yes Donors who have visited between 1st May and the 30th November must have the WNV Donor Selection Guideline applied.
<i>Tropical Virus Risk</i>	No
<i>Update Information</i>	This entry was last updated in GDR1 Edition 002 Release 16

Solomon Islands

<i>Malaria</i>	Yes All year in whole country
<i>Malaria Risk Category</i>	A
<i>Trypanosoma Cruzi Risk</i>	No
<i>Sub Saharan Africa</i>	No
<i>West Nile Virus Risk</i>	No
<i>Tropical Virus Risk</i>	Yes Dengue Virus and Zika Virus
<i>Update Information</i>	This entry was last updated in GDR1 Edition 002 Release 18

Somalia

<i>Malaria</i>	Yes All year in whole country
<i>Malaria Risk Category</i>	A
<i>Trypanosoma Cruzi Risk</i>	No
<i>Sub Saharan Africa</i>	Yes

<i>West Nile Virus Risk</i>	No
<i>Tropical Virus Risk</i>	Yes Chikungunya Virus and Dengue Virus
<i>Update Information</i>	This entry was last updated in: GDR1 Edition 002 Release 44

South Africa

<i>Malaria</i>	Yes There is an all year risk in some rural areas in the North East of the country including the Kruger National Park, Limpopo Transfrontier Park, Hans Merensky Nature reserve and Nwanedi National Park.
<i>Malaria Risk Category</i>	B
<i>Previous Malaria Risk</i>	Yes all year whole country until February 1996 Yes all year North East of the country until September 2006
<i>Trypanosoma Cruzi Risk</i>	No
<i>Sub Saharan Africa</i>	Yes
<i>West Nile Virus Risk</i>	No
<i>Tropical Virus Risk</i>	Yes Chikungunya Virus

Malarial Map



<p>Low to no risk antimalarials not usually advised</p> 	<p>High risk antimalarials usually advised</p> 	<p>Surrounding country with malaria risk</p> 
--	---	--

This map is only intended as a guide and is not exact. The map must always be used in conjunction with the malaria advice text. Map downloaded from <http://www.fitfortravel.nhs.uk> on 27 November 2020

<i>Update Information</i>	This entry was last updated in: GDR1 Edition 002 Release 31.
---------------------------	---

South Georgia and the South Sandwich Islands

<i>Malaria</i>	No
<i>Trypanosoma Cruzi Risk</i>	No
<i>Sub Saharan Africa</i>	No
<i>West Nile Virus Risk</i>	No
<i>Tropical Virus Risk</i>	No
<i>Update Information</i>	This entry was last updated in GDR1 Edition 002 Release 01

South Korea (Republic of)

<i>Malaria</i>	Yes All year in the de-militarized zone between North and South Korea (Kyunggi-do and Gangwon-do provinces). No risk in the main tourist destinations including Seoul.
<i>Malaria Risk Category</i>	C
<i>Trypanosoma Cruzi Risk</i>	No
<i>Sub Saharan Africa</i>	No
<i>West Nile Virus Risk</i>	No
<i>Tropical Virus Risk</i>	No
<i>Update Information</i>	This entry was last updated in GDR1 Edition 002 Release 24

South Sudan

<i>Malaria</i>	Yes All year in whole country
<i>Malaria Risk Category</i>	A
<i>Trypanosoma Cruzi Risk</i>	No
<i>Sub Saharan Africa</i>	Yes
<i>West Nile Virus Risk</i>	No
<i>Tropical Virus Risk</i>	Yes Chikungunya Virus and Yellow Fever
<i>Update Information</i>	

This entry was last updated in
GDR1 Edition 002 Release 33

Spain

<i>Malaria</i>	No
<i>Trypanosoma Cruzi Risk</i>	No
<i>Sub Saharan Africa</i>	No
<i>West Nile Virus Risk</i>	Yes

Donors who have visited the regions of Andalusia and Extremadura between 1st May and the 30th November must have the WNV Donor Selection Guideline applied.

These areas are marked in black on the map.

Andalusia is an Autonomous Community(region) in the south of Spain. It includes the cities of Seville, Malaga, Cordoba and Granada.

Extremadura is an Autonomous Community (region) comprised of the provinces of Cáceres and Badajoz. It includes the cities of Mérida and Badajoz.

(Map data ©2023 Inst. Geogr. Nacional, Google)

<i>Tropical Virus Risk</i>	No
----------------------------	----



Update Information

This entry was last updated in
GDR1 Edition 002 Release 41

Spratly Islands

<i>Malaria</i>	No
<i>Trypanosoma Cruzi Risk</i>	No
<i>Sub Saharan Africa</i>	No
<i>West Nile Virus Risk</i>	No

<i>Tropical Virus Risk</i>	No
<i>Update Information</i>	This entry was last updated in GDRi Edition 002 Release 01

Sri Lanka

<i>Malaria</i>	No
<i>Previous Malaria Risk</i>	Yes all year whole country until Dec 2011 Yes all year northern half of country Dec 2011– Feb 2015
<i>Trypanosoma Cruzi Risk</i>	No
<i>Sub Saharan Africa</i>	No
<i>West Nile Virus Risk</i>	No
<i>Tropical Virus Risk</i>	Yes Chikungunya Virus and Dengue
<i>Update Information</i>	This entry was last updated in GDRi Edition 002 Release 09

Sudan

<i>Malaria</i>	Yes All year in whole country
<i>Malaria Risk Category</i>	A
<i>Trypanosoma Cruzi Risk</i>	No
<i>Sub Saharan Africa</i>	Yes
<i>West Nile Virus Risk</i>	No
<i>Tropical Virus Risk</i>	Yes Chikungunya Virus, Dengue Virus and Yellow Fever
<i>Viral Haemorrhagic Fever Risk</i>	Yes
<i>Update Information</i>	This entry was last updated in GDRi Edition 002 Release 33

Suriname

<i>Malaria</i>	Yes All year in most of the country. Visitors to the seven coastal districts and savannah areas and Paramaribo City only, accept.
<i>Malaria Risk Category</i>	B
<i>Previous Malaria Risk</i>	Yes all year whole country until Dec 2011

<i>Trypanosoma Cruzi Risk</i>	Yes
<i>Sub Saharan Africa</i>	No
<i>West Nile Virus Risk</i>	No
<i>Tropical Virus Risk</i>	Yes Chikungunya Virus, Yellow Fever and Zika virus
<i>Update Information</i>	This entry was last updated in GDR1 Edition 002 Release 33

Svalbard

<i>Malaria</i>	No
<i>Trypanosoma Cruzi Risk</i>	No
<i>Sub Saharan Africa</i>	No
<i>West Nile Virus Risk</i>	No
<i>Tropical Virus Risk</i>	No
<i>Update Information</i>	This entry was last updated in GDR1 Edition 002 Release 01

Sweden

<i>Malaria</i>	No
<i>Trypanosoma Cruzi Risk</i>	No
<i>Sub Saharan Africa</i>	No
<i>West Nile Virus Risk</i>	No
<i>Tropical Virus Risk</i>	No
<i>Update Information</i>	This entry was last updated in GDR1 Edition 002 Release 01

Switzerland

<i>Malaria</i>	No
<i>Trypanosoma Cruzi Risk</i>	No
<i>Sub Saharan Africa</i>	No
<i>West Nile Virus Risk</i>	No

<i>Tropical Virus Risk</i>	No
<i>Update Information</i>	This entry was last updated in GDR1 Edition 002 Release 01

Syria

<i>Malaria</i>	Yes Must be considered to be all year in whole country in view of current situation.
<i>Malaria Risk Category</i>	A
<i>Previous Malaria Risk</i>	Yes all year whole country until Feb 1996 Yes May – Oct along northern border with Turkey and Northern part of country until May 2012
<i>Trypanosoma Cruzi Risk</i>	No
<i>Sub Saharan Africa</i>	No
<i>West Nile Virus Risk</i>	No
<i>Tropical Virus Risk</i>	No
<i>Update Information</i>	This entry was last updated in GDR1 Edition 002 Release 05

Taiwan

<i>Malaria</i>	No
<i>Trypanosoma Cruzi Risk</i>	No
<i>Sub Saharan Africa</i>	No
<i>West Nile Virus Risk</i>	No
<i>Tropical Virus Risk</i>	Yes Dengue
<i>Update Information</i>	This entry was last updated in GDR1 Edition 002 Release 24

Tajikistan

<i>Malaria</i>	No
<i>Trypanosoma Cruzi Risk</i>	No

<i>Sub Saharan Africa</i>	No
<i>West Nile Virus Risk</i>	No
<i>Tropical Virus Risk</i>	No
<i>Update Information</i>	This entry was last updated in GDR I Edition 002 Release 39.

Tanzania

<i>Malaria</i>	Yes All year in whole country.
<i>Malaria Risk Category</i>	A
<i>Trypanosoma Cruzi Risk</i>	No
<i>Sub Saharan Africa</i>	Yes
<i>West Nile Virus Risk</i>	No
<i>Tropical Virus Risk</i>	Yes Chikungunya Virus and Dengue Virus
<i>Viral Haemorrhagic Fever Risk</i>	Yes Marburg Fever outbreak in Kagera Region: February to June 2023
<i>Update Information</i>	This entry was last updated in: GDR I Edition 002 Release 44

Thailand

<i>Malaria</i>	Yes All year in areas along the borders and in inland areas of Surat Thani province – refer to the map. From October 2021, there has been an outbreak of malaria in the Ranong, Songkhla and Trat provinces, including the island of Ko Chang. A risk should also be applied to these areas. (Note: an updated map is not available, therefore these areas are not shown in red on the map below). Visitors to all other areas including the cities of Bangkok, Chiang Mai, Chiang Rai, Pattaya, Phuket, the island of Ko Samui and the River Quai bridge area, accept
<i>Malaria Risk Category</i>	B
<i>Previous Malaria Risk</i>	Yes all year whole country until May 2012
<i>Trypanosoma Cruzi Risk</i>	No
<i>Sub Saharan Africa</i>	No
<i>West Nile Virus Risk</i>	No
<i>Tropical Virus Risk</i>	Yes Chikungunya Virus, Dengue Virus and Zika Virus

Malarial Map



This map is only intended as a guide and is not exact. The map must always be used in conjunction with the malaria advice text. Map downloaded from <http://www.fitfortravel.nhs.uk> on 23 June 2017.

Update Information This entry was last updated in GDR1 Edition 002 Release 34.

The Democratic Republic of The Congo

<i>Malaria</i>	Yes All year in the whole country.
<i>Malaria Risk Category</i>	A
<i>Trypanosoma Cruzi Risk</i>	No
<i>Sub Saharan Africa</i>	Yes
<i>West Nile Virus Risk</i>	No

<i>Tropical Virus Risk</i>	Yes Chikungunya Virus and Yellow Fever
<i>Viral Haemorrhagic Fever Risk</i>	Yes Ebola outbreaks: Equateur province, August – November 2014 Bas Uélé province, May – July 2017 Equateur, South Kivu and Ituri provinces, May 2018 – July 2022 North Kivu province, August 2018 – September 2022
<i>Update Information</i>	This entry was last updated in GDRI Edition 002 Release 38

The Republic of The Congo

<i>Malaria</i>	Yes All year in whole country
<i>Malaria Risk Category</i>	A
<i>Trypanosoma Cruzi Risk</i>	No
<i>Sub Saharan Africa</i>	Yes
<i>West Nile Virus Risk</i>	No
<i>Tropical Virus Risk</i>	Yes Chikungunya Virus and Yellow Fever
<i>Viral Haemorrhagic Fever Risk</i>	Yes
<i>Update Information</i>	This entry was last updated in GDRI Edition 002 Release 33

Togo

<i>Malaria</i>	Yes All year in whole country
<i>Malaria Risk Category</i>	A
<i>Trypanosoma Cruzi Risk</i>	No
<i>Sub Saharan Africa</i>	Yes
<i>West Nile Virus Risk</i>	No
<i>Tropical Virus Risk</i>	Yes Dengue Virus and Yellow Fever
<i>Viral Haemorrhagic Fever Risk</i>	Yes
<i>Update Information</i>	This entry was last updated in GDRI Edition 002 Release 33

Tokelau

<i>Malaria</i>	No
<i>Trypanosoma Cruzi Risk</i>	No
<i>Sub Saharan Africa</i>	No
<i>West Nile Virus Risk</i>	No
<i>Tropical Virus Risk</i>	Yes Chikungunya Virus
<i>Update Information</i>	This entry was last updated in GDR1 Edition 002 Release 01

Tonga

<i>Malaria</i>	No
<i>Trypanosoma Cruzi Risk</i>	No
<i>Sub Saharan Africa</i>	No
<i>West Nile Virus Risk</i>	No
<i>Tropical Virus Risk</i>	Yes Chikungunya virus, Dengue virus and Zika virus
<i>Update Information</i>	This entry was last updated in GDR1 Edition 002 Release 17.

Trinidad and Tobago

<i>Malaria</i>	No
<i>Trypanosoma Cruzi Risk</i>	No
<i>Sub Saharan Africa</i>	No
<i>West Nile Virus Risk</i>	No
<i>Tropical Virus Risk</i>	Yes Dengue virus, Yellow Fever and Zika Virus
<i>Update Information</i>	This entry was last updated in GDR1 Edition 002 Release 33

Tromelin Island

<i>Malaria</i>	No
<i>Trypanosoma Cruzi Risk</i>	No
<i>Sub Saharan Africa</i>	No
<i>West Nile Virus Risk</i>	No
<i>Tropical Virus Risk</i>	No

Update Information This entry was last updated in
GDRi Edition 002 Release 01

Tunisia

<i>Malaria</i>	No
<i>Trypanosoma Cruzi Risk</i>	No
<i>Sub Saharan Africa</i>	No
<i>West Nile Virus Risk</i>	Yes Donors who have visited between 1st May and the 30th November must have the WNV Donor Selection Guideline applied.
<i>Tropical Virus Risk</i>	No
<i>Update Information</i>	This entry was last updated in GDRi Edition 002 Release 01

Turkey

<i>Malaria</i>	Yes Malaria occurs from May to October, mainly in the south-eastern part of the country, the Syria and Iraq borders and in the Cukurova Plain east of Adana. There is no malaria risk in the main tourist areas in the west and south-west of the country. Visitors to the popular tourist resorts served by the airports in Bodrum, Antalya and Dalaman can be accepted.
<i>Malaria Risk Category</i>	B
<i>Previous Malaria Risk</i>	Yes all year whole country until Feb 1996
<i>Trypanosoma Cruzi Risk</i>	No
<i>Sub Saharan Africa</i>	No
<i>West Nile Virus Risk</i>	Yes Donors who have visited between 1st May and the 30th November must have the WNV Donor Selection Guideline applied.
<i>Tropical Virus Risk</i>	No

Malarial Map



This map is only intended as a guide and is not exact. The map must always be used in conjunction with the malaria advice text. Map downloaded from <http://www.fitfortravel.nhs.uk> on 03 February 2015.

Update Information This entry was last updated in GDR1 Edition 002 Release 05

Turkmenistan

<i>Malaria</i>	No
<i>Previous Malaria Risk</i>	Yes Jun – Oct in South Eastern border regions until Sept 2015
<i>Trypanosoma Cruzi Risk</i>	No
<i>Sub Saharan Africa</i>	No
<i>West Nile Virus Risk</i>	No
<i>Tropical Virus Risk</i>	No
<i>Update Information</i>	This entry was last updated in GDR1 Edition 002 Release 05

Turks and Caicos Islands

<i>Malaria</i>	No
<i>Trypanosoma Cruzi Risk</i>	No
<i>Sub Saharan Africa</i>	No
<i>West Nile Virus Risk</i>	No
<i>Tropical Virus Risk</i>	Yes Chikungunya Virus, Dengue Virus and Zika Virus
<i>Update Information</i>	This entry was last updated in GDR1 Edition 002 Release 43

Tuvalu

Malaria No

<i>Trypanosoma Cruzi Risk</i>	No
<i>Sub Saharan Africa</i>	No
<i>West Nile Virus Risk</i>	No
<i>Tropical Virus Risk</i>	No
<i>Update Information</i>	This entry was last updated in GDR1 Edition 002 Release 01

Uganda

<i>Malaria</i>	Yes All year in whole country
<i>Malaria Risk Category</i>	A
<i>Trypanosoma Cruzi Risk</i>	No
<i>Sub Saharan Africa</i>	Yes
<i>West Nile Virus Risk</i>	No
<i>Tropical Virus Risk</i>	Yes Chikungunya Virus, Yellow Fever and Zika Virus
<i>Viral Haemorrhagic Fever Risk</i>	Yes Ebola outbreak from September 2022 to January 2023, applies to the following regions: Mubende and Kassanda Districts in the Central Region, and Bunyangabu, Kagadi and Kyegegwa Districts in the Western Region.
<i>Update Information</i>	This entry was last updated in GDR1 Edition 002 Release 38

Ukraine

<i>Malaria</i>	No
<i>Trypanosoma Cruzi Risk</i>	No
<i>Sub Saharan Africa</i>	No
<i>West Nile Virus Risk</i>	No
<i>Tropical Virus Risk</i>	No
<i>Update Information</i>	This entry was last updated in GDR1 Edition 002 Release 01

United Arab Emirates

<i>Malaria</i>	No
----------------	----

<i>Previous Malaria Risk</i>	Yes all year whole country until Feb 1996 Yes in East of country until Dec 2011 with no risk in the cities of Abu Dhabi, Dubai, Sharjah, Ajman and Umm al Qaiwain
<i>Trypanosoma Cruzi Risk</i>	No
<i>Sub Saharan Africa</i>	No
<i>West Nile Virus Risk</i>	No
<i>Tropical Virus Risk</i>	No
<i>Update Information</i>	This entry was last updated in GDRi Edition 002 Release 16

United Kingdom

<i>Malaria</i>	No
<i>Trypanosoma Cruzi Risk</i>	No
<i>Sub Saharan Africa</i>	No
<i>West Nile Virus Risk</i>	No
<i>Tropical Virus Risk</i>	No
<i>Update Information</i>	This entry was last updated in GDRi Edition 002 Release 01

United States of America

<i>Malaria</i>	No
<i>Trypanosoma Cruzi Risk</i>	No
<i>Sub Saharan Africa</i>	No
<i>West Nile Virus Risk</i>	Yes in all regions of the USA except Hawaii, Alaska and US Virgin Islands (St Choix, St John and St Thomas in the Leeward Islands) Donors who have visited between 1st May and the 30th November must have the WNV Donor Selection Guideline applied.
<i>Tropical Virus Risk</i>	Yes Chikungunya Virus and Zika virus in the US Virgin Islands (St Choix, St John and St Thomas in the Leeward Islands). Dengue virus in Hawaii. Donors who have visited these islands must have the Tropical Virus Donor Selection Guideline applied.
<i>Update Information</i>	This entry was last updated in GDRi Edition 002 Release 18

Uruguay

<i>Malaria</i>	No
<i>Trypanosoma Cruzi Risk</i>	Yes
<i>Sub Saharan Africa</i>	No
<i>West Nile Virus Risk</i>	No
<i>Tropical Virus Risk</i>	Yes Dengue Virus
<i>Update Information</i>	This entry was last updated in GDRi Edition 002 Release 07

Uzbekistan

<i>Malaria</i>	No
<i>Trypanosoma Cruzi Risk</i>	No
<i>Sub Saharan Africa</i>	No
<i>West Nile Virus Risk</i>	No
<i>Tropical Virus Risk</i>	No
<i>Update Information</i>	This entry was last updated in GDRi Edition 002 Release 01

Vanuatu

<i>Malaria</i>	Yes All year in whole country
<i>Malaria Risk Category</i>	A
<i>Trypanosoma Cruzi Risk</i>	No
<i>Sub Saharan Africa</i>	No
<i>West Nile Virus Risk</i>	No
<i>Tropical Virus Risk</i>	Yes Dengue virus and Zika virus
<i>Update Information</i>	This entry was last updated in GDRi Edition 002 Release 17.

Venezuela

<i>Malaria</i>	Yes All year in whole country.
<i>Malaria Risk Category</i>	A
<i>Trypanosoma Cruzi Risk</i>	Yes
<i>Sub Saharan Africa</i>	No
<i>West Nile Virus Risk</i>	No
<i>Tropical Virus Risk</i>	Yes Chikungunya Virus, Dengue Virus, Yellow Fever and Zika Virus
<i>Update Information</i>	This entry was last updated in GDRi Edition 002 Release 33

Vietnam

<i>Malaria</i>	Yes All year in whole country. Visitors to Ho Chi Min City, Hanoi, Da Nang and their 4 international airports, the Red River and Mekong deltas, Phu Quoc Island and coastal plains only, accept. Refer to map.
<i>Malaria Risk Category</i>	B
<i>Previous Malaria Risk</i>	Yes all year whole country until May 2012
<i>Trypanosoma Cruzi Risk</i>	No
<i>Sub Saharan Africa</i>	No
<i>West Nile Virus Risk</i>	No
<i>Tropical Virus Risk</i>	Yes Chikungunya virus, Zika virus and Dengue virus

Malarial Map



This map is only intended as a guide and is not exact. The map must always be used in conjunction with the malaria advice text. Map downloaded from <http://www.fitfortravel.nhs.uk> on 23 June 2017.n .

Update Information This entry was last updated in GDRl Edition 002 Release 24

Wake Atoll

<i>Malaria</i>	No
<i>Trypanosoma Cruzi Risk</i>	No
<i>Sub Saharan Africa</i>	No
<i>West Nile Virus Risk</i>	No
<i>Tropical Virus Risk</i>	No
<i>Update Information</i>	

This entry was last updated in
GDRi Edition 002 Release 01

Wallis and Futuna

<i>Malaria</i>	No
<i>Trypanosoma Cruzi Risk</i>	No
<i>Sub Saharan Africa</i>	No
<i>West Nile Virus Risk</i>	No
<i>Tropical Virus Risk</i>	Yes Dengue virus.
<i>Update Information</i>	This entry was last updated in GDRi Edition 002 Release 17.

West Bank, Gaza Strip and Palestine Occupied Territories

<i>Malaria</i>	No
<i>Trypanosoma Cruzi Risk</i>	No
<i>Sub Saharan Africa</i>	No
<i>West Nile Virus Risk</i>	Yes Donors who have visited between 1st May and the 30th November must have the WNV Donor Selection Guideline applied.
<i>Tropical Virus Risk</i>	No
<i>Update Information</i>	This entry was last updated in GDRi Edition 002 Release 01

West Indies

See See specific island(s) visited

Windward Islands (Caribbean)

<i>Malaria</i>	No
<i>Trypanosoma Cruzi Risk</i>	No
<i>Sub Saharan Africa</i>	No
<i>West Nile Virus Risk</i>	No
<i>Tropical Virus Risk</i>	No
<i>Update Information</i>	

This entry was last updated in
GDR1 Edition 002 Release 01

Yemen

<i>Malaria</i>	Yes All year in most of the country, visitors to Sana'a only, accept.
<i>Malaria Risk Category</i>	B
<i>Previous Malaria Risk</i>	Yes all year whole country (except Aden and airport) until Sept 2015
<i>Trypanosoma Cruzi Risk</i>	No
<i>Sub Saharan Africa</i>	No
<i>West Nile Virus Risk</i>	No
<i>Tropical Virus Risk</i>	Yes Chikungunya Virus and Dengue

Malarial Map



This map is only intended as a guide and is not exact. The map must always be used in conjunction with the malaria advice text. Map downloaded from <http://www.fitfortravel.nhs.uk> on 01 October 2015.

<i>Update Information</i>	This entry was last updated in GDR1 Edition 002 Release 05
---------------------------	---

Zambia

<i>Malaria</i>	Yes All year in whole country
<i>Malaria Risk Category</i>	A
<i>Trypanosoma Cruzi Risk</i>	No
<i>Sub Saharan Africa</i>	Yes

<i>West Nile Virus Risk</i>	No
<i>Tropical Virus Risk</i>	Yes Dengue Virus
<i>Update Information</i>	This entry was last updated in: GDRI Edition 002 Release 44

Zimbabwe

<i>Malaria</i>	Yes All year in most of the country. Visitors to Harare and Bulawayo and the central mountainous region only, accept
<i>Malaria Risk Category</i>	B
<i>Previous Malaria Risk</i>	Yes all year whole country until Dec 2011
<i>Trypanosoma Cruzi Risk</i>	No
<i>Sub Saharan Africa</i>	Yes
<i>West Nile Virus Risk</i>	No
<i>Tropical Virus Risk</i>	Yes Chikungunya Virus
<i>Update Information</i>	This entry was last updated in GDRI Edition 002 Release 05

Updates

Specification of Current Version		
Publication	GDRI	
Edition	002	
Release	44	
Issue	01	31 July 2024

All changes to GDRI Edition 002 after Release 01

Release	Date	Change Notifications	
		Title	CN No.
44	31 July 2024	Malaria risk in Costa Rica	<u>41 - 2024</u>
		Yellow Fever and Dengue	<u>24 - 2024</u>
43	04 April 2024	Updates in the GDRI	<u>04 - 2024</u>
42	05 February 2024	Tropical Virus Risks in the GDRI	<u>02 - 2024</u>
41	23 October 2023	France, Italy and Spain (WNV & Dengue)	<u>34 - 2023</u>
40	16 August 2023	France (WNV & Dengue)	<u>32 - 2023</u>
39	04 July 2023	Malaria	<u>26 - 2023</u>
38	09 May 2023	Viral Haemorrhagic Fever	<u>09 - 2023</u>
		Cuba	<u>08 - 2023</u>
37	31 January 2023	Uganda	<u>05 - 2023</u>
		France	<u>01 - 2023</u>
36	21 September 2022	France and Monaco (Dengue)	<u>60 - 2022</u>
35	30 August 2022	Eswatini	<u>47 - 2022</u>
34	21 July 2022	Thailand	<u>42 - 2022</u>
33	26 April 2022	Netherlands	<u>32 - 2022</u>
		China	<u>24 - 2022</u>
		Viral Haemorrhagic Fever	<u>23 - 2022</u>
		Yellow Fever	<u>21 - 2022</u>
		Congo	<u>18 - 2022</u>
32	20 August 2021	Malaria Free Countries	<u>34 - 2021</u>
		Dengue	<u>33 - 2021</u>
		Guinea	<u>32 - 2021</u>
31	05 May 2021	Malaria	<u>10 - 2021</u>
		Tropical Virus Risk	<u>09 - 2021</u>
30	21 January 2021	Tropical Virus Risk	<u>68 - 2021</u>
		Venezuela	<u>59 - 2021</u>
29	10 November 2020	Netherlands	<u>63 - 2020</u>
28	20 October 2020	Netherlands	<u>62 - 2020</u>
27	21 September 2020	Spain	<u>60 - 2020</u>
26	15 September 2020	Germany	<u>50 - 2020</u>
25	18 August 2020	Spain	<u>49 - 2020</u>
24	20 March 2020	Changes made to: Cambodia Iran Italy Laos Myanmar Vietnam China Hong Kong (S.A.R.)	<u>14 - 2020</u>

		Japan Macau (S.A.R.) Malaysia Singapore South Korea (Republic of) Taiwan Thailand Preliminaries - Malaria - Airport Stopovers	
23	09 March 2020	Italy	<u>12 - 2020</u>
22	26 February 2020	Changes made to: Cambodia Iran Italy Laos Myanmar Vietnam	<u>11 - 2020</u>
21	17 February 2020	Coronavirus	<u>07 - 2020</u>
20	07 February 2020	Changes made to: Hong Kong (S.A.R.) Japan Macau (S.A.R.) Malaysia Singapore South Korea (Republic of) Taiwan Thailand	<u>06 - 2020</u>
19	24 January 2020	China	<u>04 - 2020</u>
18	Issue 02		
	03 September 2019	France and Cyprus	<u>33 - 2019</u>
	Issue 01		
	03 September 2019	Tropical Virus Risk	<u>30 - 2019</u>
		Timor	<u>29 - 2019</u>
		Former Yugoslav Republic of Macedonia	<u>28 - 2019</u>
		United States of America	<u>25 - 2019</u>
		Oman	<u>24 - 2019</u>
17	28 May 2019	Tropical Virus Risk	<u>06 - 2019</u>
		Cape Verde	<u>05 - 2019</u>
16	17 September 2018	Slovenia	<u>35 - 2018</u>
		United Arab Emirates	<u>19 - 2018</u>
		Japan	<u>18 - 2018</u>
15	<i>This release was superseded by Release 16 due to an urgent change.</i>		
14	15 August 2018	Changes made to: France Monaco	<u>34 - 2018</u>
13	10 May 2018	Changes made to: Guinea Liberia Sierra Leone	<u>16 - 2018</u>
12	17 January 2018	Italy (Chikungunya)	<u>03 - 2018</u>
11	02 October 2017	Italy (Chikungunya)	<u>25 - 2017</u>
10	26 September 2017	Changes made to: Burkina Faso Cote D'Ivoire Angola Burindi Cameroon Central African Republic Nigeria Senegal Uganda India	<u>20 - 2017</u>

09	01 August 2017	Changes made to: Azerbaijan Belize Borneo Cambodia China Colombia Eritrea Georgia Ko Samui Laos Malaysia Nepal Philippines Sri Lanka Thailand Vietnam	<u>16 - 2017</u>
08	21 February 2017	Somalia (Chikungunya)	<u>09 - 2017</u>
		Palau and Montserrat (Tropical Virus Risk)	<u>08 - 2017</u>
07	01 November 2016	Uruguay (Tropical Virus Risk)	<u>43 - 2016</u>
		Lesser Antilles (Tropical Virus Risk)	<u>42 - 2016</u>
		Changes made to: Anguilla (Zika) Antigua and Barbuda (Zika) The Bahamas (Zika) Bangladesh (Zika) British Virgin Islands (Zika) Cambodia (Zika) Cook Islands (Zika) French Polynesia (Zika) Gabon (Zika) Grenada (Zika) Indonesia (Zika) Laos (Zika) Malaysia (Zika) Peru (Zika) Saint Barthelemy (Zika) Saint Kitts and Nevis (Zika) Singapore (Zika) Turks and Caicos Islands (Zika) The Cayman Islands (Tropical Virus Risk) Guinea - Bissau (Tropical Virus Risk) Argentina (Tropical Virus Risk)	<u>41 - 2016</u>
		Polynesia	<u>40 - 2016</u>
		Mexico	<u>39 - 2016</u>
		Brunei Darussalam	<u>38 - 2016</u>
		United States of America (Tropical Virus Risk)	<u>49 - 2016</u>
06	27 September 2016	United States of America (Tropical Virus Risk)	<u>49 - 2016</u>
05	05 July 2016	Addition of Previous Malaria Risk	<u>22 - 2016</u>
04	11 May 2016	Change made to: Aruba Belize Jamaica Micronesia (Federated States of) Papua New Guinea Philippines Saint Lucia Sint Maarten Vietnam	<u>30 - 2016</u>
03	31 March 2016	Changes made to: Cuba Dominica Former Netherlands Antilles (Bonaire) Maldives Marshall Islands Saint Vincent and the Grenadines Thailand Tonga Trinidad and Tobago	<u>17 - 2016</u>

		<i>A change was made to the version control definitions and all Issue numbering information removed.</i>	
02	02 February 2016	Addition of Zika Virus to Tropical Virus Risk category	<u>14 - 2016</u> <u>13 - 2016</u>
01	18 January 2016	Complete rewrite of the GDRI	<u>10 - 2016</u>

All changes to GDRI Edition 001 after Release 01

Release	Date	Change Notifications	
		Title	CN No.
31	06 October 2015	Malaria	<u>28 - 2015</u>
		Preliminaries - Malaria	<u>27 - 2015</u>
30	21 September 2015	Saudi Arabia (MERS-CoV)	<u>24 - 2015</u>
29	23 June 2015	Chikungunya Virus	<u>14 - 2015</u>
		Namibia	<u>13 - 2015</u>
28	17 March 2015	Malaria Maps	<u>06 - 2015</u>
27	20 October 2014	Viral Haemorrhagic Fever	<u>43 - 2014</u>
26	14 October 2014	West Nile Virus Risk	<u>42 - 2014</u>
25	19 August 2014	Chikungunya Virus Risk	<u>41 - 2014</u>
24	08 July 2014	Diego Garcia	<u>28 - 2014</u>
		Chikungunya Virus Risk	<u>27 - 2014</u>
23	17 June 2014	Dominican Republic and Saint Lucia	<u>26 - 2014</u>
22	13 February 2014	Changes made to: British Virgin Islands Anguilla Saint Martin Sint Maarten Saint Bathelemy Former Netherlands Antilles Antigua and Barbuda St Kitts and Nevis Montserrat Guadeloupe Dominica Martinique	<u>01 - 2014</u>
21	Issue 02		
	03 September 2013	<i>Virgin Islands and Appendix 1 have been removed and updates made to the Welcome and Preliminaries pages.</i>	
	Issue 01		
	03 September 2013	West Nile Virus	<u>14 - 2013</u>
20	09 July 2013	Chikungunya Virus Risk	<u>04 - 2013</u>
19	31 October 2012	Algeria	<u>26 - 2012</u>
		Hungary, Croatia and Kosovo	<u>25 - 2012</u>
18	31 October 2012	United States of America	<u>21 - 2012</u>
		Iran, Iraq and Vietnam	<u>20 - 2012</u>
17	28 August 2012	West Nile Virus	<u>19 - 2012</u>
16	29 June 2012	Malaria	<u>14 - 2012</u>
15	28 March 2012	West Nile Virus	<u>04 - 2012</u>
14	Issue 02		
	07 November 2011	<i>Spelling of Malaria corrected on all Malaria Risk Category subheadings. Contact information on Preliminaries pages updated.</i>	
	Issue 01		
	07 November 2011	Italy	<u>19 - 2011</u>
13	04 October 2011	Macedonia, Russia and Turkey	<u>18 - 2011</u>

12	31 August 2011	Albania, Israel and Russia	<u>15 - 2011</u>
11	08 August 2011	Greece	<u>13 - 2011</u>
		Romania	<u>12 - 2011</u>
10	01 September 2010	West Nile Virus	<u>10 - 2010</u>
09	06 October 2009	Maldives	<u>27 - 2009</u>
08	28 September 2009	Canada, United States of America	<u>26 - 2009</u>
		Italy	<u>25 - 2009</u>
07	29 April 2009	Italy	<u>11 - 2009</u>
06	23 April 2008	<i>This release is the first implementation of the online GDRI.</i>	
05	31 January 2008	Italy	<u>05 - 2007</u>
		Jamaica	<u>20 - 2006</u>
04	22 October 2007	Preliminaries - Malaria - Airport Stopovers	<u>15 - 2007</u>
03	15 October 2007	Canada, United States of America	<u>08 - 2007</u>
		Bahamas (The)	<u>07 - 2007</u>
02	16 March 2007	Egypt and Ethiopia	<u>02 - 2007</u>
01	12 March 2007	Public release – as PDF only.	