

Geographical Disease Risk Index (GDRI)

Edition 002 - 18 January 2016

Release 49 - 30 April 2025

Issue 01

Introduction

The GDRI is a constituent part of Chapter 3 Care and selection of whole blood and component donors (including donors of pre-deposit autologous blood) Chapter 20 (tissue banking: selection of donors) and Chapter 22 (haemopoietic progenitor cells) of the Guidelines for the Blood Transfusion Services in the United Kingdom.

These criteria are reviewed regularly to ensure that the products collected are of the highest quality and of sufficient quantity to meet the needs of the United Kingdom Blood Transfusion & Tissue Transplantation Services.

JPAC is responsible for this document and receives professional advice from the Standing Advisory Committees that form part of its structure.

Users of these guidelines must ensure that they have the latest version and that recent changes have been implemented (usually within three months) by their national service.

Latest Updates lists alterations to the guidelines made since publication of this edition.

Comments about the content of these guidelines, including notification of errors, omissions and suggestions for improvements, should be sent to the Chair of the Standing Advisory Committee for the Care and Selection of Donors (SACCSD):

Dr Angus Wells angus.wells@nhsbt.nhs.uk

Contents

| | |
|---|-----|
| Introduction | 1 |
| Document and Change Control | 3 |
| General Principles | 4 |
| Use of this Index | 5 |
| Malaria | 6 |
| Human Immunodeficiency Virus (HIV) / Acquired Immune Deficiency Syndrome (AIDS) | 7 |
| A-Z Index | 8 |
| A-Z Topics | 26 |
| Updates | 129 |

Document and Change Control

The GDRI is under the continuing review of the Standing Advisory Committees for the Care and Selection of Donors (SACCSD) and for Transfusion Transmitted Infection (SACTTI). This is to ensure that they are accurate and up to date. All changes have the approval of the UKBTS Joint Professional Advisory Committee (JPAC).

Change Notification.

Changes are notified to the Medical Director and to the Quality Manager of each of the four national services by a Change Notification from the Chairman of JPAC. All changes will have the approval of JPAC.

Implementation of changes is the responsibility of the individual national service.

Document version terminology.

A version shall be any of the following:

Extensive revisions of this document are known as '**Editions**'.

Changes following the issue of 'Change Notification Letters' are known as '**Releases**'.

Changes to the website, which do not involve a change to the medical or scientific content, are given an '**Issue**' number.

Edition Date, Release Date and Issue Date is the date on which an Edition, Release or Issue is first published on the UKBTS website.

Changes to printed versions.

The **Quality Manager** of each Blood Service will effect changes to the document. They will be informed when a new electronic version is released. The **Quality Manager** is responsible for ensuring that there is an effective Document Control and Document Change procedure in operation within their Blood Service to ensure that only up to date versions are in use and that all authorized copies, both electronic and paper, are traceable.

Individual users of the GDRI are responsible for ensuring that they are using an up-to-date version.

Changes to the website versions.

The website will always display the up to date version. Any errors should be notified to JPACOffice@nhsbt.nhs.uk

General Principles

The GDRI should be used to assist selection of donors giving whole blood, blood components (red cells, platelets, plasma and granulocytes), haemopoietic progenitor cells and tissues for therapeutic use.

Donor Selection Procedures aim to minimize the risk of transfusion transmitted infection. Travel to; birth/maternal birth or residency in; and in some cases sexual activity with residents of certain countries, is associated with an increased risk of exposure to infections such as malaria, T cruzi, WNV and HIV. These risks may vary over time and new diseases may occur. Where there is a rapidly emerging geographical disease risk (e.g. SARS or Pandemic Flu) these will be communicated via a **Change Notification** to be used in conjunction with this document.

This list is compiled specifically for risks to the blood and tissue supply in the United Kingdom and may vary from risks or recommendations provided for the protection of the traveller.

To assess the risk of an individual carrying such infections, look up the countries:

- that they have visited
- for which they report sexual contact with a resident or former resident
- in which they were born
- in which their mother was born

If a risk is shown for that country, look at the relevant entry in the appropriate Donor Selection Guidelines (DSG) for the donation type (e.g. Whole Blood & Components or the relevant Tissue DSG) to assess the individual's suitability to donate.

Table of Donor Selection Guidelines (DSG) cross-references

| | | | | | |
|-------------------------------|--------------------------------|--------------------------------|--------------------------------|--------------------------------|-------------------------------|
| Chikungunya Virus | <u>TDSG-BM</u> | <u>TDSG-CB</u> | <u>TDSG-DD</u> | <u>TDSG-LD</u> | <u>WB-DSG</u> |
| Dengue | <u>TDSG-BM</u> | <u>TDSG-CB</u> | <u>TDSG-DD</u> | <u>TDSG-LD</u> | <u>WB-DSG</u> |
| HIV | <u>TDSG-BM</u> | <u>TDSG-CB</u> | <u>TDSG-DD</u> | <u>TDSG-LD</u> | <u>WB-DSG</u> |
| Malaria | <u>TDSG-BM</u> | <u>TDSG-CB</u> | <u>TDSG-DD</u> | <u>TDSG-LD</u> | <u>WB-DSG</u> |
| T Cruzii | <u>TDSG-BM</u> | <u>TDSG-CB</u> | <u>TDSG-DD</u> | <u>TDSG-LD</u> | <u>WB-DSG</u> |
| WNV | <u>TDSG-BM</u> | <u>TDSG-CB</u> | <u>TDSG-DD</u> | <u>TDSG-LD</u> | <u>WB-DSG</u> |
| Viral Haemorrhagic Fever Risk | <u>TDSG-BM</u> | <u>TDSG-CB</u> | <u>TDSG-DD</u> | <u>TDSG-LD</u> | <u>WB-DSG</u> |
| Zika Virus | <u>TDSG-BM</u> | <u>TDSG-CB</u> | <u>TDSG-DD</u> | <u>TDSG-LD</u> | <u>WB-DSG</u> |

This section was last updated in GDRI Edition 002, Release 01

Use of this Index

This index has been prepared to assist the accurate assessment of the geographical risks and contains information on:

- Malaria
- T. cruzi
- HIV risk in Sub Saharan Africa
- WNV
- Chikungunya virus (CHIKV)
- Viral Haemorrhagic Fever Risk (endemic countries only)

Table of Donor Selection Guidelines (DSG) cross-references

| | | | | | |
|-------------------------------|--------------------------------|--------------------------------|--------------------------------|--------------------------------|-------------------------------|
| CHIKV | <u>TDSG-BM</u> | <u>TDSG-CB</u> | <u>TDSG-DD</u> | <u>TDSG-LD</u> | <u>WB-DSG</u> |
| Dengue | <u>TDSG-BM</u> | <u>TDSG-CB</u> | <u>TDSG-DD</u> | <u>TDSG-LD</u> | <u>WB-DSG</u> |
| HIV | <u>TDSG-BM</u> | <u>TDSG-CB</u> | <u>TDSG-DD</u> | <u>TDSG-LD</u> | <u>WB-DSG</u> |
| Malaria | <u>TDSG-BM</u> | <u>TDSG-CB</u> | <u>TDSG-DD</u> | <u>TDSG-LD</u> | <u>WB-DSG</u> |
| T. Cruzi | <u>TDSG-BM</u> | <u>TDSG-CB</u> | <u>TDSG-DD</u> | <u>TDSG-LD</u> | <u>WB-DSG</u> |
| WNV | <u>TDSG-BM</u> | <u>TDSG-CB</u> | <u>TDSG-DD</u> | <u>TDSG-LD</u> | <u>WB-DSG</u> |
| Viral Haemorrhagic Fever Risk | <u>TDSG-BM</u> | <u>TDSG-CB</u> | <u>TDSG-DD</u> | <u>TDSG-LD</u> | <u>WB-DSG</u> |
| Zika Virus | <u>TDSG-BM</u> | <u>TDSG-CB</u> | <u>TDSG-DD</u> | <u>TDSG-LD</u> | <u>WB-DSG</u> |

This section was last updated in GDRI Edition 002, Release 002.

Malaria

Information concerning malaria risk has been sourced from Health Protection Scotland (www.travax.nhs.uk/) with some modifications to account for typical donor travel patterns, entry points to the countries concerned, areas where reporting is compromised and ease of use for end users. They are not identical to those found on the 'Fit for Travel' website which is designed to inform travellers decisions about anti-malarial therapy rather than give assurance of safety of blood donations for recipient patients.

Countries with malarial risk have been categorised into three groups:

A. Countries where the malarial risk is present in the whole country all year or with very clear seasonal guidance.

B. Countries where only parts of the country are affected.

C. Indicates that only part of the country is affected in discrete pockets, or the risk of infection is low or that there are few visitors to the affected areas. It is likely that tourists who visit these countries will be able to donate but individual assessment must be applied. Donors are likely to have detailed knowledge of the malarial areas visited. The health care professional should establish whether the donor sought advice prior to travel or not and if they were advised to take anti malarial precautions.






Malaria Maps

The maps included are to be used to accompany the GDRI when assessing the malaria risk for a donor. They have been sourced from the Fit for travel website. It is important to apply the GDRI guidance for **all** infection risks; these maps only provide advice for malaria risk.

Use Of Maps

Maps are provided to allow staff to assess the malaria risk for the areas within these countries that a donor has visited. **The text of the GDRI should be taken as the main source to make decisions.** The maps present information about neighbouring countries but this should not be used for malarial assessment. The advice below each map relates to the Fit for travel website. Decisions regarding malaria guidance should be made using the template below.

The colours used in the maps are presented below.

| Colour | Sample | Text | Action |
|--------------------|---|--|---|
| Red |  | High risk | Apply Malaria Donor Selection Guideline |
| Dark pink /hatched |  | Variable risk/low risk | Apply Malaria Donor Selection Guideline |
| Light pink |  | Low to no risk | Can donate |
| Yellow |  | Surrounding country with malaria risk | Do not use for malaria assessment |
| Green |  | (Surrounding country with no malaria risk) | Do not use for malaria assessment |

All maps were downloaded from the Fit for travel website (www.fitfortravel.nhs.uk)

Airport Stopovers

The definition of an Airport Stopover, as approved by The Standing Advisory Committee on Transfusion Transmitted Infections, is:

A transit through an airport during which the traveller has not left the airport.

When the donor's visit has consisted **only** of an airport stopover there is no need to refer to the Geographical Disease Risk Index.

This section was last updated in GDRI Edition 002, Release 24, Issue 01

Human Immunodeficiency Virus (HIV) / Acquired Immune Deficiency Syndrome (AIDS)

HIV/AIDS is common in some areas of the world, and sexual activity with partners in these countries carries a risk of infection. This Index identifies the countries of Sub Saharan Africa to facilitate interpretation of the guidance. However the health care professional should consider all other risks of HIV associated with travel and remember that this is not restricted to Sub Saharan Africa.

If the donor reports sexual activity with a partner in one of the countries listed as Sub Saharan Africa in the table, or with a partner who may have been sexually active in one of these areas, refer to the Blood Safety Entry in the Donor Selection Guidelines.

This section was last updated in GDRI Edition 001, Release 01

A-Z Index

A

| | | |
|-----------------------------|--------------------------|-----|
| Abu Dhabi | United Arab Emirates | 121 |
| Acre (Brazil) | Brazil | 37 |
| Acre (Israel) | Israel | 71 |
| Adana | Turkey | 119 |
| Addis Ababa | Ethiopia | 54 |
| Aden | Yemen | 127 |
| Afghanistan | Afghanistan | 26 |
| Ahē | French Polynesia | 57 |
| Ajman | United Arab Emirates | 121 |
| Aklan | Philippines | 98 |
| Al Hoceima | Morocco | 87 |
| Alajuela | Costa Rica | 46 |
| Alaska | United States of America | 122 |
| Albania | Albania | 26 |
| Algeria | Algeria | 27 |
| Alto Parana | Paraguay | 97 |
| Amacuro | Venezuela | 123 |
| Amapa | Brazil | 37 |
| Amazon | Brazil | 37 |
| Amazon River (Brazil) | Brazil | 37 |
| Amazon River (Peru) | Peru | 97 |
| Amazonas | Brazil | 37 |
| Amazonia (Brazil) | Brazil | 37 |
| Amazonia (Venezuela) | Venezuela | 123 |
| American Samoa | American Samoa | 27 |
| Amikova Plain | Turkey | 119 |
| Andaman and Nicobar Islands | India | 66 |
| Andorra | Andorra | 27 |
| Anegada | British Virgin Islands | 38 |
| Angola | Angola | 28 |
| Anguilla | Anguilla | 28 |
| Antalya | Turkey | 119 |
| Antarctica | Antarctica | 28 |
| Antigua | Antigua and Barbuda | 29 |
| Antigua and Barbuda | Antigua and Barbuda | 29 |
| Apure | Venezuela | 123 |
| Ararat Valley | Armenia | 29 |

| For | See | Page |
|-----------------------------|-----------------------------|-------------|
| Argentina | Argentina | 29 |
| Armenia | Armenia | 29 |
| Aruba | Aruba | 29 |
| Ascension Islands | Saint Helena | 102 |
| Ashmore and Cartier Islands | Ashmore and Cartier Islands | 30 |
| Asir | Saudi Arabia | 105 |
| Asmara | Eritrea | 52 |
| Austral Islands (The) | French Polynesia | 57 |
| Australia | Australia | 30 |
| Austria | Austria | 31 |
| Ayacucho | Peru | 97 |
| Azerbaijan | Azerbaijan | 31 |
| Azores | Portugal | 100 |
| B | | |
| Bahamas (The) | Bahamas (The) | 32 |
| Bahrain | Bahrain | 32 |
| Baker Island | Baker Island | 32 |
| Baku | Azerbaijan | 31 |
| Balearic Islands | Spain | 111 |
| Bali | Indonesia | 68 |
| Bangkok | Thailand | 115 |
| Bangladesh | Bangladesh | 32 |
| Bara | Nepal | 90 |
| Barbados | Barbados | 33 |
| Barbuda | Antigua and Barbuda | 29 |
| Basra | Iraq | 69 |
| Bass Islands (The) | French Polynesia | 57 |
| Beijing | China | 43 |
| Belarus | Belarus | 34 |
| Belem City | Brazil | 37 |
| Belgium | Belgium | 34 |
| Belize | Belize | 34 |
| Belorussia | Belarus | 34 |
| Beni | Bolivia | 36 |
| Benin | Benin | 34 |
| Bermuda | Bermuda | 35 |
| Bhutan | Bhutan | 35 |
| Biliran | Philippines | 98 |
| Boa Vista (Brazil) | Brazil | 37 |

| For | See | Page |
|------------------------|--------------------------------|-------------|
| Boa Vista (Cape Verde) | Cape Verde | 41 |
| Bohol | Philippines | 98 |
| Bolivar | Venezuela | 123 |
| Bolivia | Bolivia | 36 |
| Bonaire | Former Netherlands Antilles | 55 |
| Bora Bora | French Polynesia | 57 |
| Borneo | Borneo | 36 |
| Bosnia | Bosnia and Herzegovina | 36 |
| Bosnia and Herzegovina | Bosnia and Herzegovina | 36 |
| Boteti | Botswana | 37 |
| Botswana | Botswana | 37 |
| Bouvet Island | Bouvet Island | 37 |
| Brazil | Brazil | 37 |
| British Antarctic | Antarctica | 28 |
| British Virgin Islands | British Virgin Islands | 38 |
| Brunei Darussalam | Brunei Darussalam | 38 |
| Bulgaria | Bulgaria | 39 |
| Burkina Faso | Burkina Faso | 39 |
| Burma | Myanmar | 88 |
| Burundi | Burundi | 39 |
| Bushehr | Iran | 68 |
| C | | |
| Caaguazú | Paraguay | 97 |
| Cabina | The Republic of The Congo | 117 |
| Cajamarca | Peru | 97 |
| Cambodia | Cambodia | 40 |
| Cameroon | Cameroon | 40 |
| Camiguin | Philippines | 98 |
| Campeche | Mexico | 84 |
| Canada | Canada | 40 |
| Canal zone | Panama | 96 |
| Canary Islands | Spain | 111 |
| Cancun | Mexico | 84 |
| Canendiyu | Paraguay | 97 |
| Cape Verde | Cape Verde | 41 |
| Capiz | Philippines | 98 |
| Caracas | Venezuela | 123 |
| Caribbean | See specific island(s) visited | |
| Catanduanes | Philippines | 98 |

| For | See | Page |
|---------------------------|--------------------------------------|-------------|
| Cayman Islands | Cayman Islands | 41 |
| Cebu | Philippines | 98 |
| Central African Republic | Central African Republic | 42 |
| Cerro de Pasco | Peru | 97 |
| Chachapoyas | Peru | 97 |
| Chad | Chad | 42 |
| Chahar Mahal va Bakhtiari | Iran | 68 |
| Chanca-Andahuaylas | Peru | 97 |
| Chang Jiang River | China | 43 |
| Chiang Mai | Thailand | 115 |
| Chiapas | Mexico | 84 |
| Chihuahua | Mexico | 84 |
| Chile | Chile | 42 |
| China | China | 43 |
| China (Hong Kong) | Hong Kong (S.A.R.) | 65 |
| Chirang | Bhutan | 35 |
| Chobe | Botswana | 37 |
| Christmas Island | Christmas Island | 43 |
| Chuquisaca | Bolivia | 36 |
| Clipperton Island | Clipperton Island | 43 |
| Cochabamba | Bolivia | 36 |
| Cocos (Keeling) Islands | Cocos (Keeling) Islands | 44 |
| Colombia | Colombia | 44 |
| Colombo | Sri Lanka | 112 |
| Comoros | Comoros | 45 |
| Congo | The Democratic Republic of The Congo | 116 |
| Congo | The Republic of The Congo | 117 |
| Cook Islands | Cook Islands | 45 |
| Corfu | Greece | 61 |
| Corrientes | Argentina | 29 |
| Corsica | France | 56 |
| Costa Rica | Costa Rica | 46 |
| Cote D'Ivoire | Cote D'Ivoire | 46 |
| Crete | Greece | 61 |
| Croatia | Croatia | 47 |
| Cuba | Cuba | 47 |
| Cukurova | Turkey | 119 |
| Curacao | Curacao | 47 |

| For | See | Page |
|--|--|-------------|
| Cusco | Peru | 97 |
| Cutervo | Peru | 97 |
| Cuzco City | Peru | 97 |
| Cyprus | Cyprus | 48 |
| Czech Republic | Czech Republic | 48 |
| Czechoslovakia | Czech Republic | 48 |
| D | | |
| Democratic Republic of The Congo | The Democratic Republic of The Congo | 116 |
| Denmark | Denmark | 48 |
| Dhaka City | Bangladesh | 32 |
| Dhanukha | Nepal | 90 |
| Diego Garcia | Diego Garcia | 49 |
| Djibouti | Djibouti | 49 |
| Dominica | Dominica | 49 |
| Dominican Republic | Dominican Republic | 50 |
| Dubai | United Arab Emirates | 121 |
| Duhok | Iraq | 69 |
| Durango | Mexico | 84 |
| Dushanbe | Tajikistan | 114 |
| Dutch Antilles | Former Netherlands Antilles | 55 |
| E | | |
| East Timor | East Timor | 50 |
| Easter Island | Chile | 42 |
| Ecuador | Ecuador | 50 |
| Egypt | Egypt | 51 |
| El Faiyum | Egypt | 51 |
| El Oro | Ecuador | 50 |
| El Salvador | El Salvador | 52 |
| Ellice Islands | Kiribati | 74 |
| Equatorial Guinea | Equatorial Guinea | 52 |
| Erbil | Iraq | 69 |
| Eritrea | Eritrea | 52 |
| Esmeraldas | Ecuador | 50 |
| Estonia | Estonia | 53 |
| Eswatini | Eswatini (formerly known as Swaziland) | 53 |
| Eswatini (formerly known as Swaziland) | Eswatini (formerly known as Swaziland) | 53 |
| Ethiopia | Ethiopia | 54 |
| F | | |
| Falkland Islands (Islas Malvinas) | Falkland Islands (Islas Malvinas) | 54 |
| Faroe Islands | Faroe Islands | 54 |
| Fars | Iran | 68 |

| For | See | Page |
|---|--|-------------|
| Federated States of Micronesia | Micronesia (Federated States of) | 85 |
| Fiji | Fiji | 55 |
| Finland | Finland | 55 |
| Former Netherlands Antilles | Former Netherlands Antilles | 55 |
| Former Yugoslav Republic of Macedonia | North Macedonia | 93 |
| France | France | 56 |
| French Guiana | French Guiana | 57 |
| French Polynesia | French Polynesia | 57 |
| French Southern Territories and Antarctic Lands | French Southern Territories and Antarctic Lands | 58 |
| Fuerteventura | Spain | 111 |
| Fujian | China | 43 |
| G | | |
| Gabon | Gabon | 58 |
| Galapagos Islands | Ecuador | 50 |
| Gambia (The) | Gambia (The) | 58 |
| Gambier Islands (The) | French Polynesia | 57 |
| Gangwon-do (N Korea) | North Korea (Democratic Peoples Republic of) | 93 |
| Gangwon-do (S Korea) | South Korea (Republic of) | 110 |
| Gansu | China | 43 |
| Gaza Strip | West Bank, Gaza Strip and Palestine Occupied Territories | 126 |
| Gelephu (Gelyephug) | Bhutan | 35 |
| Georgia | Georgia | 59 |
| Germany | Germany | 59 |
| Ghana | Ghana | 59 |
| Gibraltar | Gibraltar | 60 |
| Gilbert Islands | Kiribati | 74 |
| Glorioso Islands | Glorioso Islands | 60 |
| Goa | India | 66 |
| Golan Heights | Golan Heights | 60 |
| Gomera | Spain | 111 |
| Gorno-Badakhshan | Tajikistan | 114 |
| Gran Canaria | Spain | 111 |
| Greece | Greece | 61 |
| Greenland | Greenland | 61 |
| Grenada | Grenada | 61 |
| Grenadines | Saint Vincent and the Grenadines | 104 |
| Guadeloupe | Guadeloupe | 62 |
| Guam | Guam | 62 |
| Guanacaste | Costa Rica | 46 |

| For | See | Page |
|----------------------------|----------------------------|-------------|
| Guangdong | China | 43 |
| Guangxi | China | 43 |
| Guatemala | Guatemala | 62 |
| Guayaramerin | Bolivia | 36 |
| Guayas | Ecuador | 50 |
| Guernsey | Guernsey | 63 |
| Guerrero | Mexico | 84 |
| Guimaras | Philippines | 98 |
| Guinea | Guinea | 63 |
| Guinea-Bissau | Guinea-Bissau | 63 |
| Guizhou | China | 43 |
| Guyana | Guyana | 64 |
| H | | |
| Hainan island | China | 43 |
| Haiti | Haiti | 64 |
| Hawaii | United States of America | 122 |
| Heard and McDonald Islands | Heard and McDonald Islands | 64 |
| Heilongjiang | China | 43 |
| Herzegovina | Bosnia and Herzegovina | 36 |
| Hierro | Spain | 111 |
| Himachal Pradesh | India | 66 |
| Hiva 'Oa | French Polynesia | 57 |
| Holland | Netherlands | 90 |
| Honduras | Honduras | 65 |
| Hong Kong (S.A.R.) | Hong Kong (S.A.R.) | 65 |
| Hormozgan | Iran | 68 |
| Howland Island | Howland Island | 65 |
| Huahine | French Polynesia | 57 |
| Huancavelica | Peru | 97 |
| Huang He River | China | 43 |
| Hungary | Hungary | 66 |
| I | | |
| Ibiza | Spain | 111 |
| Iceland | Iceland | 66 |
| Ihrir | Algeria | 27 |
| Ilam | Iran | 68 |
| Illizi | Algeria | 27 |
| Iloilo | Philippines | 98 |
| Inca Trail | Peru | 97 |
| India | India | 66 |

| For | See | Page |
|--------------------|------------------------|-------------|
| Indonesia | Indonesia | 68 |
| Indonesian Timor | Indonesia | 68 |
| Iran | Iran | 68 |
| Iraq | Iraq | 69 |
| Ireland | Ireland | 70 |
| Irian Jaya Island | Indonesia | 68 |
| Island of Dominica | Dominica | 49 |
| Isle of Man | Isle of Man | 70 |
| Israel | Israel | 71 |
| Italy | Italy | 71 |
| Ivory Coast | Cote D'Ivoire | 46 |
| J | | |
| Jaen (Peru) | Peru | 97 |
| Jaen (Spain) | Spain | 111 |
| Jakarta | Indonesia | 68 |
| Jalisco | Mexico | 84 |
| Jamaica | Jamaica | 71 |
| Jammu and Kashmir | India | 66 |
| Jan Mayen | Jan Mayen | 72 |
| Japan | Japan | 72 |
| Jarvis Island | Jarvis Island | 72 |
| Java | Indonesia | 68 |
| Jeddah | Saudi Arabia | 105 |
| Jersey | Jersey | 72 |
| Jilin | China | 43 |
| Johnston Atoll | Johnston Atoll | 73 |
| Jordan | Jordan | 73 |
| Jost Van Dyke | British Virgin Islands | 38 |
| Jujuy | Argentina | 29 |
| Junin (Colombia) | Colombia | 44 |
| Junin (Ecuador) | Ecuador | 50 |
| Junin (Peru) | Peru | 97 |
| K | | |
| Kalimantan | Indonesia | 68 |
| Kalutara | Sri Lanka | 112 |
| Kampuchea | Cambodia | 40 |
| Kapilvastu | Nepal | 90 |
| Kavango River | Namibia | 88 |
| Kavre | Nepal | 90 |
| Kazakhstan | Kazakhstan | 73 |

| For | See | Page |
|-----------------------------|--|-------------|
| Keeling Islands | Cocos (Keeling) Islands | 44 |
| Kenya | Kenya | 74 |
| Kerman | Iran | 68 |
| Khachmas | Azerbaijan | 31 |
| Khatlon | Tajikistan | 114 |
| Khuzestan | Iran | 68 |
| Kingman Reef | Kingman Reef | 74 |
| Kiribati | Kiribati | 74 |
| Kirkuk | Iraq | 69 |
| Ko Samui | Thailand | 115 |
| Kohgiluyeh va Buyer Ahmad | Iran | 68 |
| Korea (North) | North Korea (Democratic Peoples Republic of) | 93 |
| Korea (South) | South Korea (Republic of) | 110 |
| Kosovo | Kosovo | 75 |
| Kruger Park | South Africa | 109 |
| Kunene River | Namibia | 88 |
| Kuwait | Kuwait | 75 |
| Kwazulu Natal | South Africa | 109 |
| Kyrgyzstan | Kyrgyzstan | 75 |
| Kyunggi-do (N Korea) | North Korea (Democratic Peoples Republic of) | 93 |
| Kyunggi-do (S Korea) | South Korea (Republic of) | 110 |
| L | | |
| La Desirade | Guadeloupe | 62 |
| La Libertad | Peru | 97 |
| La Paz | Bolivia | 36 |
| Lacareja | Bolivia | 36 |
| Lake Titikaka | Peru | 97 |
| Lambayeque | Peru | 97 |
| Lanzarote | Spain | 111 |
| Lao Peoples Republic | Laos | 76 |
| Laos | Laos | 76 |
| Latvia | Latvia | 76 |
| Lebanon | Lebanon | 76 |
| Leeward Islands (Caribbean) | Leeward Islands (Caribbean) | 76 |
| Leeward Islands (Pacific) | French Polynesia | 57 |
| Leninabad | Tajikistan | 114 |
| Les Saintes | Guadeloupe | 62 |
| Lesotho | Lesotho | 77 |
| Lesser Antilles | Lesser Antilles | 77 |

| For | See | Page |
|-----------------------------|--------------------|-------------|
| Leyte | Philippines | 98 |
| Liberia | Liberia | 77 |
| Libya | Libya | 78 |
| Liechtenstein | Liechtenstein | 78 |
| Limon (Costa Rica) | Costa Rica | 46 |
| Limon (Dominican Republic) | Dominican Republic | 50 |
| Lithuania | Lithuania | 78 |
| Lombok | Indonesia | 68 |
| Lorestan | Iran | 68 |
| Loreto (Italy) | Italy | 71 |
| Loreto (Mexico) | Mexico | 84 |
| Loreto (Peru) | Peru | 97 |
| Los Rios | Ecuador | 50 |
| Luciano Castillo | Peru | 97 |
| Luxembourg | Luxembourg | 79 |
| M | | |
| Macao | Macau (S.A.R.) | 79 |
| Macapa | Brazil | 37 |
| Macau (S.A.R.) | Macau (S.A.R.) | 79 |
| Macedonia | North Macedonia | 93 |
| Macedonia - Greek Macedonia | Greece | 61 |
| Machu Picchu | Peru | 97 |
| Madagascar | Madagascar | 79 |
| Madeira | Portugal | 100 |
| Mahotari | Nepal | 90 |
| Mai'ao | French Polynesia | 57 |
| Majorca | Spain | 111 |
| Malawi | Malawi | 80 |
| Malaysia | Malaysia | 80 |
| Maldives | Maldives | 82 |
| Mali | Mali | 82 |
| Malta | Malta | 82 |
| Manabi | Ecuador | 50 |
| Manaus | Brazil | 37 |
| Manila | Philippines | 98 |
| Maraba | Brazil | 37 |
| Maranhao | Brazil | 37 |
| Margarita | Venezuela | 123 |
| Margarita island | Venezuela | 123 |

| For | See | Page |
|----------------------------------|----------------------------------|-------------|
| Marie-Galante | Guadeloupe | 62 |
| Marquesas Islands (The) | French Polynesia | 57 |
| Marshall Islands | Marshall Islands | 83 |
| Martinique | Martinique | 83 |
| Mary | Turkmenistan | 120 |
| Masbate | Philippines | 98 |
| Mato Grosso | Brazil | 37 |
| Maupiti | French Polynesia | 57 |
| Mauritania | Mauritania | 83 |
| Mauritius | Mauritius | 84 |
| Mayotte | Mayotte | 84 |
| Mecca | Saudi Arabia | 105 |
| Medina | Saudi Arabia | 105 |
| Meheti'a | French Polynesia | 57 |
| Mexico | Mexico | 84 |
| Michoacán | Mexico | 84 |
| Micronesia (Federated States of) | Micronesia (Federated States of) | 85 |
| Midway Islands | Midway Islands | 86 |
| Minorca | Spain | 111 |
| Misiones | Argentina | 29 |
| Mo'orea | French Polynesia | 57 |
| Moldova | Moldova | 86 |
| Monaco | Monaco | 86 |
| Mongolia | Mongolia | 86 |
| Montenegro | Montenegro | 87 |
| Montserrat | Montserrat | 87 |
| Morocco | Morocco | 87 |
| Morona-Santiago | Ecuador | 50 |
| Mozambique | Mozambique | 88 |
| Mpumalanga | South Africa | 109 |
| Musandam | Oman | 94 |
| Myanmar | Myanmar | 88 |
| N | | |
| Namibia | Namibia | 88 |
| Napo | Ecuador | 50 |
| Nauru | Nauru | 89 |
| Navassa Island | Navassa Island | 90 |
| Nayarit | Mexico | 84 |
| Nei Mongol | China | 43 |

| For | See | Page |
|--|--|-------------|
| Nepal | Nepal | 90 |
| Netherlands | Netherlands | 90 |
| Nevis | Saint Kitts and Nevis | 103 |
| New Caledonia | New Caledonia | 91 |
| New Hebrides | Vanuatu | 123 |
| New Zealand | New Zealand | 91 |
| Ngamiland | Botswana | 37 |
| Nicaragua | Nicaragua | 91 |
| Nicobar Islands | India | 66 |
| Niger | Niger | 92 |
| Nigeria | Nigeria | 92 |
| Ninawa | Iraq | 69 |
| Ningxia | China | 43 |
| Niue | Niue | 92 |
| Norfolk Island | Norfolk Island | 93 |
| North Batinah | China | 43 |
| North Korea (Democratic Peoples Republic of) | North Korea (Democratic Peoples Republic of) | 93 |
| North Macedonia | North Macedonia | 93 |
| Northern Mariana Islands | Northern Mariana Islands | 94 |
| Norway | Norway | 94 |
| Nuku Hiva | French Polynesia | 57 |
| Nuwara Eliya | Sri Lanka | 112 |
| O | | |
| Oaxaca | Mexico | 84 |
| Okavango | Botswana | 37 |
| Omaheke | Namibia | 88 |
| Oman | Oman | 94 |
| Otjozondjupa | Namibia | 88 |
| P | | |
| Pakistan | Pakistan | 95 |
| Palau | Palau | 95 |
| Palestine Occupied Territories | West Bank, Gaza Strip and Palestine Occupied Territories | 126 |
| Palmyra Atoll | Palmyra Atoll | 95 |
| Panama | Panama | 96 |
| Pando | Bolivia | 36 |
| Papua New Guinea | Papua New Guinea | 96 |
| Para | Brazil | 37 |
| Paracel Islands | Paracel Islands | 96 |
| Paraguay | Paraguay | 97 |
| Parsa | Nepal | 90 |

| For | See | Page |
|-----------------------|--------------------------------|-------------|
| Pastaza | Ecuador | 50 |
| Patagonia (Argentina) | Argentina | 29 |
| Pategonia (Chile) | Chile | 42 |
| Pattaya | Thailand | 115 |
| Peru | Peru | 97 |
| Philippines | Philippines | 98 |
| Phuket | Thailand | 115 |
| Pichincha | Ecuador | 50 |
| Pitcairn Islands | Pitcairn Islands | 99 |
| Piura | Peru | 97 |
| Poland | Poland | 99 |
| Polynesia | See specific island(s) visited | |
| Porto Velho | Brazil | 37 |
| Portugal | Portugal | 100 |
| Puerto Rico | Puerto Rico | 100 |
| Puntarenas | Costa Rica | 46 |
| Q | | |
| Qatar | Qatar | 100 |
| Qinghai | China | 43 |
| Quintana Roo | Mexico | 84 |
| R | | |
| Raiatea | French Polynesia | 57 |
| Rautahat | Nepal | 90 |
| Redonda | Antigua and Barbuda | 29 |
| Republic of The Congo | The Republic of The Congo | 117 |
| Reunion | Reunion | 101 |
| Rhodes | Greece | 61 |
| Riberalta | Bolivia | 36 |
| Rodriguez Island | Mauritius | 84 |
| Romania | Romania | 101 |
| Rondonia | Brazil | 37 |
| Roraima | Brazil | 37 |
| Rumania | Romania | 101 |
| Rupendehi | Nepal | 90 |
| Rurenabaque | Bolivia | 36 |
| Russia | Russia | 101 |
| Rwanda | Rwanda | 102 |
| S | | |
| Saba | Former Netherlands Antilles | 55 |
| Sabah | Malaysia | 80 |
| Saint Barthelemy | Saint Barthelemy | 102 |

| For | See | Page |
|------------------------------------|----------------------------------|-------------|
| Saint Croix | United States of America | 122 |
| Saint Helena | Saint Helena | 102 |
| Saint John | United States of America | 122 |
| Saint Kitts | Saint Kitts and Nevis | 103 |
| Saint Kitts and Nevis | Saint Kitts and Nevis | 103 |
| Saint Lucia | Saint Lucia | 103 |
| Saint Martin | Saint Martin | 103 |
| Saint Pierre and Miquelon | Saint Pierre and Miquelon | 104 |
| Saint Thomas | United States of America | 122 |
| Saint Vincent and the Grenadines | Saint Vincent and the Grenadines | 104 |
| Salta | Argentina | 29 |
| Samar | Philippines | 98 |
| Samchi | Bhutan | 35 |
| Samdrupjongkhar | Bhutan | 35 |
| Samoa | Samoa | 104 |
| Samut | Thailand | 115 |
| San Marino | San Marino | 104 |
| San Martin | Peru | 97 |
| Santa Ana | El Salvador | 52 |
| Santa Cruz | Bolivia | 36 |
| Santarem | Brazil | 37 |
| Santiago | Chile | 42 |
| Santiago Island | Cape Verde | 41 |
| Sao Tiago Island | Cape Verde | 41 |
| Sao Tome and Principe | Sao Tome and Principe | 105 |
| Sarawak | Malaysia | 80 |
| Sardinia | Italy | 71 |
| Sarlahi | Nepal | 90 |
| Saudi Arabia | Saudi Arabia | 105 |
| Senegal | Senegal | 105 |
| Sequijor | Philippines | 98 |
| Serbia | Serbia | 106 |
| Serbia and Montenegro (Montenegro) | Montenegro | 87 |
| Serbia and Montenegro (Serbia) | Serbia | 106 |
| Seychelles | Seychelles | 106 |
| Shanxi | China | 43 |
| Sharjah | United Arab Emirates | 121 |
| Shemgang | Bhutan | 35 |

| For | See | Page |
|--|--|-------------|
| Sichuan | China | 43 |
| Sicily | Italy | 71 |
| Side | Turkey | 119 |
| Sierra Leone | Sierra Leone | 106 |
| Sikkim | India | 66 |
| Sinaloa | Mexico | 84 |
| Singapore | Singapore | 107 |
| Sint Eustatius | Former Netherlands Antilles | 55 |
| Sint Maarten | Sint Maarten | 107 |
| Sistan-Baluchestan | Iran | 68 |
| Slovakia | Slovakia | 107 |
| Slovenia | Slovenia | 108 |
| Society Islands (The) | French Polynesia | 57 |
| Solomon Islands | Solomon Islands | 108 |
| Somalia | Somalia | 108 |
| Sonora | Mexico | 84 |
| South Africa | South Africa | 109 |
| South Georgia and the South Sandwich Islands | South Georgia and the South Sandwich Islands | 110 |
| South Korea (Republic of) | South Korea (Republic of) | 110 |
| South Sudan | South Sudan | 110 |
| Spain | Spain | 111 |
| Spratly Islands | Spratly Islands | 111 |
| Sri Lanka | Sri Lanka | 112 |
| Sucumbios | Ecuador | 50 |
| Sudan | Sudan | 112 |
| Sulaimaniya | Iraq | 69 |
| Sumatra | Indonesia | 68 |
| Sun City | South Africa | 109 |
| Suriname | Suriname | 112 |
| Svalbard | Svalbard | 113 |
| Swaziland | Eswatini (formerly known as Swaziland) | 53 |
| Sweden | Sweden | 113 |
| Switzerland | Switzerland | 113 |
| Syria | Syria | 114 |
| T | | |
| Ta'mim | Iraq | 69 |
| Tabasco | Mexico | 84 |
| Taha'a | French Polynesia | 57 |
| Tahiti | French Polynesia | 57 |

| For | See | Page |
|--------------------------------------|--------------------------------------|-------------|
| Taif | Saudi Arabia | 105 |
| Taiwan | Taiwan | 114 |
| Tajikistan | Tajikistan | 114 |
| Taman Negara National Park | Malaysia | 80 |
| Tanzania | Tanzania | 115 |
| Taounate | Morocco | 87 |
| Tarija | Bolivia | 36 |
| Taza | Morocco | 87 |
| Tenerife | Spain | 111 |
| Terai | Nepal | 90 |
| Tetiaroa | French Polynesia | 57 |
| Thailand | Thailand | 115 |
| The Bahamas | Bahamas (The) | 32 |
| The Democratic Republic of The Congo | The Democratic Republic of The Congo | 116 |
| The Gambia | Gambia (The) | 58 |
| The Republic of The Congo | The Republic of The Congo | 117 |
| Tiago Island | Cape Verde | 41 |
| Tibet | China | 43 |
| Timor | East Timor | 50 |
| Timor | Indonesia | 68 |
| Timor Leste | East Timor | 50 |
| Tobago | Trinidad and Tobago | 118 |
| Tocantins | Brazil | 37 |
| Togo | Togo | 117 |
| Tokelau | Tokelau | 117 |
| Tonga | Tonga | 118 |
| Toronto | Canada | 40 |
| Tortola | British Virgin Islands | 38 |
| Transjordan | Jordan | 73 |
| Transvaal | South Africa | 109 |
| Trinidad and Tobago | Trinidad and Tobago | 118 |
| Tristan da Cunha | Saint Helena | 102 |
| Tromelin Island | Tromelin Island | 118 |
| Tuamotu Archipelago (The) | French Polynesia | 57 |
| Tugela River | South Africa | 109 |
| Tumbes | Peru | 97 |
| Tunisia | Tunisia | 119 |
| Tupua'i | French Polynesia | 57 |

| For | See | Page |
|--|--|-------------|
| Turkey | Turkey | 119 |
| Turkmenistan | Turkmenistan | 120 |
| Turks and Caicos Islands | Turks and Caicos Islands | 120 |
| Tutume | Botswana | 37 |
| Tuvalu | Tuvalu | 120 |
| Tūpai | French Polynesia | 57 |
| U | | |
| U.S. Virgin Islands | United States of America | 122 |
| Ucayali | Peru | 97 |
| Uganda | Uganda | 121 |
| Ukraine | Ukraine | 121 |
| Umm al Qaiwain | United Arab Emirates | 121 |
| United Arab Emirates | United Arab Emirates | 121 |
| United Kingdom | United Kingdom | 122 |
| United States of America | United States of America | 122 |
| Upper Volta | Burkina Faso | 39 |
| Uruguay | Uruguay | 123 |
| Uzbekistan | Uzbekistan | 123 |
| V | | |
| Vanuatu | Vanuatu | 123 |
| Venezuela | Venezuela | 123 |
| Vientiane | Laos | 76 |
| Vietnam | Vietnam | 124 |
| Virgin Gorda | British Virgin Islands | 38 |
| W | | |
| Wake Atoll | Wake Atoll | 125 |
| Wallis and Futuna | Wallis and Futuna | 126 |
| Water Island | United States of America | 122 |
| West Bank | West Bank, Gaza Strip and Palestine Occupied Territories | 126 |
| West Bank, Gaza Strip and Palestine Occupied Territories | West Bank, Gaza Strip and Palestine Occupied Territories | 126 |
| West Indies | See specific island(s) visited | |
| West Papua | Indonesia | 68 |
| West Timor | Indonesia | 68 |
| Windward Islands (Caribbean) | Windward Islands (Caribbean) | 126 |
| Windward Islands (Pacific) | French Polynesia | 57 |
| X | | |
| Xinjiang | China | 43 |
| Xizang | China | 43 |
| Y | | |
| Yangtze River | China | 43 |
| Yellow River | China | 43 |
| Yemen | Yemen | 127 |
| Yunnan | China | 43 |

| For | See | Page |
|------------------|---------------------------|-------------|
| Z | | |
| Zagros mountains | Iran | 68 |
| Zaire | The Republic of The Congo | 117 |
| Zambia | Zambia | 127 |
| Zamora-Chinchipe | Ecuador | 50 |
| Zangbo River | China | 43 |
| Zanzibar | Tanzania | 115 |
| Zimbabwe | Zimbabwe | 128 |
| Zululand | South Africa | 109 |

Afghanistan

| | |
|-------------------------------|--|
| <i>Malaria</i> | Yes May - November in all areas except the central highlands. |
| <i>Malaria Risk Category</i> | B |
| <i>Previous Malaria Risk</i> | Yes all year whole country until Feb 1996 Yes whole country below 2000m (May-Nov) until Sept 2015 |
| <i>Trypanosoma Cruzi Risk</i> | No |
| <i>Sub Saharan Africa</i> | No |
| <i>West Nile Virus Risk</i> | No |
| <i>Tropical Virus Risk</i> | Yes Dengue Virus |

Malarial Map



This map is only intended as a guide and is not exact. The map must always be used in conjunction with the malaria advice text. Map downloaded from <http://www.fitfortravel.nhs.uk> on 01 October 2015.

Update Information

This entry was last updated in
GDRI Edition 002 Release 30.

Albania

| | |
|-------------------------------|----|
| <i>Malaria</i> | No |
| <i>Trypanosoma Cruzi Risk</i> | No |
| <i>Sub Saharan Africa</i> | No |

| | |
|-----------------------------|--|
| <i>West Nile Virus Risk</i> | Yes Donors who have visited between 1st May and the 30th November must have the WNV Donor Selection Guideline applied. |
| <i>Tropical Virus Risk</i> | No |
| <i>Update Information</i> | This entry was last updated in GDRI Edition 002 Release 01 |

Algeria

| | |
|-------------------------------|---|
| <i>Malaria</i> | No |
| <i>Previous Malaria Risk</i> | Yes All year whole country until February 1996 From March 1996 to May 2019: desert oasis of Ihrir (Illizi Department) only |
| <i>Trypanosoma Cruzi Risk</i> | No |
| <i>Sub Saharan Africa</i> | No |
| <i>West Nile Virus Risk</i> | Yes Donors who have visited between 1st May and the 30th November must have the WNV Donor Selection Guideline applied. |
| <i>Tropical Virus Risk</i> | No |
| <i>Update Information</i> | This entry was last updated in GDRI Edition 002 Release 32 |

American Samoa

| | |
|-------------------------------|---|
| <i>Malaria</i> | No |
| <i>Trypanosoma Cruzi Risk</i> | No |
| <i>Sub Saharan Africa</i> | No |
| <i>West Nile Virus Risk</i> | No |
| <i>Tropical Virus Risk</i> | Yes Chikungunya Virus, Dengue and Zika Virus |
| <i>Update Information</i> | This entry was last updated in GDRI Edition 002 Release 02 |

Andorra

| | |
|-------------------------------|----|
| <i>Malaria</i> | No |
| <i>Trypanosoma Cruzi Risk</i> | No |
| <i>Sub Saharan Africa</i> | No |
| <i>West Nile Virus Risk</i> | No |

| | |
|----------------------------|---|
| <i>Tropical Virus Risk</i> | No |
| <i>Update Information</i> | This entry was last updated in GDRI Edition 002 Release 01 |

Angola

| | |
|-------------------------------|---|
| <i>Malaria</i> | Yes All year in whole country |
| <i>Malaria Risk Category</i> | A |
| <i>Trypanosoma Cruzi Risk</i> | No |
| <i>Sub Saharan Africa</i> | Yes |
| <i>West Nile Virus Risk</i> | No |
| <i>Tropical Virus Risk</i> | Yes Dengue Virus, Yellow Fever and Zika Virus |
| <i>Update Information</i> | This entry was last updated in GDRI Edition 002 Release 33 |

Anguilla

| | |
|-------------------------------|---|
| <i>Malaria</i> | No |
| <i>Trypanosoma Cruzi Risk</i> | No |
| <i>Sub Saharan Africa</i> | No |
| <i>West Nile Virus Risk</i> | No |
| <i>Tropical Virus Risk</i> | Yes Chikungunya Virus and Zika Virus |
| <i>Update Information</i> | This entry was last updated in GDRI Edition 002 Release 07 |

Antarctica

| | |
|-------------------------------|---|
| <i>Malaria</i> | No |
| <i>Trypanosoma Cruzi Risk</i> | No |
| <i>Sub Saharan Africa</i> | No |
| <i>West Nile Virus Risk</i> | No |
| <i>Tropical Virus Risk</i> | No |
| <i>Update Information</i> | This entry was last updated in GDRI Edition 002 Release 01 |

Antigua and Barbuda

| | |
|-------------------------------|---|
| <i>Malaria</i> | No |
| <i>Trypanosoma Cruzi Risk</i> | No |
| <i>Sub Saharan Africa</i> | No |
| <i>West Nile Virus Risk</i> | No |
| <i>Tropical Virus Risk</i> | Yes Chikungunya Virus and Zika Virus |
| <i>Update Information</i> | This entry was last updated in GDRI Edition 002 Release 07 |

Argentina

| | |
|-------------------------------|--|
| <i>Malaria</i> | No |
| <i>Previous Malaria Risk</i> | Yes Until February 1996: All year in rural areas March 1996 to September 2006: October to May, areas below 1200m only October 2006 to May 2019: All year in rural areas of Salta, Jujuy, Misiones and Corrientes |
| <i>Trypanosoma Cruzi Risk</i> | Yes |
| <i>Sub Saharan Africa</i> | No |
| <i>West Nile Virus Risk</i> | No |
| <i>Tropical Virus Risk</i> | Yes Chikungunya Virus, Dengue Virus, Yellow Fever and Zika Virus |
| <i>Update Information</i> | This entry was last updated in GDRI Edition 002 Release 43 |

Armenia

| | |
|-------------------------------|--|
| <i>Malaria</i> | No |
| <i>Previous Malaria Risk</i> | Yes Jun-Oct Ararat Valley until Sept 2015 |
| <i>Trypanosoma Cruzi Risk</i> | No |
| <i>Sub Saharan Africa</i> | No |
| <i>West Nile Virus Risk</i> | Yes Donors who have visited between 1st May and 30th November must have the WNV Donor Selection Guideline applied. |
| <i>Tropical Virus Risk</i> | No |
| <i>Update Information</i> | This entry was last updated in GDRI Edition 002 Release 46 |

Aruba

| | |
|-------------------------------|---|
| <i>Malaria</i> | No |
| <i>Trypanosoma Cruzi Risk</i> | No |
| <i>Sub Saharan Africa</i> | No |
| <i>West Nile Virus Risk</i> | No |
| <i>Tropical Virus Risk</i> | Yes Dengue virus and Zika virus |
| <i>Update Information</i> | This entry was last updated in GDRI Edition 002 Release 04 |

Ashmore and Cartier Islands

| | |
|-------------------------------|---|
| <i>Malaria</i> | No |
| <i>Trypanosoma Cruzi Risk</i> | No |
| <i>Sub Saharan Africa</i> | No |
| <i>West Nile Virus Risk</i> | No |
| <i>Tropical Virus Risk</i> | No |
| <i>Update Information</i> | This entry was last updated in GDRI Edition 002 Release 01 |

Australia

| | |
|-------------------------------|--|
| <i>Malaria</i> | No |
| <i>Trypanosoma Cruzi Risk</i> | No |
| <i>Sub Saharan Africa</i> | No |
| <i>West Nile Virus Risk</i> | No |
| <i>Tropical Virus Risk</i> | Yes Dengue Virus in the state of Queensland. (Map data ©2024 Google) |



Update Information

This entry was last updated in:
GDRI Edition 002 Release 44

Austria

| | |
|-------------------------------|--|
| <i>Malaria</i> | No |
| <i>Trypanosoma Cruzi Risk</i> | No |
| <i>Sub Saharan Africa</i> | No |
| <i>West Nile Virus Risk</i> | Yes Donors who have visited between 1st May and the 30th November must have the WNV Donor Selection Guideline applied. |
| <i>Tropical Virus Risk</i> | No |
| <i>Update Information</i> | This entry was last updated in GDRI Edition 002 Release 01 |

Azerbaijan

| | |
|-------------------------------|--|
| <i>Malaria</i> | No |
| <i>Trypanosoma Cruzi Risk</i> | No |
| <i>Sub Saharan Africa</i> | No |
| <i>West Nile Virus Risk</i> | No |
| <i>Tropical Virus Risk</i> | No |
| <i>Update Information</i> | This entry was last updated in GDRI Edition 002 Release 39. |

Bahamas (The)

| | |
|-------------------------------|---|
| <i>Malaria</i> | No |
| <i>Previous Malaria Risk</i> | Yes Great Exuma Island only Jul-Oct 2006 and Sept 2007- Sept 2015 |
| <i>Trypanosoma Cruzi Risk</i> | No |
| <i>Sub Saharan Africa</i> | No |
| <i>West Nile Virus Risk</i> | No |
| <i>Tropical Virus Risk</i> | Yes Chikungunya Virus and Zika Virus |
| <i>Update Information</i> | This entry was last updated in GDRI Edition 002 Release 07 |

Bahrain

| | |
|-------------------------------|--|
| <i>Malaria</i> | No |
| <i>Trypanosoma Cruzi Risk</i> | No |
| <i>Sub Saharan Africa</i> | No |
| <i>West Nile Virus Risk</i> | No |
| <i>Tropical Virus Risk</i> | No |
| <i>Update Information</i> | This entry was last updated in GDRI Edition 002 Release 01 |

Baker Island

| | |
|-------------------------------|--|
| <i>Malaria</i> | No |
| <i>Trypanosoma Cruzi Risk</i> | No |
| <i>Sub Saharan Africa</i> | No |
| <i>West Nile Virus Risk</i> | No |
| <i>Tropical Virus Risk</i> | No |
| <i>Update Information</i> | This entry was last updated in GDRI Edition 002 Release 01 |

Bangladesh

| | |
|----------------|---|
| <i>Malaria</i> | Yes All year in the districts south and east of Comilla city. |
|----------------|---|

| | |
|-------------------------------|---|
| <i>Malaria Risk Category</i> | C |
| <i>Previous Malaria Risk</i> | Yes all year whole country until Sept 2015 |
| <i>Trypanosoma Cruzi Risk</i> | No |
| <i>Sub Saharan Africa</i> | No |
| <i>West Nile Virus Risk</i> | No |
| <i>Tropical Virus Risk</i> | Yes Chikungunya Virus, Dengue Virus and Zika Virus |

Malarial Map



This map is only intended as a guide and is not exact. The map must always be used in conjunction with the malaria advice text. Map downloaded from <http://www.fitfortravel.nhs.uk> on 01 October 2015.

| | |
|---------------------------|---|
| <i>Update Information</i> | This entry was last updated in GDRI Edition 002 Release 07 |
|---------------------------|---|

Barbados

| | |
|-------------------------------|---|
| <i>Malaria</i> | No |
| <i>Trypanosoma Cruzi Risk</i> | No |
| <i>Sub Saharan Africa</i> | No |
| <i>West Nile Virus Risk</i> | No |
| <i>Tropical Virus Risk</i> | Yes , Dengue and Zika virus |
| <i>Update Information</i> | This entry was last updated in GDRI Edition 002 Release 02 |

Belarus

| | |
|-------------------------------|--|
| <i>Malaria</i> | No |
| <i>Trypanosoma Cruzi Risk</i> | No |
| <i>Sub Saharan Africa</i> | No |
| <i>West Nile Virus Risk</i> | No |
| <i>Tropical Virus Risk</i> | No |
| <i>Update Information</i> | This entry was last updated in GDRI Edition 002 Release 01 |

Belgium

| | |
|-------------------------------|--|
| <i>Malaria</i> | No |
| <i>Trypanosoma Cruzi Risk</i> | No |
| <i>Sub Saharan Africa</i> | No |
| <i>West Nile Virus Risk</i> | No |
| <i>Tropical Virus Risk</i> | No |
| <i>Update Information</i> | This entry was last updated in GDRI Edition 002 Release 01 |

Belize

| | |
|-------------------------------|---|
| <i>Malaria</i> | Malaria risk is low in Stan Creek but negligible elsewhere |
| <i>Malaria Risk Category</i> | C |
| <i>Previous Malaria Risk</i> | All year in whole country – Cat A until Dec 2016. |
| <i>Trypanosoma Cruzi Risk</i> | Yes |
| <i>Sub Saharan Africa</i> | No |
| <i>West Nile Virus Risk</i> | No |
| <i>Tropical Virus Risk</i> | Yes Chikungunya virus and Zika virus |
| <i>Update Information</i> | This entry was last updated in GDRI Edition 002 Release 09. |

Benin

| | |
|--------------------------------------|---|
| <i>Malaria</i> | Yes All year in whole country |
| <i>Malaria Risk Category</i> | A |
| <i>Trypanosoma Cruzi Risk</i> | No |
| <i>Sub Saharan Africa</i> | Yes |
| <i>West Nile Virus Risk</i> | No |
| <i>Tropical Virus Risk</i> | Yes Chikungunya Virus, Yellow Fever and Dengue Virus |
| <i>Viral Haemorrhagic Fever Risk</i> | Yes |
| <i>Update Information</i> | This entry was last updated in GDRI Edition 002 Release 33 |

Bermuda

| | |
|-------------------------------|--|
| <i>Malaria</i> | No |
| <i>Trypanosoma Cruzi Risk</i> | No |
| <i>Sub Saharan Africa</i> | No |
| <i>West Nile Virus Risk</i> | No |
| <i>Tropical Virus Risk</i> | Yes Chikungunya Virus |
| <i>Update Information</i> | This entry was last updated in GDRI Edition 002 Release 01 |

Bhutan

| | |
|-------------------------------|---|
| <i>Malaria</i> | Yes All year in low lying southern districts of Chukha, Dagana, Samtse, Sandrup, Jonkar and Zhemgang. Most northern regions are at high altitude where transmission is very unusual. |
| <i>Malaria Risk Category</i> | C |
| <i>Previous Malaria Risk</i> | Yes all year whole country until Feb1996 |
| <i>Trypanosoma Cruzi Risk</i> | No |
| <i>Sub Saharan Africa</i> | No |
| <i>West Nile Virus Risk</i> | No |
| <i>Tropical Virus Risk</i> | Yes Dengue Virus |
| <i>Update Information</i> | This entry was last updated in GDRI Edition 002 Release 30. |

Bolivia

| | |
|-------------------------------|---|
| <i>Malaria</i> | Yes All year in areas below 2500m in the regions of Beni, Pando and Santa Cruz. |
| <i>Malaria Risk Category</i> | B |
| <i>Previous Malaria Risk</i> | Yes all year whole country until Feb1996 |
| <i>Trypanosoma Cruzi Risk</i> | Yes |
| <i>Sub Saharan Africa</i> | No |
| <i>West Nile Virus Risk</i> | No |
| <i>Tropical Virus Risk</i> | Yes Chikungunya Virus, Dengue Virus, Yellow Fever and Zika Virus |
| <i>Update Information</i> | This entry was last updated in GDRI Edition 002 Release 33 |

Borneo

| | |
|-------------------------------|---|
| <i>Malaria</i> | See <u>Brunei Darussalam</u> and/or <u>Indonesia</u> and/or <u>Malaysia</u> |
| <i>Malaria Risk Category</i> | B |
| <i>Trypanosoma Cruzi Risk</i> | No |
| <i>Sub Saharan Africa</i> | No |
| <i>West Nile Virus Risk</i> | No |
| <i>Tropical Virus Risk</i> | Yes Chikungunya, Dengue and Zika virus |
| <i>Update Information</i> | This entry was last updated in GDRI Edition 002 Release 09. |

Bosnia and Herzegovina

| | |
|-------------------------------|--|
| <i>Malaria</i> | No |
| <i>Trypanosoma Cruzi Risk</i> | No |
| <i>Sub Saharan Africa</i> | No |
| <i>West Nile Virus Risk</i> | Yes Donors who have visited between 1st May and the 30th November must have the WNV Donor Selection Guideline applied. |
| <i>Tropical Virus Risk</i> | No |
| <i>Update Information</i> | This entry was last updated in GDRI Edition 002 Release 01 |

Botswana

| | |
|-------------------------------|---|
| <i>Malaria</i> | Yes Risk exists throughout the year but especially from November to June in the northern parts of the country including the regions along the Zimbabwean border, the Zambezi river and all the Game Parks to the north of the Kalahari desert |
| <i>Malaria Risk Category</i> | B |
| <i>Previous Malaria Risk</i> | Yes all year whole country until Feb 1996 |
| <i>Trypanosoma Cruzi Risk</i> | No |
| <i>Sub Saharan Africa</i> | Yes |
| <i>West Nile Virus Risk</i> | No |
| <i>Tropical Virus Risk</i> | No |
| <i>Update Information</i> | This entry was last updated in GDRI Edition 002 Release 05 |

Bouvet Island

| | |
|-------------------------------|--|
| <i>Malaria</i> | No |
| <i>Trypanosoma Cruzi Risk</i> | No |
| <i>Sub Saharan Africa</i> | No |
| <i>West Nile Virus Risk</i> | No |
| <i>Tropical Virus Risk</i> | No |
| <i>Update Information</i> | This entry was last updated in GDRI Edition 002 Release 01 |

Brazil

| | |
|-------------------------------|--|
| <i>Malaria</i> | Yes All year in the states of: Amazonia (Acre, Amapa, Amazonas, Maranhão (west)), Mato Grosso (north), Para (except Belem City on the coast), Rondônia, Roraima and Tocantins including the urban areas Porto Velho, Boa Vista, Cruzeiro do sol, Rio Branco, Macapa, Manaus, Santarém and Maraba. All year on cruises up the Amazon including the city of Manaus. All year in the jungle and rural areas outside the resort Iguaçu Falls especially towards Paraguay. |
| <i>Malaria Risk Category</i> | B |
| <i>Previous Malaria Risk</i> | Yes all year whole country until Feb 1996 Yes all year rural areas below 900m until Sept 2006 |
| <i>Trypanosoma Cruzi Risk</i> | Yes |
| <i>Sub Saharan Africa</i> | No |

| | |
|-----------------------------|---|
| <i>West Nile Virus Risk</i> | No |
| <i>Tropical Virus Risk</i> | Yes Chikungunya Virus, Dengue Virus, Yellow Fever and Zika Virus |

Malarial Map



This map is only intended as a guide and is not exact. The map must always be used in conjunction with the malaria advice text. Map downloaded from <http://www.fitfortravel.nhs.uk> on 01 October 2015.

| | |
|---------------------------|---|
| <i>Update Information</i> | This entry was last updated in GDRI Edition 002 Release 33 |
|---------------------------|---|

British Virgin Islands

| | |
|-------------------------------|---|
| <i>Malaria</i> | No |
| <i>Trypanosoma Cruzi Risk</i> | No |
| <i>Sub Saharan Africa</i> | No |
| <i>West Nile Virus Risk</i> | No |
| <i>Tropical Virus Risk</i> | Yes Chikungunya Virus and Zika Virus |
| <i>Update Information</i> | This entry was last updated in GDRI Edition 002 Release 07 |

Brunei Darussalam

| | |
|----------------|------------|
| <i>Malaria</i> | Yes |
|----------------|------------|

| | |
|-------------------------------|--|
| <i>Malaria Risk Category</i> | A |
| <i>Trypanosoma Cruzi Risk</i> | No |
| <i>Sub Saharan Africa</i> | No |
| <i>West Nile Virus Risk</i> | No |
| <i>Tropical Virus Risk</i> | Yes Zika virus |
| <i>Update Information</i> | This entry was last updated in GDRI Edition 002 Release 07 |

Bulgaria

| | |
|-------------------------------|--|
| <i>Malaria</i> | No |
| <i>Trypanosoma Cruzi Risk</i> | No |
| <i>Sub Saharan Africa</i> | No |
| <i>West Nile Virus Risk</i> | Yes Donors who have visited between 1st May and the 30th November must have the WNV Donor Selection Guideline applied. |
| <i>Tropical Virus Risk</i> | No |
| <i>Update Information</i> | This entry was last updated in GDRI Edition 002 Release 01 |

Burkina Faso

| | |
|-------------------------------|--|
| <i>Malaria</i> | Yes All year in whole country |
| <i>Malaria Risk Category</i> | A |
| <i>Trypanosoma Cruzi Risk</i> | No |
| <i>Sub Saharan Africa</i> | Yes |
| <i>West Nile Virus Risk</i> | No |
| <i>Tropical Virus Risk</i> | Yes Chikungunya Virus, Dengue Virus, Yellow Fever and Zika Virus |
| <i>Update Information</i> | This entry was last updated in GDRI Edition 002 Release 42 |

Burundi

| | |
|----------------|---|
| <i>Malaria</i> | Yes All year in whole country |
|----------------|---|

| | |
|-------------------------------|---|
| <i>Malaria Risk Category</i> | A |
| <i>Trypanosoma Cruzi Risk</i> | No |
| <i>Sub Saharan Africa</i> | Yes |
| <i>West Nile Virus Risk</i> | No |
| <i>Tropical Virus Risk</i> | Yes - Chikungunya Virus. Yellow Fever and Zika Virus |
| <i>Update Information</i> | This entry was last updated in GDRI Edition 002 Release 33 |

Cambodia

| | |
|-------------------------------|---|
| <i>Malaria</i> | Yes All year, most of the country. Visitors to Phnom Penh, Siem Reap and Angkor Wat only, accept |
| <i>Malaria Risk Category</i> | B |
| <i>Previous Malaria Risk</i> | Yes all year whole country until Dec 2011 |
| <i>Trypanosoma Cruzi Risk</i> | No |
| <i>Sub Saharan Africa</i> | No |
| <i>West Nile Virus Risk</i> | No |
| <i>Tropical Virus Risk</i> | Yes Chikungunya Virus, Dengue Virus and Zika Virus |
| <i>Update Information</i> | This entry was last updated in GDRI Edition 002 Release 24 |

Cameroon

| | |
|-------------------------------|--|
| <i>Malaria</i> | Yes All year in whole country |
| <i>Malaria Risk Category</i> | A |
| <i>Trypanosoma Cruzi Risk</i> | No |
| <i>Sub Saharan Africa</i> | Yes |
| <i>West Nile Virus Risk</i> | No |
| <i>Tropical Virus Risk</i> | Yes Chikungunya Virus, Yellow Fever and Zika Virus |
| <i>Update Information</i> | This entry was last updated in GDRI Edition 002 Release 33 |

Canada

| | |
|-------------------------------|--|
| <i>Malaria</i> | No |
| <i>Trypanosoma Cruzi Risk</i> | No |
| <i>Sub Saharan Africa</i> | No |
| <i>West Nile Virus Risk</i> | Yes Donors who have visited between 1st May and the 30th November must have the WNV Donor Selection Guideline applied. |
| <i>Tropical Virus Risk</i> | No |
| <i>Update Information</i> | This entry was last updated in GDRI Edition 002 Release 01 |

Cape Verde

| | |
|-------------------------------|---|
| <i>Malaria</i> | Yes There is a risk of malaria all year on the islands of Boa Vista and Santiago (Sao Tiago), including the capital city Praia. Visitors to other islands, including the Sal Islands, can be accepted. |
| <i>Malaria Risk Category</i> | B |
| <i>Previous Malaria Risk</i> | All year in whole of country until end 1993 From 1994, all year in Boa Vista or Sao Tiago Island |
| <i>Trypanosoma Cruzi Risk</i> | No |
| <i>Sub Saharan Africa</i> | No |
| <i>West Nile Virus Risk</i> | No |
| <i>Tropical Virus Risk</i> | Yes Chikungunya, Dengue virus and Zika virus |
| <i>Update Information</i> | This entry was last updated in GDRI Edition 002 Release 17. |

Caribbean

See See specific island(s) visited

Cayman Islands

| | |
|-------------------------------|----|
| <i>Malaria</i> | No |
| <i>Trypanosoma Cruzi Risk</i> | No |
| <i>Sub Saharan Africa</i> | No |
| <i>West Nile Virus Risk</i> | No |

Tropical Virus Risk **Yes** Dengue Virus and Zika Virus

Update Information This entry was last updated in
GDRI Edition 002 Release 43

Central African Republic

Malaria **Yes**
All year in whole country

*Malaria Risk
Category* **A**

*Trypanosoma Cruzi
Risk* No

Sub Saharan Africa **Yes**

West Nile Virus Risk No

Tropical Virus Risk **Yes** – Chikungunya Virus, Yellow Fever and Zika Virus

Update Information This entry was last updated in
GDRI Edition 002 Release 33

Chad

Malaria **Yes**
All year in whole country

*Malaria Risk
Category* **A**

*Trypanosoma Cruzi
Risk* No

Sub Saharan Africa **Yes**

West Nile Virus Risk No

Tropical Virus Risk **Yes**
Chikungunya Virus, Dengue Virus and Yellow Fever

Update Information This entry was last updated in
GDRI Edition 002 Release 42

Chile

Malaria No

*Trypanosoma Cruzi
Risk* **Yes**

Sub Saharan Africa No

West Nile Virus Risk No

Tropical Virus Risk **Yes** - Zika Virus in Easter Island

Update Information This entry was last updated in
GDRI Edition 002 Release 07

China

| | |
|-------------------------------|--|
| <i>Malaria</i> | No |
| <i>Previous Malaria Risk</i> | Until February 1996: whole country March 1996 to September 2006: whole country below 1500m October 2006 to Jan 2016: Hainan Island, Anhui, Guizhou, Henan, Hubei and Jiangsu provinces Feb 2016 to June 2021: Yunnan province |
| <i>Trypanosoma Cruzi Risk</i> | No |
| <i>Sub Saharan Africa</i> | No |
| <i>West Nile Virus Risk</i> | No |
| <i>Tropical Virus Risk</i> | Yes Chikungunya Virus and Dengue Virus |
| <i>Update Information</i> | This entry was last updated in GDRI Edition 002 Release 33 |

Christmas Island

| | |
|-------------------------------|---|
| <i>Malaria</i> | No |
| <i>Trypanosoma Cruzi Risk</i> | No |
| <i>Sub Saharan Africa</i> | No |
| <i>West Nile Virus Risk</i> | No |
| <i>Tropical Virus Risk</i> | No |
| <i>Update Information</i> | This entry was last updated in GDRI Edition 002 Release 01 |

Clipperton Island

| | |
|-------------------------------|---|
| <i>Malaria</i> | No |
| <i>Trypanosoma Cruzi Risk</i> | No |
| <i>Sub Saharan Africa</i> | No |
| <i>West Nile Virus Risk</i> | No |
| <i>Tropical Virus Risk</i> | No |
| <i>Update Information</i> | This entry was last updated in GDRI Edition 002 Release 01 |

Cocos (Keeling) Islands

| | |
|-------------------------------|---|
| <i>Malaria</i> | No |
| <i>Trypanosoma Cruzi Risk</i> | No |
| <i>Sub Saharan Africa</i> | No |
| <i>West Nile Virus Risk</i> | No |
| <i>Tropical Virus Risk</i> | No |
| <i>Update Information</i> | This entry was last updated in GDRI Edition 002 Release 01 |

Colombia

| | |
|-------------------------------|---|
| <i>Malaria</i> | Yes Malaria is present throughout the year. High risk in Choco, Antioquia, Cordoba, Narino and the Amazon (Vichada, Guaviare, Vaupes, Guainia and Amazonas). Low to no risk in all other areas including the cities of Bogota and Cartagena |
| <i>Malaria Risk Category</i> | B |
| <i>Previous Malaria Risk</i> | Yes all year whole country until Feb 2015 |
| <i>Trypanosoma Cruzi Risk</i> | Yes |
| <i>Sub Saharan Africa</i> | No |
| <i>West Nile Virus Risk</i> | No |
| <i>Tropical Virus Risk</i> | Yes Chikungunya virus, Dengue virus, Yellow Fever and Zika virus |

Malarial Map



This map is only intended as a guide and is not exact. The map must always be used in conjunction with the malaria advice text. Map downloaded from <http://www.fitfortravel.nhs.uk> on 27 June 2017.

Update Information This entry was last updated in
GDRI Edition 002 Release 33

Comoros

| | |
|-------------------------------|---|
| <i>Malaria</i> | Yes All year in whole country |
| <i>Malaria Risk Category</i> | A |
| <i>Trypanosoma Cruzi Risk</i> | No |
| <i>Sub Saharan Africa</i> | No |
| <i>West Nile Virus Risk</i> | No |
| <i>Tropical Virus Risk</i> | Yes Chikungunya Virus |
| <i>Update Information</i> | This entry was last updated in GDRI Edition 002 Release 01 |

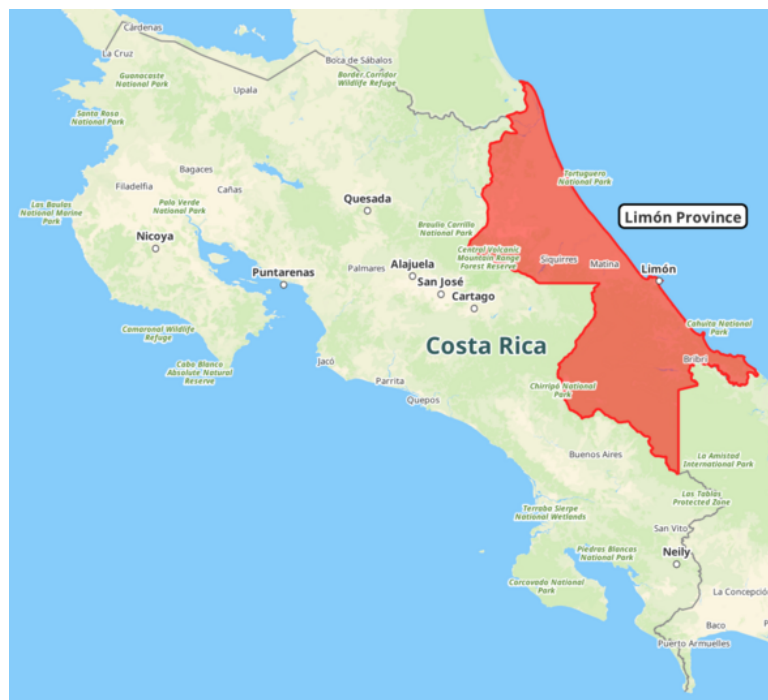
Cook Islands

| | |
|--------------------------|----|
| <i>Malaria</i> | No |
| <i>Trypanosoma Cruzi</i> | No |

| | |
|-----------------------------|---|
| <i>Risk</i> | |
| <i>Sub Saharan Africa</i> | No |
| <i>West Nile Virus Risk</i> | No |
| <i>Tropical Virus Risk</i> | Yes Chikungunya Virus, Dengue Virus and Zika Virus |
| <i>Update Information</i> | This entry was last updated in GDRI Edition 002 Release 18 |

Costa Rica

| | |
|-------------------------------|--|
| <i>Malaria</i> | Yes All year in Limón Province but not in the city of Limón (Puerto Limón). The risk area is shaded red on the map. |
| <i>Malaria Risk Category</i> | B |
| <i>Previous Malaria Risk</i> | Yes, all year in whole country until December 2011. All year in the Provinces of Alajuela and Limón between January 2012 and December 2024. |
| <i>Trypanosoma Cruzi Risk</i> | Yes |
| <i>Sub Saharan Africa</i> | No |
| <i>West Nile Virus Risk</i> | No |
| <i>Tropical Virus Risk</i> | Yes Chikungunya Virus, Dengue Virus and Zika Virus |
| <i>Information</i> | Map data ©Maptiler ©OpenStreetMap contributors |



| | |
|---------------------------|---|
| <i>Update Information</i> | This entry was last updated in GDRI Edition 002 Release 49 |
|---------------------------|---|

Cote D'Ivoire

| | |
|--------------------------------------|---|
| <i>Malaria</i> | Yes All year in whole country |
| <i>Malaria Risk Category</i> | A |
| <i>Trypanosoma Cruzi Risk</i> | No |
| <i>Sub Saharan Africa</i> | Yes |
| <i>West Nile Virus Risk</i> | No |
| <i>Tropical Virus Risk</i> | Yes - Dengue Virus, Yellow Fever and Zika Virus |
| <i>Viral Haemorrhagic Fever Risk</i> | Yes |
| <i>Update Information</i> | This entry was last updated in GDRI Edition 002 Release 33 |

Croatia

| | |
|-------------------------------|--|
| <i>Malaria</i> | No |
| <i>Trypanosoma Cruzi Risk</i> | No |
| <i>Sub Saharan Africa</i> | No |
| <i>West Nile Virus Risk</i> | Yes Donors who have visited between 1st May and the 30th November must have the WNV Donor Selection Guideline applied. |
| <i>Tropical Virus Risk</i> | No |
| <i>Update Information</i> | This entry was last updated in GDRI Edition 002 Release 01 |

Cuba

| | |
|-------------------------------|---|
| <i>Malaria</i> | No |
| <i>Trypanosoma Cruzi Risk</i> | No |
| <i>Sub Saharan Africa</i> | No |
| <i>West Nile Virus Risk</i> | No |
| <i>Tropical Virus Risk</i> | Yes Dengue Virus and Zika Virus |
| <i>Update Information</i> | This entry was last updated in GDRI Edition 002 Release 38 |

Curacao

| | |
|----------------|----|
| <i>Malaria</i> | No |
|----------------|----|

| | |
|-------------------------------|--|
| <i>Trypanosoma Cruzi Risk</i> | No |
| <i>Sub Saharan Africa</i> | No |
| <i>West Nile Virus Risk</i> | No |
| <i>Tropical Virus Risk</i> | Yes Zika Virus |
| <i>Update Information</i> | This entry was last updated in GDRi Edition 002 Release 02 |

Cyprus

| | |
|-------------------------------|--|
| <i>Malaria</i> | No |
| <i>Trypanosoma Cruzi Risk</i> | No |
| <i>Sub Saharan Africa</i> | No |
| <i>West Nile Virus Risk</i> | Yes Donors who have visited between 1st May and the 30th November must have the WNV Donor Selection Guideline applied. |
| <i>Tropical Virus Risk</i> | No |
| <i>Update Information</i> | This entry was last updated in GDRi Edition 002 Release 18 Issue 002 |

Czech Republic

| | |
|-------------------------------|--|
| <i>Malaria</i> | No |
| <i>Trypanosoma Cruzi Risk</i> | No |
| <i>Sub Saharan Africa</i> | No |
| <i>West Nile Virus Risk</i> | No |
| <i>Tropical Virus Risk</i> | No |
| <i>Update Information</i> | This entry was last updated in GDRi Edition 002 Release 01 |

Denmark

| | |
|-------------------------------|----|
| <i>Malaria</i> | No |
| <i>Trypanosoma Cruzi Risk</i> | No |
| <i>Sub Saharan Africa</i> | No |

| | |
|-----------------------------|---|
| <i>West Nile Virus Risk</i> | No |
| <i>Tropical Virus Risk</i> | No |
| <i>Update Information</i> | This entry was last updated in GDRI Edition 002 Release 01 |

Diego Garcia

| | |
|-------------------------------|---|
| <i>Malaria</i> | No |
| <i>Trypanosoma Cruzi Risk</i> | No |
| <i>Sub Saharan Africa</i> | No |
| <i>West Nile Virus Risk</i> | No |
| <i>Tropical Virus Risk</i> | No |
| <i>Update Information</i> | This entry was last updated in GDRI Edition 002 Release 01 |

Djibouti

| | |
|-------------------------------|---|
| <i>Malaria</i> | Yes All year in whole country |
| <i>Malaria Risk Category</i> | A |
| <i>Trypanosoma Cruzi Risk</i> | No |
| <i>Sub Saharan Africa</i> | Yes |
| <i>West Nile Virus Risk</i> | No |
| <i>Tropical Virus Risk</i> | Yes Dengue |
| <i>Update Information</i> | This entry was last updated in GDRI Edition 002 Release 01 |

Dominica

| | |
|-------------------------------|----|
| <i>Malaria</i> | No |
| <i>Trypanosoma Cruzi Risk</i> | No |
| <i>Sub Saharan Africa</i> | No |
| <i>West Nile Virus Risk</i> | No |

Tropical Virus Risk **Yes** Chikungunya Virus, Dengue and Zika Virus

Update Information This entry was last updated in
GDRI Edition 002 Release 03

Dominican Republic

Malaria **Yes**
All year in whole country

*Malaria Risk
Category* **A**

*Trypanosoma Cruzi
Risk* No

Sub Saharan Africa No

West Nile Virus Risk No

Tropical Virus Risk **Yes** Chikungunya, Dengue and Zika virus

Update Information This entry was last updated in
GDRI Edition 002 Release 02

East Timor

Malaria **Yes**
All year in whole country

*Malaria Risk
Category* **A**

*Trypanosoma Cruzi
Risk* No

Sub Saharan Africa No

West Nile Virus Risk No

Tropical Virus Risk **Yes** Chikungunya Virus and Dengue Virus

Update Information This entry was last updated in
GDRI Edition 002 Release 18

Ecuador

Malaria **Yes**
All year in most of the country.

Visitors to Guayaquil, Quito, and other cities in the inter-Andean region and the Galapagos Islands, accept.

*Malaria Risk
Category* **B**

Previous Malaria Risk Yes all year whole country until Feb 2015

| | |
|-------------------------------|---|
| <i>Trypanosoma Cruzi</i> Risk | Yes |
| <i>Sub Saharan Africa</i> | No |
| <i>West Nile Virus Risk</i> | No |
| <i>Tropical Virus Risk</i> | Yes Chikungunya virus, Dengue virus, Yellow Fever and Zika virus |

Malarial Map



This map is only intended as a guide and is not exact. The map must always be used in conjunction with the malaria advice text. Map downloaded from <http://www.fitfortravel.nhs.uk> on 03 February 2015.

| | |
|---------------------------|---|
| <i>Update Information</i> | This entry was last updated in GDRI Edition 002 Release 33 |
|---------------------------|---|

Egypt

| | |
|-------------------------------|---|
| <i>Malaria</i> | No |
| <i>Previous Malaria Risk</i> | Yes all year whole country until Feb 1996 Yes Jun-Oct in El Faiyum region until May 2012 |
| <i>Trypanosoma Cruzi</i> Risk | No |
| <i>Sub Saharan Africa</i> | No |
| <i>West Nile Virus Risk</i> | No |
| <i>Tropical Virus Risk</i> | Yes Dengue Virus |
| <i>Update Information</i> | This entry was last updated in GDRI Edition 002 Release 43 |

El Salvador

| | |
|-------------------------------|--|
| <i>Malaria</i> | No |
| <i>Previous Malaria Risk</i> | Yes Until September 2006: All year whole country October 2006 to May 2021: All year in Santa Ana Province and the borders with Guatemala and Honduras |
| <i>Trypanosoma Cruzi Risk</i> | Yes |
| <i>Sub Saharan Africa</i> | No |
| <i>West Nile Virus Risk</i> | No |
| <i>Tropical Virus Risk</i> | Yes Chikungunya, Dengue and Zika virus |
| <i>Update Information</i> | This entry was last updated in GDRI Edition 002 Release 32 |

Equatorial Guinea

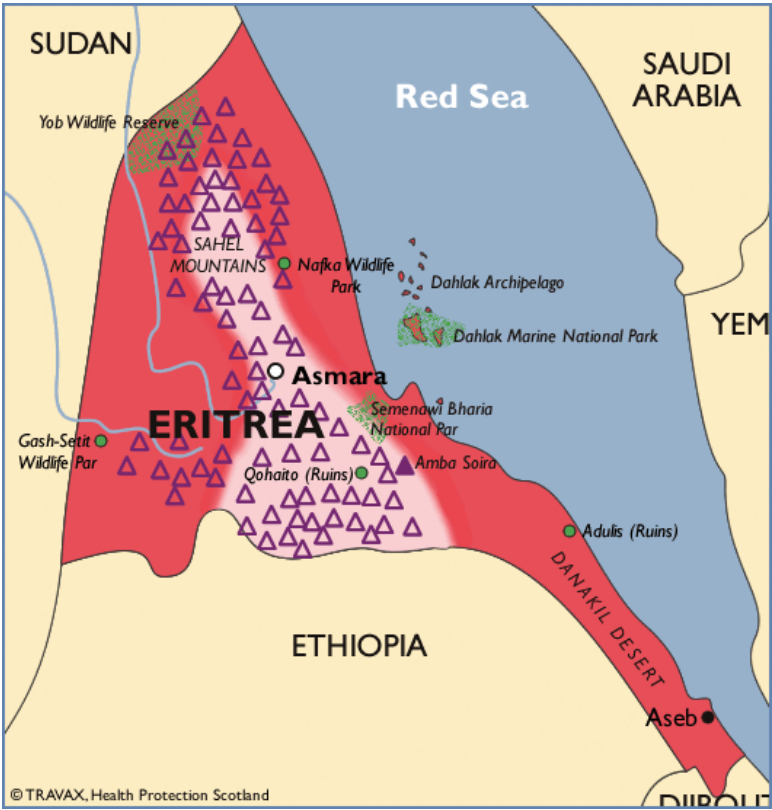
| | |
|--------------------------------------|---|
| <i>Malaria</i> | Yes All year in whole country |
| <i>Malaria Risk Category</i> | A |
| <i>Trypanosoma Cruzi Risk</i> | No |
| <i>Sub Saharan Africa</i> | Yes |
| <i>West Nile Virus Risk</i> | No |
| <i>Tropical Virus Risk</i> | Yes Chikungunya Virus and Yellow Fever |
| <i>Viral Haemorrhagic Fever Risk</i> | Yes Marburg Fever outbreak (whole country): February to June 2023 |
| <i>Update Information</i> | This entry was last updated in GDRI Edition 002 Release 43 |

Eritrea

| | |
|-------------------------------|---|
| <i>Malaria</i> | Yes All year in whole country, visitors to Asmara and the central highlands only, accept. |
| <i>Malaria Risk Category</i> | B |
| <i>Previous Malaria Risk</i> | Yes all year whole country until Sept 2015 |
| <i>Trypanosoma Cruzi Risk</i> | No |
| <i>Sub Saharan Africa</i> | Yes |
| <i>West Nile Virus Risk</i> | No |

Tropical Virus Risk **Yes** Dengue Virus

Malarial Map



This map is only intended as a guide and is not exact. The map must always be used in conjunction with the malaria advice text. Map downloaded from <http://www.fitfortravel.nhs.uk> on 23 June 2017.

Update Information This entry was last updated in:
GDRI Edition 002 Release 44

Estonia

| | |
|------------------------|---|
| Malaria | No |
| Trypanosoma Cruzi Risk | No |
| Sub Saharan Africa | No |
| West Nile Virus Risk | No |
| Tropical Virus Risk | No |
| Update Information | This entry was last updated in GDRI Edition 002 Release 01 |

Eswatini (formerly known as Swaziland)

| | |
|---------|--|
| Malaria | Yes |
| | All year in most of the country. Visitors to airport of Manzine and western half of country only, accept. |

| | |
|-------------------------------|--|
| <i>Malaria Risk Category</i> | B |
| <i>Previous Malaria Risk</i> | Yes all year whole country until Dec 2011 |
| <i>Trypanosoma Cruzi Risk</i> | No |
| <i>Sub Saharan Africa</i> | No |
| <i>West Nile Virus Risk</i> | No |
| <i>Tropical Virus Risk</i> | Yes Chikungunya Virus, Dengue Virus and Zika Virus |
| <i>Update Information</i> | This entry was last updated in GDRI Edition 002 Release 35 |

Ethiopia

| | |
|-------------------------------|---|
| <i>Malaria</i> | Yes All year in whole country. Visitors to city of Addis Ababa only, accept |
| <i>Malaria Risk Category</i> | B |
| <i>Previous Malaria Risk</i> | Yes all year whole country until Sept 2006 |
| <i>Trypanosoma Cruzi Risk</i> | No |
| <i>Sub Saharan Africa</i> | Yes |
| <i>West Nile Virus Risk</i> | No |
| <i>Tropical Virus Risk</i> | Yes Chikungunya Virus, Dengue Virus and Yellow Fever |
| <i>Update Information</i> | This entry was last updated in GDRI Edition 002 Release 33 |

Falkland Islands (Islas Malvinas)

| | |
|-------------------------------|--|
| <i>Malaria</i> | No |
| <i>Trypanosoma Cruzi Risk</i> | No |
| <i>Sub Saharan Africa</i> | No |
| <i>West Nile Virus Risk</i> | No |
| <i>Tropical Virus Risk</i> | No |
| <i>Update Information</i> | This entry was last updated in GDRI Edition 002 Release 01 |

Faroe Islands

| | |
|----------------|----|
| <i>Malaria</i> | No |
|----------------|----|

| | |
|-------------------------------|--|
| <i>Trypanosoma Cruzi Risk</i> | No |
| <i>Sub Saharan Africa</i> | No |
| <i>West Nile Virus Risk</i> | No |
| <i>Tropical Virus Risk</i> | No |
| <i>Update Information</i> | This entry was last updated in GDRI Edition 002 Release 01 |

Fiji

| | |
|-------------------------------|---|
| <i>Malaria</i> | No |
| <i>Trypanosoma Cruzi Risk</i> | No |
| <i>Sub Saharan Africa</i> | No |
| <i>West Nile Virus Risk</i> | No |
| <i>Tropical Virus Risk</i> | Yes Chikungunya virus, Dengue virus and Zika virus |
| <i>Update Information</i> | This entry was last updated in GDRI Edition 002 Release 17. |

Finland

| | |
|-------------------------------|--|
| <i>Malaria</i> | No |
| <i>Trypanosoma Cruzi Risk</i> | No |
| <i>Sub Saharan Africa</i> | No |
| <i>West Nile Virus Risk</i> | No |
| <i>Tropical Virus Risk</i> | No |
| <i>Update Information</i> | This entry was last updated in GDRI Edition 002 Release 01 |

Former Netherlands Antilles

| | |
|-------------------------------|---|
| <i>Malaria</i> | No |
| <i>Trypanosoma Cruzi Risk</i> | No |
| <i>Sub Saharan Africa</i> | No |
| <i>West Nile Virus Risk</i> | No |
| <i>Tropical Virus Risk</i> | Yes Chikungunya virus and Zika Virus |

Update Information This entry was last updated in
GDR I Edition 002 Release 03

France

| | |
|-------------------------------|--|
| <i>Malaria</i> | No |
| <i>Trypanosoma Cruzi Risk</i> | No |
| <i>Sub Saharan Africa</i> | No |
| <i>West Nile Virus Risk</i> | Yes Donors who have visited the following departments (regions) of France, between 1st May and the 30th November, must have the WNV Donor Selection Guideline applied: <ul style="list-style-type: none">• Alpes-Maritimes• Bouches-du-Rhône• Charente• Charente-Maritime• Gironde• Haute-Garonne• Hautes-Pyrénées• Hérault• Pyrénées-Orientales• Var |

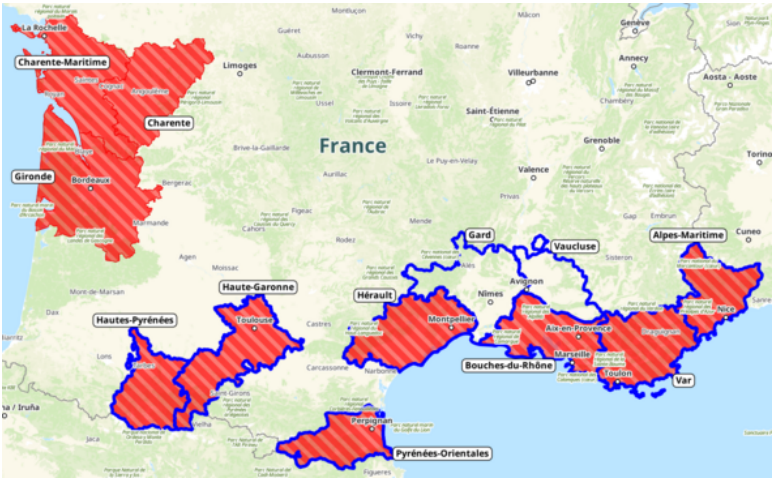
These regions are shaded in red on the map.

| | |
|----------------------------|--|
| <i>Tropical Virus Risk</i> | Yes Dengue Virus All year in the departments (regions) of: |
|----------------------------|--|

- Alpes-Maritimes
- Bouches-du-Rhône
- Gard
- Haute-Garonne
- Hautes-Pyrénées
- Hérault
- Pyrénées-Orientales
- Var
- Vaucluse

These regions are outlined in blue on the map.

Information Map data ©MapTiler ©OpenStreetMap contributors



Update Information

This entry was last updated in
GDRI Edition 002 Release 47

French Guiana

| | |
|-------------------------------|--|
| <i>Malaria</i> | Yes All year in the area west of the Mana river and south east of the other main river systems. Visitors to Cayenne, Devils Islands and the central area of the country only, accept. |
| <i>Malaria Risk Category</i> | B |
| <i>Previous Malaria Risk</i> | Yes all year whole country until Sept 2015 |
| <i>Trypanosoma Cruzi Risk</i> | Yes |
| <i>Sub Saharan Africa</i> | No |
| <i>West Nile Virus Risk</i> | No |
| <i>Tropical Virus Risk</i> | Yes Chikungunya Virus, Dengue Virus, Yellow Fever and Zika Virus |

Malarial Map



This map is only intended as a guide and is not exact. The map must always be used in conjunction with the malaria advice text. Map downloaded from <http://www.fitfortravel.nhs.uk> on 01 October 2015.

| | |
|---------------------------|--|
| <i>Update Information</i> | This entry was last updated in: GDRI Edition 002 Release 44 |
|---------------------------|--|

French Polynesia

| | |
|----------------|----|
| <i>Malaria</i> | No |
|----------------|----|

| | |
|-------------------------------|---|
| <i>Trypanosoma Cruzi Risk</i> | No |
| <i>Sub Saharan Africa</i> | No |
| <i>West Nile Virus Risk</i> | No |
| <i>Tropical Virus Risk</i> | Yes Chikungunya Virus, Dengue Virus and Zika Virus |
| <i>Update Information</i> | This entry was last updated in GDRI Edition 002 Release 18 |

French Southern Territories and Antarctic Lands

| | |
|-------------------------------|---|
| <i>Malaria</i> | No |
| <i>Trypanosoma Cruzi Risk</i> | No |
| <i>Sub Saharan Africa</i> | No |
| <i>West Nile Virus Risk</i> | No |
| <i>Tropical Virus Risk</i> | No |
| <i>Update Information</i> | This entry was last updated in GDRI Edition 002 Release 01 |

Gabon

| | |
|-------------------------------|---|
| <i>Malaria</i> | Yes All year in whole country |
| <i>Malaria Risk Category</i> | A |
| <i>Trypanosoma Cruzi Risk</i> | No |
| <i>Sub Saharan Africa</i> | Yes |
| <i>West Nile Virus Risk</i> | No |
| <i>Tropical Virus Risk</i> | Yes Chikungunya Virus, Dengue Virus, Yellow Fever and Zika Virus |
| <i>Update Information</i> | This entry was last updated in GDRI Edition 002 Release 33 |

Gambia (The)

| | |
|-------------------------------|--|
| <i>Malaria</i> | Yes All year in whole country. |
| <i>Malaria Risk Category</i> | A |
| <i>Trypanosoma Cruzi Risk</i> | No |
| <i>Sub Saharan Africa</i> | Yes |

| | |
|-----------------------------|--|
| <i>West Nile Virus Risk</i> | No |
| <i>Tropical Virus Risk</i> | Yes Chikungunya Virus, Dengue Virus and Yellow Fever |
| <i>Update Information</i> | This entry was last updated in GDRI Edition 002 Release 42 |

Georgia

| | |
|-------------------------------|---|
| <i>Malaria</i> | Yes June - October in the south-east of the country |
| <i>Malaria Risk Category</i> | C |
| <i>Trypanosoma Cruzi Risk</i> | No |
| <i>Sub Saharan Africa</i> | No |
| <i>West Nile Virus Risk</i> | No |
| <i>Tropical Virus Risk</i> | No |
| <i>Update Information</i> | This entry was last updated in GDRI Edition 002 Release 09 |

Germany

| | |
|-------------------------------|--|
| <i>Malaria</i> | No |
| <i>Trypanosoma Cruzi Risk</i> | No |
| <i>Sub Saharan Africa</i> | No |
| <i>West Nile Virus Risk</i> | Yes Donors who have visited between 1st May and the 30th November must have the WNV Donor Selection Guideline applied. |
| <i>Tropical Virus Risk</i> | No |
| <i>Update Information</i> | This entry was last updated in GDRI Edition 002 Release 26. |

Ghana

| | |
|------------------------------|---|
| <i>Malaria</i> | Yes All year in whole country |
| <i>Malaria Risk Category</i> | A |
| <i>Trypanosoma Cruzi</i> | No |

| | |
|-----------------------------|---|
| <i>Risk</i> | |
| <i>Sub Saharan Africa</i> | Yes |
| <i>West Nile Virus Risk</i> | No |
| <i>Tropical Virus Risk</i> | Yes Dengue Virus and Yellow Fever |
| <i>Update Information</i> | This entry was last updated in GDRI Edition 002 Release 33 |

Gibraltar

| | |
|-----------------------------------|---|
| <i>Malaria</i> | No |
| <i>Trypanosoma Cruzi Risk</i> | No |
| <i>Sub Saharan Africa</i> | No |
| <i>West Nile Virus Risk</i> | No |
| <i>Tropical Virus Risk</i> | No |
| <i>Update Information</i> | This entry was last updated in GDRI Edition 002 Release 01 |

Glorioso Islands

| | |
|-----------------------------------|---|
| <i>Malaria</i> | No |
| <i>Trypanosoma Cruzi Risk</i> | No |
| <i>Sub Saharan Africa</i> | No |
| <i>West Nile Virus Risk</i> | No |
| <i>Tropical Virus Risk</i> | No |
| <i>Update Information</i> | This entry was last updated in GDRI Edition 002 Release 01 |

Golan Heights

| | |
|-----------------------------------|----|
| <i>Malaria</i> | No |
| <i>Trypanosoma Cruzi Risk</i> | No |
| <i>Sub Saharan Africa</i> | No |
| <i>West Nile Virus Risk</i> | No |
| <i>Tropical Virus Risk</i> | No |

Update Information This entry was last updated in
GDRI Edition 002 Release 01

Greece

| | |
|-------------------------------|--|
| <i>Malaria</i> | No |
| <i>Trypanosoma Cruzi Risk</i> | No |
| <i>Sub Saharan Africa</i> | No |
| <i>West Nile Virus Risk</i> | Yes Donors who have visited between 1st May and the 30th November must have the WNV Donor Selection Guideline applied. |
| <i>Tropical Virus Risk</i> | No |
| <i>Update Information</i> | This entry was last updated in GDRI Edition 002 Release 01 |

Greenland

| | |
|-------------------------------|---|
| <i>Malaria</i> | No |
| <i>Trypanosoma Cruzi Risk</i> | No |
| <i>Sub Saharan Africa</i> | No |
| <i>West Nile Virus Risk</i> | No |
| <i>Tropical Virus Risk</i> | No |
| <i>Update Information</i> | This entry was last updated in GDRI Edition 002 Release 01 |

Grenada

| | |
|-------------------------------|---|
| <i>Malaria</i> | No |
| <i>Trypanosoma Cruzi Risk</i> | No |
| <i>Sub Saharan Africa</i> | No |
| <i>West Nile Virus Risk</i> | No |
| <i>Tropical Virus Risk</i> | Yes Chikungunya Virus, Dengue Virus and Zika Virus |
| <i>Update Information</i> | This entry was last updated in GDRI Edition 002 Release 07 |

Guadeloupe

| | |
|-------------------------------|---|
| <i>Malaria</i> | No |
| <i>Trypanosoma Cruzi Risk</i> | No |
| <i>Sub Saharan Africa</i> | No |
| <i>West Nile Virus Risk</i> | No |
| <i>Tropical Virus Risk</i> | Yes Chikungunya, Dengue and Zika virus |
| <i>Update Information</i> | This entry was last updated in GDRI Edition 002 Release 02 |

Guam

| | |
|-------------------------------|---|
| <i>Malaria</i> | No |
| <i>Trypanosoma Cruzi Risk</i> | No |
| <i>Sub Saharan Africa</i> | No |
| <i>West Nile Virus Risk</i> | No |
| <i>Tropical Virus Risk</i> | No |
| <i>Update Information</i> | This entry was last updated in GDRI Edition 002 Release 01 |

Guatemala

| | |
|-------------------------------|---|
| <i>Malaria</i> | Yes All year most of the country. Visitors to Guatemala City, Antigua and Lake Atitlan only, accept. |
| <i>Malaria Risk Category</i> | B |
| <i>Previous Malaria Risk</i> | Yes all year whole country until Dec 2011 |
| <i>Trypanosoma Cruzi Risk</i> | Yes |
| <i>Sub Saharan Africa</i> | No |
| <i>West Nile Virus Risk</i> | No |
| <i>Tropical Virus Risk</i> | Yes Chikungunya, Dengue and Zika virus |
| <i>Update Information</i> | This entry was last updated in GDRI Edition 002 Release 05 |

Guernsey

| | |
|-------------------------------|---|
| <i>Malaria</i> | No |
| <i>Trypanosoma Cruzi Risk</i> | No |
| <i>Sub Saharan Africa</i> | No |
| <i>West Nile Virus Risk</i> | No |
| <i>Tropical Virus Risk</i> | No |
| <i>Update Information</i> | This entry was last updated in GDRI Edition 002 Release 01 |

Guinea

| | |
|--------------------------------------|--|
| <i>Malaria</i> | Yes All year in whole country |
| <i>Malaria Risk Category</i> | A |
| <i>Trypanosoma Cruzi Risk</i> | No |
| <i>Sub Saharan Africa</i> | Yes |
| <i>West Nile Virus Risk</i> | No |
| <i>Tropical Virus Risk</i> | Yes Chikungunya Virus, Dengue Virus and Yellow Fever |
| <i>Viral Haemorrhagic Fever Risk</i> | Yes Ebola outbreak (whole country): December 2013 – June 2016 Ebola outbreak in N'Zérékoré Prefecture: February – June 2021 |
| <i>Update Information</i> | This entry was last updated in GDRI Edition 002 Release 43 |

Guinea-Bissau

| | |
|-------------------------------|---|
| <i>Malaria</i> | Yes All year in whole country |
| <i>Malaria Risk Category</i> | A |
| <i>Trypanosoma Cruzi Risk</i> | No |
| <i>Sub Saharan Africa</i> | Yes |
| <i>West Nile Virus Risk</i> | No |
| <i>Tropical Virus Risk</i> | Yes Yellow Fever and Zika Virus |

Update Information This entry was last updated in:
GDRI Edition 002 Release 44

Guyana

| | |
|-------------------------------|---|
| <i>Malaria</i> | Yes There is a risk of malaria all year for most of the country, visitors to the coast and Georgetown only, accept. |
| <i>Malaria Risk Category</i> | B |
| <i>Previous Malaria Risk</i> | Yes all year whole country until Sept 2015 |
| <i>Trypanosoma Cruzi Risk</i> | Yes |
| <i>Sub Saharan Africa</i> | No |
| <i>West Nile Virus Risk</i> | No |
| <i>Tropical Virus Risk</i> | Yes Chikungunya Virus, Yellow Fever and Zika virus |
| <i>Update Information</i> | This entry was last updated in GDRI Edition 002 Release 33 |

Haiti

| | |
|-------------------------------|---|
| <i>Malaria</i> | Yes All year in whole country |
| <i>Malaria Risk Category</i> | A |
| <i>Trypanosoma Cruzi Risk</i> | No |
| <i>Sub Saharan Africa</i> | No |
| <i>West Nile Virus Risk</i> | No |
| <i>Tropical Virus Risk</i> | Yes Chikungunya Virus and Zika virus |
| <i>Update Information</i> | This entry was last updated in GDRI Edition 002 Release 02 |

Heard and McDonald Islands

| | |
|-------------------------------|----|
| <i>Malaria</i> | No |
| <i>Trypanosoma Cruzi Risk</i> | No |
| <i>Sub Saharan Africa</i> | No |

| | |
|-----------------------------|---|
| <i>West Nile Virus Risk</i> | No |
| <i>Tropical Virus Risk</i> | No |
| <i>Update Information</i> | This entry was last updated in GDRI Edition 002 Release 01 |

Honduras

| | |
|-------------------------------|---|
| <i>Malaria</i> | Yes All year in whole country |
| <i>Malaria Risk Category</i> | A |
| <i>Trypanosoma Cruzi Risk</i> | Yes |
| <i>Sub Saharan Africa</i> | No |
| <i>West Nile Virus Risk</i> | No |
| <i>Tropical Virus Risk</i> | Yes Chikungunya, Dengue and Zika virus |
| <i>Update Information</i> | This entry was last updated in GDRI Edition 002 Release 02 |

Hong Kong (S.A.R.)

| | |
|-------------------------------|---|
| <i>Malaria</i> | No |
| <i>Previous Malaria Risk</i> | Yes all year whole country until Feb 1996 Yes all year rural areas until Sept 2006 |
| <i>Trypanosoma Cruzi Risk</i> | No |
| <i>Sub Saharan Africa</i> | No |
| <i>West Nile Virus Risk</i> | No |
| <i>Tropical Virus Risk</i> | No |
| <i>Update Information</i> | This entry was last updated in GDRI Edition 002 Release 24 |

Howland Island

| | |
|-------------------------------|----|
| <i>Malaria</i> | No |
| <i>Trypanosoma Cruzi Risk</i> | No |

| | |
|-----------------------------|---|
| <i>Sub Saharan Africa</i> | No |
| <i>West Nile Virus Risk</i> | No |
| <i>Tropical Virus Risk</i> | No |
| <i>Update Information</i> | This entry was last updated in GDRI Edition 002 Release 01 |

Hungary

| | |
|-------------------------------|--|
| <i>Malaria</i> | No |
| <i>Trypanosoma Cruzi Risk</i> | No |
| <i>Sub Saharan Africa</i> | No |
| <i>West Nile Virus Risk</i> | Yes Donors who have visited between 1st May and the 30th November must have the WNV Donor Selection Guideline applied. |
| <i>Tropical Virus Risk</i> | No |
| <i>Update Information</i> | This entry was last updated in GDRI Edition 002 Release 01 |

Iceland

| | |
|-------------------------------|---|
| <i>Malaria</i> | No |
| <i>Trypanosoma Cruzi Risk</i> | No |
| <i>Sub Saharan Africa</i> | No |
| <i>West Nile Virus Risk</i> | No |
| <i>Tropical Virus Risk</i> | No |
| <i>Update Information</i> | This entry was last updated in GDRI Edition 002 Release 01 |

India

| | |
|------------------------------|---|
| <i>Malaria</i> | Yes All year in affected areas. Due to the complexity of the distribution the map below should be used: Malaria Map - Current (from January 2021). Visitors to 'Low to no risk' areas (pale pink) only, accept. |
| <i>Malaria Risk Category</i> | B |
| <i>Previous Malaria Risk</i> | Yes all year whole country until May 2012 <u>From June 2012 until December 2020</u> – link to previous malaria map. |

| | |
|------------------------|--|
| Trypanosoma Cruzi Risk | No |
| Sub Saharan Africa | No |
| West Nile Virus Risk | No |
| Tropical Virus Risk | Yes Chikungunya Virus, Dengue Virus and Zika Virus |

Malarial Map



This map shows malaria risk to be applied from January 2021. The map must always be used in conjunction with the malaria advice text. Map downloaded from <http://www.fitfortravel.nhs.uk> on 27 November 2020.

| | |
|--------------------|---|
| Update Information | This entry was last updated in GDRi Edition 002 Release 31. |
|--------------------|---|

India - Previous Malaria Map

Malarial Map



This map shows the malaria risk to be applied from June 2012 to December 2020. Map downloaded from <http://www.fitfortravel.nhs.uk> on 01 October 2015. Adapted with permission. Click the following link to view the latest India Malarial Map <http://www.transfusionguidelines.org.uk/dsg/gdri/guidelines/gc0113-india>

Indonesia

| | |
|-------------------------------|---|
| <i>Malaria</i> | Yes All year in most of the country. Visitors to islands of Bali, Java and the city of Jakarta, accept |
| <i>Malaria Risk Category</i> | B |
| <i>Trypanosoma Cruzi Risk</i> | No |
| <i>Sub Saharan Africa</i> | No |
| <i>West Nile Virus Risk</i> | No |
| <i>Tropical Virus Risk</i> | Yes Chikungunya Virus, Zika Virus and Dengue |
| <i>Update Information</i> | This entry was last updated in GDRI Edition 002 Release 07 |

Iran

| | |
|-------------------------------|---|
| <i>Malaria</i> | Yes Malaria risk exists from March to November in rural Iran south of Kerman City |
| <i>Malaria Risk Category</i> | C |
| <i>Previous Malaria Risk</i> | Yes all year whole country until Feb 1996 |
| <i>Trypanosoma Cruzi Risk</i> | No |
| <i>Sub Saharan Africa</i> | No |
| <i>West Nile Virus Risk</i> | No |
| <i>Tropical Virus Risk</i> | Yes Dengue Virus All year in Hormozgan Province |
| <i>Update Information</i> | This entry was last updated in GDRI Edition 002 Release 45 |

Iraq

| | |
|-------------------------------|--|
| <i>Malaria</i> | Yes Malaria risk May to November in areas north and east of Mosul and Kirkuk Cities along the Turkish and Iranian borders. |
| <i>Malaria Risk Category</i> | C |
| <i>Previous Malaria Risk</i> | Yes all year whole country until Feb 1996 |
| <i>Trypanosoma Cruzi Risk</i> | No |
| <i>Sub Saharan Africa</i> | No |
| <i>West Nile Virus Risk</i> | No |
| <i>Tropical Virus Risk</i> | No |

Malarial Map



This map is only intended as a guide and is not exact. The map must always be used in conjunction with the malaria advice text. Map downloaded from <http://www.fitfortravel.nhs.uk> on 01 October 2015.

Update Information This entry was last updated in
GDRI Edition 002 Release 05

Ireland

| | |
|---|---|
| <i>Malaria</i> | No |
| <i>Trypanosoma Cruzi</i> <i>Risk</i> | No |
| <i>Sub Saharan Africa</i> | No |
| <i>West Nile Virus Risk</i> | No |
| <i>Tropical Virus Risk</i> | No |
| Update Information | This entry was last updated in GDRI Edition 002 Release 01 |

Isle of Man

| | |
|---|----|
| <i>Malaria</i> | No |
| <i>Trypanosoma Cruzi</i> <i>Risk</i> | No |
| <i>Sub Saharan Africa</i> | No |
| <i>West Nile Virus Risk</i> | No |
| <i>Tropical Virus Risk</i> | No |
| Update Information | |

This entry was last updated in
GDRI Edition 002 Release 01

Israel

| | |
|-------------------------------|--|
| <i>Malaria</i> | No |
| <i>Trypanosoma Cruzi Risk</i> | No |
| <i>Sub Saharan Africa</i> | No |
| <i>West Nile Virus Risk</i> | Yes Donors who have visited between 1st May and the 30th November must have the WNV Donor Selection Guideline applied. |
| <i>Tropical Virus Risk</i> | No |
| <i>Update Information</i> | This entry was last updated in GDRI Edition 002 Release 01 |

Italy

| | |
|-------------------------------|--|
| <i>Malaria</i> | No |
| <i>Trypanosoma Cruzi Risk</i> | No |
| <i>Sub Saharan Africa</i> | No |
| <i>West Nile Virus Risk</i> | Yes Donors who have visited between 1st May and 30th November must have the WNV Donor Selection Guideline applied. |
| <i>Tropical Virus Risk</i> | No |
| <i>Update Information</i> | This entry was last updated in GDRI Edition 002 Release 48 |

Jamaica

| | |
|-------------------------------|---|
| <i>Malaria</i> | No |
| <i>Previous Malaria Risk</i> | Yes all year whole country Dec 2006- May 2012 |
| <i>Trypanosoma Cruzi Risk</i> | No |
| <i>Sub Saharan Africa</i> | No |
| <i>West Nile Virus Risk</i> | No |
| <i>Tropical Virus Risk</i> | Yes Chikungunya Virus, Zika virus and Dengue virus |
| <i>Update Information</i> | This entry was last updated in GDRI Edition 002 Release 05 |

Jan Mayen

| | |
|-------------------------------|---|
| <i>Malaria</i> | No |
| <i>Trypanosoma Cruzi Risk</i> | No |
| <i>Sub Saharan Africa</i> | No |
| <i>West Nile Virus Risk</i> | No |
| <i>Tropical Virus Risk</i> | No |
| <i>Update Information</i> | This entry was last updated in GDRI Edition 002 Release 01 |

Japan

| | |
|-------------------------------|---|
| <i>Malaria</i> | No |
| <i>Trypanosoma Cruzi Risk</i> | No |
| <i>Sub Saharan Africa</i> | No |
| <i>West Nile Virus Risk</i> | No |
| <i>Tropical Virus Risk</i> | No |
| <i>Update Information</i> | This entry was last updated in GDRI Edition 002 Release 24 |

Jarvis Island

| | |
|-------------------------------|---|
| <i>Malaria</i> | No |
| <i>Trypanosoma Cruzi Risk</i> | No |
| <i>Sub Saharan Africa</i> | No |
| <i>West Nile Virus Risk</i> | No |
| <i>Tropical Virus Risk</i> | No |
| <i>Update Information</i> | This entry was last updated in GDRI Edition 002 Release 01 |

Jersey

| | |
|--------------------------|----|
| <i>Malaria</i> | No |
| <i>Trypanosoma Cruzi</i> | No |

| | |
|-----------------------------|---|
| <i>Risk</i> | |
| <i>Sub Saharan Africa</i> | No |
| <i>West Nile Virus Risk</i> | No |
| <i>Tropical Virus Risk</i> | No |
| <i>Update Information</i> | This entry was last updated in GDRI Edition 002 Release 01 |

Johnston Atoll

| | |
|-----------------------------------|---|
| <i>Malaria</i> | No |
| <i>Trypanosoma Cruzi Risk</i> | No |
| <i>Sub Saharan Africa</i> | No |
| <i>West Nile Virus Risk</i> | No |
| <i>Tropical Virus Risk</i> | No |
| <i>Update Information</i> | This entry was last updated in GDRI Edition 002 Release 01 |

Jordan

| | |
|-----------------------------------|---|
| <i>Malaria</i> | No |
| <i>Trypanosoma Cruzi Risk</i> | No |
| <i>Sub Saharan Africa</i> | No |
| <i>West Nile Virus Risk</i> | No |
| <i>Tropical Virus Risk</i> | No |
| <i>Update Information</i> | This entry was last updated in GDRI Edition 002 Release 01 |

Kazakhstan

| | |
|-----------------------------------|----|
| <i>Malaria</i> | No |
| <i>Trypanosoma Cruzi Risk</i> | No |
| <i>Sub Saharan Africa</i> | No |
| <i>West Nile Virus Risk</i> | No |
| <i>Tropical Virus Risk</i> | No |

Update Information This entry was last updated in
GDRI Edition 002 Release 01

Kenya

| | |
|-------------------------------|---|
| <i>Malaria</i> | Yes All year in most of the country. Visitors to Nairobi, the highlands (above 2500m) of Central, Eastern, Nyanza, Rift Valley and West Provinces only accept. |
| <i>Malaria Risk Category</i> | B |
| <i>Trypanosoma Cruzi Risk</i> | No |
| <i>Sub Saharan Africa</i> | Yes |
| <i>West Nile Virus Risk</i> | No |
| <i>Tropical Virus Risk</i> | Yes Chikungunya Virus, Dengue Virus and Yellow Fever |
| <i>Update Information</i> | This entry was last updated in GDRI Edition 002 Release 33 |

Kingman Reef

| | |
|-------------------------------|---|
| <i>Malaria</i> | No |
| <i>Trypanosoma Cruzi Risk</i> | No |
| <i>Sub Saharan Africa</i> | No |
| <i>West Nile Virus Risk</i> | No |
| <i>Tropical Virus Risk</i> | No |
| <i>Update Information</i> | This entry was last updated in GDRI Edition 002 Release 01 |

Kiribati

| | |
|-------------------------------|--|
| <i>Malaria</i> | No |
| <i>Trypanosoma Cruzi Risk</i> | No |
| <i>Sub Saharan Africa</i> | No |
| <i>West Nile Virus Risk</i> | No |
| <i>Tropical Virus Risk</i> | Yes Chikungunya virus and Dengue virus. |

Update Information This entry was last updated in
GDRI Edition 002 Release 17.

Kosovo

| | |
|-------------------------------|--|
| <i>Malaria</i> | No |
| <i>Trypanosoma Cruzi Risk</i> | No |
| <i>Sub Saharan Africa</i> | No |
| <i>West Nile Virus Risk</i> | Yes Donors who have visited between 1st May and the 30th November must have the WNV Donor Selection Guideline applied. |
| <i>Tropical Virus Risk</i> | No |
| <i>Update Information</i> | This entry was last updated in GDRI Edition 002 Release 01 |

Kuwait

| | |
|-------------------------------|---|
| <i>Malaria</i> | No |
| <i>Trypanosoma Cruzi Risk</i> | No |
| <i>Sub Saharan Africa</i> | No |
| <i>West Nile Virus Risk</i> | No |
| <i>Tropical Virus Risk</i> | No |
| <i>Update Information</i> | This entry was last updated in GDRI Edition 002 Release 01 |

Kyrgyzstan

| | |
|-------------------------------|--|
| <i>Malaria</i> | No |
| <i>Previous Malaria Risk</i> | Yes All year whole country until December 2016 |
| <i>Trypanosoma Cruzi Risk</i> | No |
| <i>Sub Saharan Africa</i> | No |
| <i>West Nile Virus Risk</i> | No |
| <i>Tropical Virus Risk</i> | No |
| <i>Update Information</i> | |

This entry was last updated in
GDRI Edition 002 Release 32

Laos

| | |
|-------------------------------|--|
| <i>Malaria</i> | Yes All year in most of the country. Visitors to Vientiane, Bokeo, Houaphanh only, accept |
| <i>Malaria Risk Category</i> | B |
| <i>Trypanosoma Cruzi Risk</i> | No |
| <i>Sub Saharan Africa</i> | No |
| <i>West Nile Virus Risk</i> | No |
| <i>Tropical Virus Risk</i> | Yes Chikungunya Virus, Dengue Virus and Zika Virus |
| <i>Update Information</i> | This entry was last updated in GDRI Edition 002 Release 24 |

Latvia

| | |
|-------------------------------|---|
| <i>Malaria</i> | No |
| <i>Trypanosoma Cruzi Risk</i> | No |
| <i>Sub Saharan Africa</i> | No |
| <i>West Nile Virus Risk</i> | No |
| <i>Tropical Virus Risk</i> | No |
| <i>Update Information</i> | This entry was last updated in GDRI Edition 002 Release 01 |

Lebanon

| | |
|-------------------------------|---|
| <i>Malaria</i> | No |
| <i>Trypanosoma Cruzi Risk</i> | No |
| <i>Sub Saharan Africa</i> | No |
| <i>West Nile Virus Risk</i> | No |
| <i>Tropical Virus Risk</i> | No |
| <i>Update Information</i> | This entry was last updated in GDRI Edition 002 Release 01 |

Leeward Islands (Caribbean)

| | |
|-------------------------------|--|
| <i>Malaria</i> | No |
| <i>Trypanosoma Cruzi Risk</i> | No |
| <i>Sub Saharan Africa</i> | No |
| <i>West Nile Virus Risk</i> | No |
| <i>Tropical Virus Risk</i> | Yes - most islands in the Leeward Islands (Caribbean) have a Tropical Virus Risk. Please look under the individual island's name for the appropriate GDRI entry e.g. Montserrat, Guadeloupe, Saint Martin, etc for more detailed information. |
| <i>Update Information</i> | This entry was last updated in GDRI Edition 002 Release 07 |

Lesotho

| | |
|-------------------------------|--|
| <i>Malaria</i> | No |
| <i>Trypanosoma Cruzi Risk</i> | No |
| <i>Sub Saharan Africa</i> | Yes |
| <i>West Nile Virus Risk</i> | No |
| <i>Tropical Virus Risk</i> | No |
| <i>Update Information</i> | This entry was last updated in GDRI Edition 002 Release 01 |

Lesser Antilles

| | |
|-------------------------------|---|
| <i>Malaria</i> | No |
| <i>Trypanosoma Cruzi Risk</i> | No |
| <i>Sub Saharan Africa</i> | No |
| <i>West Nile Virus Risk</i> | No |
| <i>Tropical Virus Risk</i> | Yes - most islands in the Lesser Antilles have a Tropical Virus Risk. Please look under the individual island's name for the appropriate GDRI entry e.g. Barbados, Grenada etc for more detailed information. |
| <i>Update Information</i> | This entry was last updated in GDRI Edition 002 Release 07 |

Liberia

| | |
|----------------|---|
| <i>Malaria</i> | Yes All year in whole country |
|----------------|---|

| | |
|--------------------------------------|--|
| <i>Malaria Risk Category</i> | A |
| <i>Trypanosoma Cruzi Risk</i> | No |
| <i>Sub Saharan Africa</i> | Yes |
| <i>West Nile Virus Risk</i> | No |
| <i>Tropical Virus Risk</i> | Yes Chikungunya Virus and Yellow Fever |
| <i>Viral Haemorrhagic Fever Risk</i> | Yes Ebola outbreak (whole country): March 2014 – June 2016 |
| <i>Update Information</i> | This entry was last updated in GDRI Edition 002 Release 38 |

Libya

| | |
|-------------------------------|--|
| <i>Malaria</i> | No |
| <i>Previous Malaria Risk</i> | Yes all year south west of country until Feb 1996 Yes (Feb-Aug) south west of country until Sept 2006 |
| <i>Trypanosoma Cruzi Risk</i> | No |
| <i>Sub Saharan Africa</i> | No |
| <i>West Nile Virus Risk</i> | No |
| <i>Tropical Virus Risk</i> | No |
| <i>Update Information</i> | This entry was last updated in GDRI Edition 002 Release 05 |

Liechtenstein

| | |
|-------------------------------|---|
| <i>Malaria</i> | No |
| <i>Trypanosoma Cruzi Risk</i> | No |
| <i>Sub Saharan Africa</i> | No |
| <i>West Nile Virus Risk</i> | No |
| <i>Tropical Virus Risk</i> | No |
| <i>Update Information</i> | This entry was last updated in GDRI Edition 002 Release 01 |

Lithuania

| | |
|-------------------------------|---|
| <i>Malaria</i> | No |
| <i>Trypanosoma Cruzi Risk</i> | No |
| <i>Sub Saharan Africa</i> | No |
| <i>West Nile Virus Risk</i> | No |
| <i>Tropical Virus Risk</i> | No |
| <i>Update Information</i> | This entry was last updated in GDRI Edition 002 Release 01 |

Luxembourg

| | |
|-------------------------------|---|
| <i>Malaria</i> | No |
| <i>Trypanosoma Cruzi Risk</i> | No |
| <i>Sub Saharan Africa</i> | No |
| <i>West Nile Virus Risk</i> | No |
| <i>Tropical Virus Risk</i> | No |
| <i>Update Information</i> | This entry was last updated in GDRI Edition 002 Release 01 |

Macau (S.A.R.)

| | |
|-------------------------------|---|
| <i>Malaria</i> | No |
| <i>Trypanosoma Cruzi Risk</i> | No |
| <i>Sub Saharan Africa</i> | No |
| <i>West Nile Virus Risk</i> | No |
| <i>Tropical Virus Risk</i> | No |
| <i>Update Information</i> | This entry was last updated in GDRI Edition 002 Release 24 |

Madagascar

| | |
|------------------------------|---|
| <i>Malaria</i> | Yes All year in whole country |
| <i>Malaria Risk Category</i> | A |

| | |
|-------------------------------|--|
| <i>Trypanosoma Cruzi Risk</i> | No |
| <i>Sub Saharan Africa</i> | No |
| <i>West Nile Virus Risk</i> | No |
| <i>Tropical Virus Risk</i> | Yes Chikungunya Virus |
| <i>Update Information</i> | This entry was last updated in GDRI Edition 002 Release 01 |

Malawi

| | |
|-------------------------------|--|
| <i>Malaria</i> | Yes All year in whole country. |
| <i>Malaria Risk Category</i> | A |
| <i>Trypanosoma Cruzi Risk</i> | No |
| <i>Sub Saharan Africa</i> | Yes |
| <i>West Nile Virus Risk</i> | No |
| <i>Tropical Virus Risk</i> | Yes Chikungunya Virus |
| <i>Update Information</i> | This entry was last updated in GDRI Edition 002 Release 01 |

Malaysia

| | |
|-------------------------------|---|
| <i>Malaria</i> | Yes All year in central Peninsular Malaysia and the Taman Negara National Park and all provinces of Sabah and Sarawak (on the island of Borneo) |
| <i>Malaria Risk Category</i> | B |
| <i>Previous Malaria Risk</i> | Yes all year whole country until Feb 1996 Yes all year in rural areas until Sept 2006 |
| <i>Trypanosoma Cruzi Risk</i> | No |
| <i>Sub Saharan Africa</i> | No |
| <i>West Nile Virus Risk</i> | No |
| <i>Tropical Virus Risk</i> | Yes Chikungunya Virus, Dengue Virus and Zika Virus |

Malaria Maps



This map is only intended as a guide and is not exact. The map must always be used in conjunction with the malaria advice text. Map downloaded from <http://www.fitfortravel.nhs.uk> on 27 June 2017.



This map is only intended as a guide and is not exact. The map must always be used in conjunction with the malaria advice text. Map downloaded from <http://www.fitfortravel.nhs.uk> on 27 June 2017.



This map is only intended as a guide and is not exact. The map must always be used in conjunction with the malaria advice text. Map downloaded from <http://www.fitfortravel.nhs.uk> on 27 June 2017.

Update Information This entry was last updated in
GDRI Edition 002 Release 24

Maldives

| | |
|-------------------------------|---|
| <i>Malaria</i> | No |
| <i>Previous Malaria Risk</i> | Yes all years whole country Oct 2009 |
| <i>Trypanosoma Cruzi Risk</i> | No |
| <i>Sub Saharan Africa</i> | No |
| <i>West Nile Virus Risk</i> | No |
| <i>Tropical Virus Risk</i> | Yes Chikungunya Virus, Dengue Virus and Zika Virus |
| <i>Update Information</i> | This entry was last updated in GDRI Edition 002 Release 18 |

Mali

| | |
|--------------------------------------|--|
| <i>Malaria</i> | Yes All year in whole country |
| <i>Malaria Risk Category</i> | A |
| <i>Trypanosoma Cruzi Risk</i> | No |
| <i>Sub Saharan Africa</i> | Yes |
| <i>West Nile Virus Risk</i> | No |
| <i>Tropical Virus Risk</i> | Yes Chikungunya Virus, Dengue Virus and Yellow Fever |
| <i>Viral Haemorrhagic Fever Risk</i> | Yes |
| <i>Update Information</i> | This entry was last updated in GDRI Edition 002 Release 42 |

Malta

| | |
|-------------------------------|----|
| <i>Malaria</i> | No |
| <i>Trypanosoma Cruzi Risk</i> | No |
| <i>Sub Saharan Africa</i> | No |

| | |
|-----------------------------|---|
| <i>West Nile Virus Risk</i> | No |
| <i>Tropical Virus Risk</i> | No |
| <i>Update Information</i> | This entry was last updated in GDRI Edition 002 Release 01 |

Marshall Islands

| | |
|-------------------------------|--|
| <i>Malaria</i> | No |
| <i>Trypanosoma Cruzi Risk</i> | No |
| <i>Sub Saharan Africa</i> | No |
| <i>West Nile Virus Risk</i> | No |
| <i>Tropical Virus Risk</i> | Yes Chikungunya Virus, Dengue Virus and Zika Virus |
| <i>Update Information</i> | This entry was last updated in GDRI Edition 002 Release 30. |

Martinique

| | |
|-------------------------------|---|
| <i>Malaria</i> | No |
| <i>Trypanosoma Cruzi Risk</i> | No |
| <i>Sub Saharan Africa</i> | No |
| <i>West Nile Virus Risk</i> | No |
| <i>Tropical Virus Risk</i> | Yes Chikungunya, Dengue and Zika virus |
| <i>Update Information</i> | This entry was last updated in GDRI Edition 002 Release 02 |

Mauritania

| | |
|-------------------------------|---|
| <i>Malaria</i> | Yes All year in whole country |
| <i>Malaria Risk Category</i> | A |
| <i>Trypanosoma Cruzi Risk</i> | No |
| <i>Sub Saharan Africa</i> | Yes |
| <i>West Nile Virus Risk</i> | No |

Tropical Virus Risk **Yes** Dengue Virus and Yellow Fever

Update Information This entry was last updated in
GDRI Edition 002 Release 33

Mauritius

Malaria No

Previous Malaria Risk Yes all year whole country until Sept 2006
Yes rural areas of Mauritius Island all year until Dec 2011

Trypanosoma Cruzi Risk No

Sub Saharan Africa No

West Nile Virus Risk No

Tropical Virus Risk **Yes** Chikungunya Virus and Dengue

Update Information This entry was last updated in
GDRI Edition 002 Release 05

Mayotte

Malaria **Yes**
All year in whole country

Malaria Risk Category **A**

Trypanosoma Cruzi Risk No

Sub Saharan Africa No

West Nile Virus Risk No

Tropical Virus Risk **Yes** Chikungunya Virus and Dengue

Update Information This entry was last updated in
GDRI Edition 002 Release 01

Mexico

Malaria **Yes**

Malaria risk is present intermittently in some rural areas not normally visited by tourists. These include some areas in the states of Chiapas, Chihuahua, Durango, Nayarit, Quintana Roo and Sinaloa.

There is no risk of malaria in popular tourist destinations including Acapulco, Mexico City, Cancun, Cozumel and the Mayan Riviera.

| | |
|-------------------------------|---|
| <i>Malaria Risk Category</i> | C |
| <i>Previous Malaria Risk</i> | Yes all year in rural areas until Sept 2006 Yes wide spread (except Cancun) until Dec 2011 |
| <i>Trypanosoma Cruzi Risk</i> | Yes |
| <i>Sub Saharan Africa</i> | No |
| <i>West Nile Virus Risk</i> | No |
| <i>Tropical Virus Risk</i> | Yes Chikungunya, Dengue and Zika virus |

Malarial Map



This map is only intended as a guide and is not exact. The map must always be used in conjunction with the malaria advice text. Map downloaded from <http://www.fitfortravel.nhs.uk> on 01 October 2015.

| | |
|---------------------------|---|
| <i>Update Information</i> | This entry was last updated in GDRI Edition 002 Release 07 |
|---------------------------|---|

Micronesia (Federated States of)

| | |
|-------------------------------|---|
| <i>Malaria</i> | No |
| <i>Trypanosoma Cruzi Risk</i> | No |
| <i>Sub Saharan Africa</i> | No |
| <i>West Nile Virus Risk</i> | No |
| <i>Tropical Virus Risk</i> | Yes Zika Virus |
| <i>Update Information</i> | This entry was last updated in GDRI Edition 002 Release 04 |

Midway Islands

| | |
|-------------------------------|---|
| <i>Malaria</i> | No |
| <i>Trypanosoma Cruzi Risk</i> | No |
| <i>Sub Saharan Africa</i> | No |
| <i>West Nile Virus Risk</i> | No |
| <i>Tropical Virus Risk</i> | No |
| <i>Update Information</i> | This entry was last updated in GDRI Edition 002 Release 01 |

Moldova

| | |
|-------------------------------|---|
| <i>Malaria</i> | No |
| <i>Trypanosoma Cruzi Risk</i> | No |
| <i>Sub Saharan Africa</i> | No |
| <i>West Nile Virus Risk</i> | No |
| <i>Tropical Virus Risk</i> | No |
| <i>Update Information</i> | This entry was last updated in GDRI Edition 002 Release 01 |

Monaco

| | |
|-------------------------------|---|
| <i>Malaria</i> | No |
| <i>Trypanosoma Cruzi Risk</i> | No |
| <i>Sub Saharan Africa</i> | No |
| <i>West Nile Virus Risk</i> | Yes There is also a Tropical Virus risk (Dengue) which should be applied. |
| <i>Tropical Virus Risk</i> | Yes Dengue Virus |
| <i>Update Information</i> | This entry was last updated in GDRI Edition 002 Release 36 |

Mongolia

| | |
|----------------|----|
| <i>Malaria</i> | No |
|----------------|----|

| | |
|-------------------------------|--|
| <i>Trypanosoma Cruzi Risk</i> | No |
| <i>Sub Saharan Africa</i> | No |
| <i>West Nile Virus Risk</i> | No |
| <i>Tropical Virus Risk</i> | No |
| <i>Update Information</i> | This entry was last updated in GDRI Edition 002 Release 01 |

Montenegro

| | |
|-------------------------------|--|
| <i>Malaria</i> | No |
| <i>Trypanosoma Cruzi Risk</i> | No |
| <i>Sub Saharan Africa</i> | No |
| <i>West Nile Virus Risk</i> | Yes Donors who have visited between 1st May and the 30th November must have the WNV Donor Selection Guideline applied. |
| <i>Tropical Virus Risk</i> | No |
| <i>Update Information</i> | This entry was last updated in GDRI Edition 002 Release 01 |

Montserrat

| | |
|-------------------------------|--|
| <i>Malaria</i> | No |
| <i>Trypanosoma Cruzi Risk</i> | No |
| <i>Sub Saharan Africa</i> | No |
| <i>West Nile Virus Risk</i> | No |
| <i>Tropical Virus Risk</i> | Yes Chikungunya Virus and Zika Virus |
| <i>Update Information</i> | This entry was last updated in GDRI Edition 002 Release 08 |

Morocco

| | |
|------------------------------|---|
| <i>Malaria</i> | No |
| <i>Previous Malaria Risk</i> | Yes all year rural areas until Feb 1996 Yes (May-Oct) rural areas until Sept 2006 Yes May-Oct in provinces of Al Hoceima, Taounate, and Taza until Dec 2011 |

| | |
|-------------------------------|--|
| <i>Trypanosoma Cruzi Risk</i> | No |
| <i>Sub Saharan Africa</i> | No |
| <i>West Nile Virus Risk</i> | No |
| <i>Tropical Virus Risk</i> | No |
| <i>Update Information</i> | This entry was last updated in GDRI Edition 002 Release 05 |

Mozambique

| | |
|-------------------------------|--|
| <i>Malaria</i> | Yes All year in whole country |
| <i>Malaria Risk Category</i> | A |
| <i>Trypanosoma Cruzi Risk</i> | No |
| <i>Sub Saharan Africa</i> | Yes |
| <i>West Nile Virus Risk</i> | No |
| <i>Tropical Virus Risk</i> | Yes Dengue |
| <i>Update Information</i> | This entry was last updated in GDRI Edition 002 Release 01 |

Myanmar

| | |
|-------------------------------|--|
| <i>Malaria</i> | Yes All year in whole country. |
| <i>Malaria Risk Category</i> | A |
| <i>Trypanosoma Cruzi Risk</i> | No |
| <i>Sub Saharan Africa</i> | No |
| <i>West Nile Virus Risk</i> | No |
| <i>Tropical Virus Risk</i> | Yes Chikungunya Virus and Dengue |
| <i>Update Information</i> | This entry was last updated in GDRI Edition 002 Release 24 |

Namibia

| | |
|------------------------------|---|
| <i>Malaria</i> | Yes All year in the area north of Windhoek except the narrow coastal strip. |
| <i>Malaria Risk Category</i> | B |

Previous Malaria Risk Yes all year whole country until Feb 1996
Yes all year northern regions until May 2015

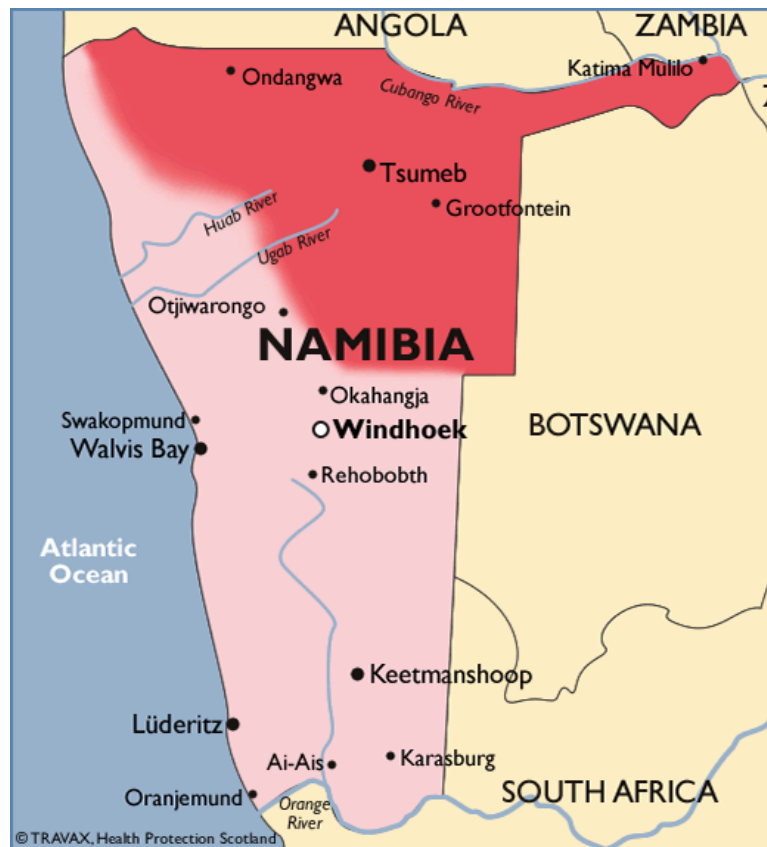
Trypanosoma Cruzi Risk No

Sub Saharan Africa **Yes**

West Nile Virus Risk No

Tropical Virus Risk No

Malarial Map



This map is only intended as a guide and is not exact. The map must always be used in conjunction with the malaria advice text. Map downloaded from <http://www.fitfortravel.nhs.uk> on 08 May 2015.

Update Information This entry was last updated in
GDRI Edition 002 Release 05

Nauru

Malaria No

Trypanosoma Cruzi Risk No

Sub Saharan Africa No

West Nile Virus Risk No

Tropical Virus Risk **Yes** Chikungunya Virus

Update Information This entry was last updated in
GDRI Edition 002 Release 01

Navassa Island

| | |
|-------------------------------|--|
| <i>Malaria</i> | No |
| <i>Trypanosoma Cruzi Risk</i> | No |
| <i>Sub Saharan Africa</i> | No |
| <i>West Nile Virus Risk</i> | No |
| <i>Tropical Virus Risk</i> | No |
| <i>Update Information</i> | This entry was last updated in GDRI Edition 002 Release 01 |

Nepal

| | |
|-------------------------------|--|
| <i>Malaria</i> | Yes All year in low lying areas in the South of the country. Donors who have flown to Kathmandu and stayed within the Himalaya area, accept. Donors who have travelled overland from the Indian border and have travelled in the Southern lower plains along the Indian border, treat as malaria risk. |
| <i>Malaria Risk Category</i> | B |
| <i>Previous Malaria Risk</i> | Yes all year whole country until Sept 2006 |
| <i>Trypanosoma Cruzi Risk</i> | No |
| <i>Sub Saharan Africa</i> | No |
| <i>West Nile Virus Risk</i> | No |
| <i>Tropical Virus Risk</i> | Yes Dengue Virus |
| <i>Update Information</i> | This entry was last updated in GDRI Edition 002 Release 18 |

Netherlands

| | |
|-------------------------------|----|
| <i>Malaria</i> | No |
| <i>Trypanosoma Cruzi Risk</i> | No |
| <i>Sub Saharan Africa</i> | No |
| <i>West Nile Virus Risk</i> | No |
| <i>Tropical Virus Risk</i> | No |

Update Information This entry was last updated in
GDRI Edition 002 Release 33.

New Caledonia

| | |
|-------------------------------|--|
| <i>Malaria</i> | No |
| <i>Trypanosoma Cruzi Risk</i> | No |
| <i>Sub Saharan Africa</i> | No |
| <i>West Nile Virus Risk</i> | No |
| <i>Tropical Virus Risk</i> | Yes Chikungunya virus, Dengue virus and Zika virus |
| <i>Update Information</i> | This entry was last updated in GDRI Edition 002 Release 17. |

New Zealand

| | |
|-------------------------------|---|
| <i>Malaria</i> | No |
| <i>Trypanosoma Cruzi Risk</i> | No |
| <i>Sub Saharan Africa</i> | No |
| <i>West Nile Virus Risk</i> | No |
| <i>Tropical Virus Risk</i> | No |
| <i>Update Information</i> | This entry was last updated in GDRI Edition 002 Release 01 |

Nicaragua

| | |
|-------------------------------|--|
| <i>Malaria</i> | Yes All year in most of the country. Visitors to Managua only, accept |
| <i>Malaria Risk Category</i> | B |
| <i>Trypanosoma Cruzi Risk</i> | Yes |
| <i>Sub Saharan Africa</i> | No |
| <i>West Nile Virus Risk</i> | No |
| <i>Tropical Virus Risk</i> | Yes Chikungunya Virus, Dengue and Zika Virus |
| <i>Update Information</i> | |

This entry was last updated in
GDRI Edition 002 Release 02

Niger

| | |
|-------------------------------|---|
| <i>Malaria</i> | Yes All year in whole country |
| <i>Malaria Risk Category</i> | A |
| <i>Trypanosoma Cruzi Risk</i> | No |
| <i>Sub Saharan Africa</i> | Yes |
| <i>West Nile Virus Risk</i> | No |
| <i>Tropical Virus Risk</i> | Yes Dengue Virus and Yellow Fever |
| <i>Update Information</i> | This entry was last updated in GDRI Edition 002 Release 33 |

Nigeria

| | |
|--------------------------------------|---|
| <i>Malaria</i> | Yes All year in whole country |
| <i>Malaria Risk Category</i> | A |
| <i>Trypanosoma Cruzi Risk</i> | No |
| <i>Sub Saharan Africa</i> | Yes |
| <i>West Nile Virus Risk</i> | No |
| <i>Tropical Virus Risk</i> | Yes Chikungunya Virus, Dengue Virus, Yellow Fever and Zika Virus |
| <i>Viral Haemorrhagic Fever Risk</i> | Yes |
| <i>Update Information</i> | This entry was last updated in GDRI Edition 002 Release 43 |

Niue

| | |
|-------------------------------|------------------------------|
| <i>Malaria</i> | No |
| <i>Trypanosoma Cruzi Risk</i> | No |
| <i>Sub Saharan Africa</i> | No |
| <i>West Nile Virus Risk</i> | No |
| <i>Tropical Virus Risk</i> | Yes Chikungunya Virus |

Update Information This entry was last updated in
GDRI Edition 002 Release 01

Norfolk Island

| | |
|-------------------------------|---|
| <i>Malaria</i> | No |
| <i>Trypanosoma Cruzi Risk</i> | No |
| <i>Sub Saharan Africa</i> | No |
| <i>West Nile Virus Risk</i> | No |
| <i>Tropical Virus Risk</i> | No |
| <i>Update Information</i> | This entry was last updated in GDRI Edition 002 Release 01 |

North Korea (Democratic Peoples Republic of)

| | |
|-------------------------------|---|
| <i>Malaria</i> | Yes All year in the de-militarized zone between North and South Korea (Kyunggi-do and Gangwon-do provinces) |
| <i>Malaria Risk Category</i> | C |
| <i>Trypanosoma Cruzi Risk</i> | No |
| <i>Sub Saharan Africa</i> | No |
| <i>West Nile Virus Risk</i> | No |
| <i>Tropical Virus Risk</i> | No |
| <i>Update Information</i> | This entry was last updated in GDRI Edition 002 Release 01 |

North Macedonia

| | |
|-------------------------------|--|
| <i>Malaria</i> | No |
| <i>Trypanosoma Cruzi Risk</i> | No |
| <i>Sub Saharan Africa</i> | No |
| <i>West Nile Virus Risk</i> | Yes Donors who have visited between 1st May and the 30th November must have the WNV Donor Selection Guideline applied. |
| <i>Tropical Virus Risk</i> | No |

Update Information This entry was last updated in
GDRI Edition 002 Release 18

Northern Mariana Islands

| | |
|-------------------------------|---|
| <i>Malaria</i> | No |
| <i>Trypanosoma Cruzi Risk</i> | No |
| <i>Sub Saharan Africa</i> | No |
| <i>West Nile Virus Risk</i> | No |
| <i>Tropical Virus Risk</i> | No |
| <i>Update Information</i> | This entry was last updated in GDRI Edition 002 Release 01 |

Norway

| | |
|-------------------------------|---|
| <i>Malaria</i> | No |
| <i>Trypanosoma Cruzi Risk</i> | No |
| <i>Sub Saharan Africa</i> | No |
| <i>West Nile Virus Risk</i> | No |
| <i>Tropical Virus Risk</i> | No |
| <i>Update Information</i> | This entry was last updated in GDRI Edition 002 Release 01 |

Oman

| | |
|-------------------------------|--|
| <i>Malaria</i> | Yes Risk is restricted to limited foci in remote areas in the north, including Musandam provinces all year. Muscat is normally considered to be malaria free. |
| <i>Malaria Risk Category</i> | C |
| <i>Previous Malaria Risk</i> | Yes all year whole country until Sept 2006 |
| <i>Trypanosoma Cruzi Risk</i> | No |
| <i>Sub Saharan Africa</i> | No |
| <i>West Nile Virus Risk</i> | No |
| <i>Tropical Virus Risk</i> | Yes Dengue Virus |

Update Information This entry was last updated in:
GDRI Edition 002 Release 44

Pakistan

| | |
|-------------------------------|---|
| <i>Malaria</i> | Yes All year in whole country |
| <i>Malaria Risk Category</i> | A |
| <i>Trypanosoma Cruzi Risk</i> | No |
| <i>Sub Saharan Africa</i> | No |
| <i>West Nile Virus Risk</i> | No |
| <i>Tropical Virus Risk</i> | Yes Chikungunya Virus and Dengue |
| <i>Update Information</i> | This entry was last updated in GDRI Edition 002 Release 01 |

Palau

| | |
|-------------------------------|---|
| <i>Malaria</i> | No |
| <i>Trypanosoma Cruzi Risk</i> | No |
| <i>Sub Saharan Africa</i> | No |
| <i>West Nile Virus Risk</i> | No |
| <i>Tropical Virus Risk</i> | Yes Chikungunya Virus and Zika Virus |
| <i>Update Information</i> | This entry was last updated in GDRI Edition 002 Release 42 |

Palmyra Atoll

| | |
|-------------------------------|----|
| <i>Malaria</i> | No |
| <i>Trypanosoma Cruzi Risk</i> | No |
| <i>Sub Saharan Africa</i> | No |
| <i>West Nile Virus Risk</i> | No |
| <i>Tropical Virus Risk</i> | No |
| <i>Update Information</i> | |

This entry was last updated in
GDRI Edition 002 Release 01

Panama

| | |
|-------------------------------|--|
| <i>Malaria</i> | Yes All year in most of the country. Travellers who visited the Canal Zone and Panama City exclusively may be accepted. |
| <i>Malaria Risk Category</i> | B |
| <i>Previous Malaria Risk</i> | Yes all year whole country until Dec 2011 |
| <i>Trypanosoma Cruzi Risk</i> | Yes |
| <i>Sub Saharan Africa</i> | No |
| <i>West Nile Virus Risk</i> | No |
| <i>Tropical Virus Risk</i> | Yes Chikungunya virus, Dengue virus, Yellow Fever and Zika virus |
| <i>Update Information</i> | This entry was last updated in GDRI Edition 002 Release 33 |

Papua New Guinea

| | |
|-------------------------------|---|
| <i>Malaria</i> | Yes All year in whole country |
| <i>Malaria Risk Category</i> | A |
| <i>Trypanosoma Cruzi Risk</i> | No |
| <i>Sub Saharan Africa</i> | No |
| <i>West Nile Virus Risk</i> | No |
| <i>Tropical Virus Risk</i> | Yes Zika Virus |
| <i>Update Information</i> | This entry was last updated in GDRI Edition 002 Release 04 |

Paracel Islands

| | |
|-------------------------------|----|
| <i>Malaria</i> | No |
| <i>Trypanosoma Cruzi Risk</i> | No |
| <i>Sub Saharan Africa</i> | No |

| | |
|-----------------------------|---|
| <i>West Nile Virus Risk</i> | No |
| <i>Tropical Virus Risk</i> | No |
| <i>Update Information</i> | This entry was last updated in GDRI Edition 002 Release 01 |

Paraguay

| | |
|-------------------------------|--|
| <i>Malaria</i> | No |
| <i>Previous Malaria Risk</i> | Yes Until February 1996: all year whole country March 1996 to September 2006: October to May in rural areas From October 2006 to June 2018: all year in the Alto Parana and Caaguazú departments |
| <i>Trypanosoma Cruzi Risk</i> | Yes |
| <i>Sub Saharan Africa</i> | No |
| <i>West Nile Virus Risk</i> | No |
| <i>Tropical Virus Risk</i> | Yes Chikungunya virus, Dengue virus, Yellow Fever and Zika virus |
| <i>Update Information</i> | This entry was last updated in GDRI Edition 002 Release 33 |

Peru

| | |
|-------------------------------|---|
| <i>Malaria</i> | Yes Malaria is present in the country East of the Andes below 2000m. There is virtually no risk above this altitude in the Andes. No risk to the West of the Andes along the Pacific coast (except in the extreme northern coastal area). Travellers to Lima, the Inca trail routes taken by trekkers to Cuzco City, Machu Picchu, and Lake Titicaca can be accepted. |
| <i>Malaria Risk Category</i> | B |
| <i>Previous Malaria Risk</i> | Yes all year whole country until Feb 1996 Yes all year rural areas below 1500m until Sept 2006 |
| <i>Trypanosoma Cruzi Risk</i> | Yes |
| <i>Sub Saharan Africa</i> | No |
| <i>West Nile Virus Risk</i> | No |
| <i>Tropical Virus Risk</i> | Yes Chikungunya Virus, Dengue Virus, Yellow Fever and Zika Virus |

Malarial Map



This map is only intended as a guide and is not exact. The map must always be used in conjunction with the malaria advice text. Map downloaded from <http://www.fitfortravel.nhs.uk> on 01 October 2015.

Update Information This entry was last updated in
GDRI Edition 002 Release 33

Philippines

Malaria **Yes**
All year in affected areas. Due to the complexity of the distribution the map below should be used. Visitors to 'Low to no risk' areas (pale pink) only, accept.

Malaria Risk Category **B**

Previous Malaria Risk Yes all year whole country until Feb 1996

Trypanosoma Cruzi Risk No

Sub Saharan Africa No

West Nile Virus Risk No

Tropical Virus Risk **Yes** Chikungunya Virus, Zika virus and Dengue virus

Malarial Map



This map is only intended as a guide and is not exact. The map must always be used in conjunction with the malaria advice text. Map downloaded from <http://www.fitfortravel.nhs.uk> on 23 June 2017..

Update Information This entry was last updated in
GDRl Edition 002 Release 09

Pitcairn Islands

| | |
|------------------------|---|
| Malaria | No |
| Trypanosoma Cruzi Risk | No |
| Sub Saharan Africa | No |
| West Nile Virus Risk | No |
| Tropical Virus Risk | No |
| Update Information | This entry was last updated in GDRl Edition 002 Release 01 |

Poland

| | |
|---------|----|
| Malaria | No |
|---------|----|

| | |
|-------------------------------|---|
| <i>Trypanosoma Cruzi Risk</i> | No |
| <i>Sub Saharan Africa</i> | No |
| <i>West Nile Virus Risk</i> | No |
| <i>Tropical Virus Risk</i> | No |
| <i>Update Information</i> | This entry was last updated in GDRI Edition 002 Release 01 |

Polynesia

See See specific island(s) visited

Portugal

| | |
|-------------------------------|---|
| <i>Malaria</i> | No |
| <i>Trypanosoma Cruzi Risk</i> | No |
| <i>Sub Saharan Africa</i> | No |
| <i>West Nile Virus Risk</i> | No |
| <i>Tropical Virus Risk</i> | No |
| <i>Update Information</i> | This entry was last updated in GDRI Edition 002 Release 44 |

Puerto Rico

| | |
|-------------------------------|---|
| <i>Malaria</i> | No N.B. there is a Puerto Rico airport in Bolivia. |
| <i>Trypanosoma Cruzi Risk</i> | No |
| <i>Sub Saharan Africa</i> | No |
| <i>West Nile Virus Risk</i> | No |
| <i>Tropical Virus Risk</i> | Yes Chikungunya, Dengue and Zika virus |
| <i>Update Information</i> | This entry was last updated in GDRI Edition 002 Release 02 |

Qatar

| | |
|-------------------------------|----|
| <i>Malaria</i> | No |
| <i>Trypanosoma Cruzi Risk</i> | No |

| | |
|-----------------------------|---|
| <i>Sub Saharan Africa</i> | No |
| <i>West Nile Virus Risk</i> | No |
| <i>Tropical Virus Risk</i> | No |
| <i>Update Information</i> | This entry was last updated in GDRI Edition 002 Release 01 |

Reunion

| | |
|-------------------------------|---|
| <i>Malaria</i> | No |
| <i>Trypanosoma Cruzi Risk</i> | No |
| <i>Sub Saharan Africa</i> | No |
| <i>West Nile Virus Risk</i> | No |
| <i>Tropical Virus Risk</i> | Yes Chikungunya Virus and Dengue |
| <i>Update Information</i> | This entry was last updated in GDRI Edition 002 Release 01 |

Romania

| | |
|-------------------------------|--|
| <i>Malaria</i> | No |
| <i>Trypanosoma Cruzi Risk</i> | No |
| <i>Sub Saharan Africa</i> | No |
| <i>West Nile Virus Risk</i> | Yes Donors who have visited between 1st May and the 30th November must have the WNV Donor Selection Guideline applied. |
| <i>Tropical Virus Risk</i> | No |
| <i>Update Information</i> | This entry was last updated in GDRI Edition 002 Release 01 |

Russia

| | |
|-------------------------------|--|
| <i>Malaria</i> | No |
| <i>Trypanosoma Cruzi Risk</i> | No |
| <i>Sub Saharan Africa</i> | No |
| <i>West Nile Virus Risk</i> | Yes Donors who have visited the following regions of Russia between 1st May and the 30th November must have the WNV Donor Selection Guideline applied. Altayskiy Kray, Adygeya |

republic, Lipetskaya, Novosibirskaya, Voronezhskaya, Volgogradskaya, Rostovskaya, Astrakhanskaya, Belgorodskaya, Samarskaya, Saratovskaya, Chelyabinskaya oblasts and the Tatarstan Republic.

These oblasts are also known as the regions of Altai, Astrakhan, Rostov, Volgograd, Lipetsk, Novosibirsk, Voronezhthese, Belgorod, Samara, Saratov, and Chelyabinsk and which are in the south west of the Russian Federation just north of the Black and Caspian seas.

Tropical Virus Risk

No

Update Information

This entry was last updated in
GDRI Edition 002 Release 01

Rwanda

Malaria

Yes

All year in whole country

*Malaria Risk
Category*

A

*Trypanosoma Cruzi
Risk*

No

Sub Saharan Africa

Yes

West Nile Virus Risk

No

Tropical Virus Risk

Yes Dengue Virus

*Viral Haemorrhagic
Fever Risk*

Yes

Marburg Fever outbreak in whole country: September to December 2024.

Update Information

This entry was last updated in
GDRI Edition 002 Release 49

Saint Barthelemy

Malaria

No

*Trypanosoma Cruzi
Risk*

No

Sub Saharan Africa

No

West Nile Virus Risk

No

Tropical Virus Risk

Yes Chikungunya Virus, Dengue Virus and Zika Virus

Update Information

This entry was last updated in
GDRI Edition 002 Release 30.

Saint Helena

| | |
|-------------------------------|---|
| <i>Malaria</i> | No |
| <i>Trypanosoma Cruzi Risk</i> | No |
| <i>Sub Saharan Africa</i> | No |
| <i>West Nile Virus Risk</i> | No |
| <i>Tropical Virus Risk</i> | No |
| <i>Update Information</i> | This entry was last updated in GDRI Edition 002 Release 01 |

Saint Kitts and Nevis

| | |
|-------------------------------|---|
| <i>Malaria</i> | No |
| <i>Trypanosoma Cruzi Risk</i> | No |
| <i>Sub Saharan Africa</i> | No |
| <i>West Nile Virus Risk</i> | No |
| <i>Tropical Virus Risk</i> | Yes Chikungunya Virus and Zika Virus |
| <i>Update Information</i> | This entry was last updated in GDRI Edition 002 Release 07 |

Saint Lucia

| | |
|-------------------------------|---|
| <i>Malaria</i> | No |
| <i>Trypanosoma Cruzi Risk</i> | No |
| <i>Sub Saharan Africa</i> | No |
| <i>West Nile Virus Risk</i> | No |
| <i>Tropical Virus Risk</i> | Yes Chikungunya Virus, Zika virus and Dengue virus |
| <i>Update Information</i> | This entry was last updated in GDRI Edition 002 Release 04 |

Saint Martin

| | |
|-------------------------------|---|
| <i>Malaria</i> | No |
| <i>Trypanosoma Cruzi Risk</i> | No |
| <i>Sub Saharan Africa</i> | No |
| <i>West Nile Virus Risk</i> | No |
| <i>Tropical Virus Risk</i> | Yes Chikungunya Virus, Dengue Virus and Zika Virus |

Update Information This entry was last updated in
GDRi Edition 002 Release 18

Saint Pierre and Miquelon

| | |
|-------------------------------|--|
| <i>Malaria</i> | No |
| <i>Trypanosoma Cruzi Risk</i> | No |
| <i>Sub Saharan Africa</i> | No |
| <i>West Nile Virus Risk</i> | Yes Donors who have visited between 1st May and the 30th November must have the WNV Donor Selection Guideline applied. |
| <i>Tropical Virus Risk</i> | No |
| <i>Update Information</i> | This entry was last updated in GDRi Edition 002 Release 01 |

Saint Vincent and the Grenadines

| | |
|-------------------------------|---|
| <i>Malaria</i> | No |
| <i>Trypanosoma Cruzi Risk</i> | No |
| <i>Sub Saharan Africa</i> | No |
| <i>West Nile Virus Risk</i> | No |
| <i>Tropical Virus Risk</i> | Yes Chikungunya Virus, Dengue and Zika Virus |
| <i>Update Information</i> | This entry was last updated in GDRi Edition 002 Release 03 |

Samoa

| | |
|-------------------------------|---|
| <i>Malaria</i> | No |
| <i>Trypanosoma Cruzi Risk</i> | No |
| <i>Sub Saharan Africa</i> | No |
| <i>West Nile Virus Risk</i> | No |
| <i>Tropical Virus Risk</i> | Yes Chikungunya, Dengue and Zika virus |
| <i>Update Information</i> | This entry was last updated in GDRi Edition 002 Release 02 |

San Marino

| | |
|-------------------------------|---|
| <i>Malaria</i> | No |
| <i>Trypanosoma Cruzi Risk</i> | No |
| <i>Sub Saharan Africa</i> | No |
| <i>West Nile Virus Risk</i> | No |
| <i>Tropical Virus Risk</i> | No |
| <i>Update Information</i> | This entry was last updated in GDRI Edition 002 Release 01 |

Sao Tome and Principe

| | |
|-------------------------------|--|
| <i>Malaria</i> | Yes All year in whole country |
| <i>Malaria Risk Category</i> | A |
| <i>Trypanosoma Cruzi Risk</i> | No |
| <i>Sub Saharan Africa</i> | No |
| <i>West Nile Virus Risk</i> | No |
| <i>Tropical Virus Risk</i> | Yes Dengue Virus |
| <i>Update Information</i> | This entry was last updated in: GDRI Edition 002 Release 44 |

Saudi Arabia

| | |
|-------------------------------|--|
| <i>Malaria</i> | Yes Risk in the South and West provinces. No risk in the Eastern, Northern and Central provinces, Jeddah, Mecca, Medina and Taif. |
| <i>Malaria Risk Category</i> | B |
| <i>Previous Malaria Risk</i> | Yes all year whole country (except urban Jeddah, Mecca, Medina and Taif) until Sept 2006 |
| <i>Trypanosoma Cruzi Risk</i> | No |
| <i>Sub Saharan Africa</i> | No |
| <i>West Nile Virus Risk</i> | No |
| <i>Tropical Virus Risk</i> | Yes Dengue |
| <i>Update Information</i> | This entry was last updated in GDRI Edition 002 Release 05 |

Senegal

| | |
|--------------------------------------|---|
| <i>Malaria</i> | Yes All year in whole country |
| <i>Malaria Risk Category</i> | A |
| <i>Trypanosoma Cruzi Risk</i> | No |
| <i>Sub Saharan Africa</i> | Yes |
| <i>West Nile Virus Risk</i> | No |
| <i>Tropical Virus Risk</i> | Yes Chikungunya Virus, Dengue Virus, Yellow Fever and Zika Virus |
| <i>Viral Haemorrhagic Fever Risk</i> | Yes |
| <i>Update Information</i> | This entry was last updated in GDRI Edition 002 Release 33 |

Serbia

| | |
|-------------------------------|--|
| <i>Malaria</i> | No |
| <i>Trypanosoma Cruzi Risk</i> | No |
| <i>Sub Saharan Africa</i> | No |
| <i>West Nile Virus Risk</i> | Yes Donors who have visited between 1st May and the 30th November must have the WNV Donor Selection Guideline applied. |
| <i>Tropical Virus Risk</i> | No |
| <i>Update Information</i> | This entry was last updated in GDRI Edition 002 Release 01 |

Seychelles

| | |
|-------------------------------|---|
| <i>Malaria</i> | No |
| <i>Trypanosoma Cruzi Risk</i> | No |
| <i>Sub Saharan Africa</i> | No |
| <i>West Nile Virus Risk</i> | No |
| <i>Tropical Virus Risk</i> | Yes Chikungunya Virus and Dengue |
| <i>Update Information</i> | This entry was last updated in GDRI Edition 002 Release 07 |

Sierra Leone

| | |
|--------------------------------------|---|
| <i>Malaria</i> | Yes All year in whole country |
| <i>Malaria Risk Category</i> | A |
| <i>Trypanosoma Cruzi Risk</i> | No |
| <i>Sub Saharan Africa</i> | Yes |
| <i>West Nile Virus Risk</i> | No |
| <i>Tropical Virus Risk</i> | Yes Chikungunya Virus and Yellow Fever |
| <i>Viral Haemorrhagic Fever Risk</i> | Yes Ebola outbreak (whole country): May 2014 – March 2016 |
| <i>Update Information</i> | This entry was last updated in GDRI Edition 002 Release 38 |

Singapore

| | |
|-------------------------------|---|
| <i>Malaria</i> | No |
| <i>Trypanosoma Cruzi Risk</i> | No |
| <i>Sub Saharan Africa</i> | No |
| <i>West Nile Virus Risk</i> | No |
| <i>Tropical Virus Risk</i> | Yes Chikungunya Virus, Zika Virus and Dengue Virus |
| <i>Update Information</i> | This entry was last updated in GDRI Edition 002 Release 24 |

Sint Maarten

| | |
|-------------------------------|---|
| <i>Malaria</i> | No |
| <i>Trypanosoma Cruzi Risk</i> | No |
| <i>Sub Saharan Africa</i> | No |
| <i>West Nile Virus Risk</i> | No |
| <i>Tropical Virus Risk</i> | Yes Chikungunya Virus and Zika Virus |
| <i>Update Information</i> | This entry was last updated in GDRI Edition 002 Release 04 |

Slovakia

| | |
|-------------------------------|----|
| <i>Malaria</i> | No |
| <i>Trypanosoma Cruzi Risk</i> | No |

| | |
|-----------------------------|---|
| <i>Sub Saharan Africa</i> | No |
| <i>West Nile Virus Risk</i> | No |
| <i>Tropical Virus Risk</i> | No |
| <i>Update Information</i> | This entry was last updated in GDRI Edition 002 Release 01 |

Slovenia

| | |
|-------------------------------|---|
| <i>Malaria</i> | No |
| <i>Trypanosoma Cruzi Risk</i> | No |
| <i>Sub Saharan Africa</i> | No |
| <i>West Nile Virus Risk</i> | Yes Donors who have visited between 1st May and the 30th November must have the WNV Donor Selection Guideline applied. |
| <i>Tropical Virus Risk</i> | No |
| <i>Update Information</i> | This entry was last updated in GDRI Edition 002 Release 16 |

Solomon Islands

| | |
|-------------------------------|---|
| <i>Malaria</i> | Yes All year in whole country |
| <i>Malaria Risk Category</i> | A |
| <i>Trypanosoma Cruzi Risk</i> | No |
| <i>Sub Saharan Africa</i> | No |
| <i>West Nile Virus Risk</i> | No |
| <i>Tropical Virus Risk</i> | Yes Dengue Virus and Zika Virus |
| <i>Update Information</i> | This entry was last updated in GDRI Edition 002 Release 18 |

Somalia

| | |
|-------------------------------|---|
| <i>Malaria</i> | Yes All year in whole country |
| <i>Malaria Risk Category</i> | A |
| <i>Trypanosoma Cruzi Risk</i> | No |
| <i>Sub Saharan Africa</i> | Yes |

| | |
|-----------------------------|--|
| <i>West Nile Virus Risk</i> | No |
| <i>Tropical Virus Risk</i> | Yes Chikungunya Virus and Dengue Virus |
| <i>Update Information</i> | This entry was last updated in: GDRI Edition 002 Release 44 |

South Africa

| | |
|-------------------------------|--|
| <i>Malaria</i> | Yes There is an all year risk in some rural areas in the North East of the country including the Kruger National Park, Limpopo Transfrontier Park, Hans Merensky Nature reserve and Nwanedi National Park. |
| <i>Malaria Risk Category</i> | B |
| <i>Previous Malaria Risk</i> | Yes all year whole country until February 1996 Yes all year North East of the country until September 2006 |
| <i>Trypanosoma Cruzi Risk</i> | No |
| <i>Sub Saharan Africa</i> | Yes |
| <i>West Nile Virus Risk</i> | No |
| <i>Tropical Virus Risk</i> | Yes Chikungunya Virus |

Malarial Map



This map is only intended as a guide and is not exact. The map must always be used in conjunction with the malaria advice text. Map downloaded from <http://www.fitfortravel.nhs.uk> on 27 November 2020

| | |
|---------------------------|--|
| <i>Update Information</i> | This entry was last updated in GDRI Edition 002 Release 31. |
|---------------------------|--|

South Georgia and the South Sandwich Islands

| | |
|-------------------------------|---|
| <i>Malaria</i> | No |
| <i>Trypanosoma Cruzi Risk</i> | No |
| <i>Sub Saharan Africa</i> | No |
| <i>West Nile Virus Risk</i> | No |
| <i>Tropical Virus Risk</i> | No |
| <i>Update Information</i> | This entry was last updated in GDRI Edition 002 Release 01 |

South Korea (Republic of)

| | |
|-------------------------------|---|
| <i>Malaria</i> | Yes All year in the de-militarized zone between North and South Korea (Kyunggi-do and Gangwon-do provinces). No risk in the main tourist destinations including Seoul. |
| <i>Malaria Risk Category</i> | C |
| <i>Trypanosoma Cruzi Risk</i> | No |
| <i>Sub Saharan Africa</i> | No |
| <i>West Nile Virus Risk</i> | No |
| <i>Tropical Virus Risk</i> | No |
| <i>Update Information</i> | This entry was last updated in GDRI Edition 002 Release 24 |

South Sudan

| | |
|-------------------------------|---|
| <i>Malaria</i> | Yes All year in whole country |
| <i>Malaria Risk Category</i> | A |
| <i>Trypanosoma Cruzi Risk</i> | No |
| <i>Sub Saharan Africa</i> | Yes |
| <i>West Nile Virus Risk</i> | No |
| <i>Tropical Virus Risk</i> | Yes Chikungunya Virus and Yellow Fever |
| <i>Update Information</i> | |

This entry was last updated in
GDRI Edition 002 Release 33

Spain

| | |
|-------------------------------|------------|
| <i>Malaria</i> | No |
| <i>Trypanosoma Cruzi Risk</i> | No |
| <i>Sub Saharan Africa</i> | No |
| <i>West Nile Virus Risk</i> | Yes |

Donors who have visited the regions of Andalusia and Extremadura between 1st May and the 30th November must have the WNV Donor Selection Guideline applied.

These areas are marked in black on the map.

Andalusia is an Autonomous Community(region) in the south of Spain. It includes the cities of Seville, Malaga, Cordoba and Granada.

Extremadura is an Autonomous Community (region) comprised of the provinces of Cáceres and Badajoz. It includes the cities of Mérida and Badajoz.

(Map data ©2023 Inst. Geogr. Nacional, Google)

| | |
|----------------------------|----|
| <i>Tropical Virus Risk</i> | No |
|----------------------------|----|



Update Information

This entry was last updated in
GDRI Edition 002 Release 41

Spratly Islands

| | |
|-------------------------------|----|
| <i>Malaria</i> | No |
| <i>Trypanosoma Cruzi Risk</i> | No |
| <i>Sub Saharan Africa</i> | No |
| <i>West Nile Virus Risk</i> | No |

| | |
|----------------------------|---|
| <i>Tropical Virus Risk</i> | No |
| <i>Update Information</i> | This entry was last updated in GDRI Edition 002 Release 01 |

Sri Lanka

| | |
|-------------------------------|---|
| <i>Malaria</i> | No |
| <i>Previous Malaria Risk</i> | Yes all year whole country until Dec 2011 Yes all year northern half of country Dec 2011– Feb 2015 |
| <i>Trypanosoma Cruzi Risk</i> | No |
| <i>Sub Saharan Africa</i> | No |
| <i>West Nile Virus Risk</i> | No |
| <i>Tropical Virus Risk</i> | Yes Chikungunya Virus and Dengue |
| <i>Update Information</i> | This entry was last updated in GDRI Edition 002 Release 09 |

Sudan

| | |
|--------------------------------------|---|
| <i>Malaria</i> | Yes All year in whole country |
| <i>Malaria Risk Category</i> | A |
| <i>Trypanosoma Cruzi Risk</i> | No |
| <i>Sub Saharan Africa</i> | Yes |
| <i>West Nile Virus Risk</i> | No |
| <i>Tropical Virus Risk</i> | Yes Chikungunya Virus, Dengue Virus and Yellow Fever |
| <i>Viral Haemorrhagic Fever Risk</i> | Yes |
| <i>Update Information</i> | This entry was last updated in GDRI Edition 002 Release 33 |

Suriname

| | |
|------------------------------|--|
| <i>Malaria</i> | Yes All year in most of the country. Visitors to the seven coastal districts and savannah areas and Paramaribo City only, accept. |
| <i>Malaria Risk Category</i> | B |
| <i>Previous Malaria Risk</i> | Yes all year whole country until Dec 2011 |

| | |
|----------------------------------|---|
| <i>Trypanosoma Cruzi</i> Risk | Yes |
| <i>Sub Saharan Africa</i> | No |
| <i>West Nile Virus Risk</i> | No |
| <i>Tropical Virus Risk</i> | Yes Chikungunya Virus, Yellow Fever and Zika virus |

Update Information This entry was last updated in
GDRI Edition 002 Release 33

Svalbard

| | |
|----------------------------------|---|
| <i>Malaria</i> | No |
| <i>Trypanosoma Cruzi</i> Risk | No |
| <i>Sub Saharan Africa</i> | No |
| <i>West Nile Virus Risk</i> | No |
| <i>Tropical Virus Risk</i> | No |
| <i>Update Information</i> | This entry was last updated in GDRI Edition 002 Release 01 |

Sweden

| | |
|----------------------------------|---|
| <i>Malaria</i> | No |
| <i>Trypanosoma Cruzi</i> Risk | No |
| <i>Sub Saharan Africa</i> | No |
| <i>West Nile Virus Risk</i> | No |
| <i>Tropical Virus Risk</i> | No |
| <i>Update Information</i> | This entry was last updated in GDRI Edition 002 Release 01 |

Switzerland

| | |
|----------------------------------|----|
| <i>Malaria</i> | No |
| <i>Trypanosoma Cruzi</i> Risk | No |
| <i>Sub Saharan Africa</i> | No |
| <i>West Nile Virus Risk</i> | No |

| | |
|----------------------------|---|
| <i>Tropical Virus Risk</i> | No |
| <i>Update Information</i> | This entry was last updated in GDRI Edition 002 Release 01 |

Syria

| | |
|-------------------------------|--|
| <i>Malaria</i> | Yes Must be considered to be all year in whole country in view of current situation. |
| <i>Malaria Risk Category</i> | A |
| <i>Previous Malaria Risk</i> | Yes all year whole country until Feb 1996 Yes May – Oct along northern border with Turkey and Northern part of country until May 2012 |
| <i>Trypanosoma Cruzi Risk</i> | No |
| <i>Sub Saharan Africa</i> | No |
| <i>West Nile Virus Risk</i> | No |
| <i>Tropical Virus Risk</i> | No |
| <i>Update Information</i> | This entry was last updated in GDRI Edition 002 Release 05 |

Taiwan

| | |
|-------------------------------|---|
| <i>Malaria</i> | No |
| <i>Trypanosoma Cruzi Risk</i> | No |
| <i>Sub Saharan Africa</i> | No |
| <i>West Nile Virus Risk</i> | No |
| <i>Tropical Virus Risk</i> | Yes Dengue |
| <i>Update Information</i> | This entry was last updated in GDRI Edition 002 Release 24 |

Tajikistan

| | |
|-------------------------------|----|
| <i>Malaria</i> | No |
| <i>Trypanosoma Cruzi Risk</i> | No |

| | |
|-----------------------------|---|
| <i>Sub Saharan Africa</i> | No |
| <i>West Nile Virus Risk</i> | No |
| <i>Tropical Virus Risk</i> | No |
| <i>Update Information</i> | This entry was last updated in GDRI Edition 002 Release 39. |

Tanzania

| | |
|--------------------------------------|--|
| <i>Malaria</i> | Yes All year in whole country. |
| <i>Malaria Risk Category</i> | A |
| <i>Trypanosoma Cruzi Risk</i> | No |
| <i>Sub Saharan Africa</i> | Yes |
| <i>West Nile Virus Risk</i> | No |
| <i>Tropical Virus Risk</i> | Yes Chikungunya Virus and Dengue Virus |
| <i>Viral Haemorrhagic Fever Risk</i> | Yes Marburg Fever outbreaks in Kagera Region: February to June 2023 and January 2025 onwards. |
| <i>Update Information</i> | This entry was last updated in: GDRI Edition 002 Release 49 |

Thailand

| | |
|-------------------------------|---|
| <i>Malaria</i> | Yes All year in areas along the borders and in inland areas of Surat Thani province – refer to the map. From October 2021, there has been an outbreak of malaria in the Ranong, Songkhla and Trat provinces, including the island of Ko Chang. A risk should also be applied to these areas. (Note: an updated map is not available, therefore these areas are not shown in red on the map below). Visitors to all other areas including the cities of Bangkok, Chiang Mai, Chiang Rai, Pattaya, Phuket, the island of Ko Samui and the River Quai bridge area, accept |
| <i>Malaria Risk Category</i> | B |
| <i>Previous Malaria Risk</i> | Yes all year whole country until May 2012 |
| <i>Trypanosoma Cruzi Risk</i> | No |
| <i>Sub Saharan Africa</i> | No |
| <i>West Nile Virus Risk</i> | No |
| <i>Tropical Virus Risk</i> | Yes Chikungunya Virus, Dengue Virus and Zika Virus |

Malarial Map



This map is only intended as a guide and is not exact. The map must always be used in conjunction with the malaria advice text. Map downloaded from <http://www.fitfortravel.nhs.uk> on 23 June 2017.

Update Information This entry was last updated in
GDRl Edition 002 Release 34.

The Democratic Republic of The Congo

| | |
|------------------------|--|
| Malaria | Yes All year in the whole country. |
| Malaria Risk Category | A |
| Trypanosoma Cruzi Risk | No |
| Sub Saharan Africa | Yes |
| West Nile Virus Risk | No |

| | |
|--------------------------------------|--|
| <i>Tropical Virus Risk</i> | Yes Chikungunya Virus and Yellow Fever |
| <i>Viral Haemorrhagic Fever Risk</i> | Yes Ebola outbreaks: Equateur province, August – November 2014 Bas Uélé province, May – July 2017 Equateur, South Kivu and Ituri provinces, May 2018 – July 2022 North Kivu province, August 2018 – September 2022 |
| <i>Update Information</i> | This entry was last updated in GDRI Edition 002 Release 38 |

The Republic of The Congo

| | |
|--------------------------------------|---|
| <i>Malaria</i> | Yes All year in whole country |
| <i>Malaria Risk Category</i> | A |
| <i>Trypanosoma Cruzi Risk</i> | No |
| <i>Sub Saharan Africa</i> | Yes |
| <i>West Nile Virus Risk</i> | No |
| <i>Tropical Virus Risk</i> | Yes Chikungunya Virus and Yellow Fever |
| <i>Viral Haemorrhagic Fever Risk</i> | Yes |
| <i>Update Information</i> | This entry was last updated in GDRI Edition 002 Release 33 |

Togo

| | |
|--------------------------------------|---|
| <i>Malaria</i> | Yes All year in whole country |
| <i>Malaria Risk Category</i> | A |
| <i>Trypanosoma Cruzi Risk</i> | No |
| <i>Sub Saharan Africa</i> | Yes |
| <i>West Nile Virus Risk</i> | No |
| <i>Tropical Virus Risk</i> | Yes Dengue Virus and Yellow Fever |
| <i>Viral Haemorrhagic Fever Risk</i> | Yes |
| <i>Update Information</i> | This entry was last updated in GDRI Edition 002 Release 33 |

Tokelau

| | |
|-------------------------------|--|
| <i>Malaria</i> | No |
| <i>Trypanosoma Cruzi Risk</i> | No |
| <i>Sub Saharan Africa</i> | No |
| <i>West Nile Virus Risk</i> | No |
| <i>Tropical Virus Risk</i> | Yes Chikungunya Virus |
| <i>Update Information</i> | This entry was last updated in GDRI Edition 002 Release 01 |

Tonga

| | |
|-------------------------------|---|
| <i>Malaria</i> | No |
| <i>Trypanosoma Cruzi Risk</i> | No |
| <i>Sub Saharan Africa</i> | No |
| <i>West Nile Virus Risk</i> | No |
| <i>Tropical Virus Risk</i> | Yes Chikungunya virus, Dengue virus and Zika virus |
| <i>Update Information</i> | This entry was last updated in GDRI Edition 002 Release 17. |

Trinidad and Tobago

| | |
|-------------------------------|--|
| <i>Malaria</i> | No |
| <i>Trypanosoma Cruzi Risk</i> | No |
| <i>Sub Saharan Africa</i> | No |
| <i>West Nile Virus Risk</i> | No |
| <i>Tropical Virus Risk</i> | Yes Dengue virus, Yellow Fever and Zika Virus |
| <i>Update Information</i> | This entry was last updated in GDRI Edition 002 Release 33 |

Tromelin Island

| | |
|-------------------------------|----|
| <i>Malaria</i> | No |
| <i>Trypanosoma Cruzi Risk</i> | No |
| <i>Sub Saharan Africa</i> | No |
| <i>West Nile Virus Risk</i> | No |
| <i>Tropical Virus Risk</i> | No |

Update Information This entry was last updated in
GDRI Edition 002 Release 01

Tunisia

| | |
|-------------------------------|--|
| <i>Malaria</i> | No |
| <i>Trypanosoma Cruzi Risk</i> | No |
| <i>Sub Saharan Africa</i> | No |
| <i>West Nile Virus Risk</i> | Yes Donors who have visited between 1st May and the 30th November must have the WNV Donor Selection Guideline applied. |
| <i>Tropical Virus Risk</i> | No |
| <i>Update Information</i> | This entry was last updated in GDRI Edition 002 Release 01 |

Turkey

| | |
|-------------------------------|---|
| <i>Malaria</i> | Yes Malaria occurs from May to October, mainly in the south-eastern part of the country, the Syria and Iraq borders and in the Cukurova Plain east of Adana. There is no malaria risk in the main tourist areas in the west and south-west of the country. Visitors to the popular tourist resorts served by the airports in Bodrum, Antalya and Dalaman can be accepted. |
| <i>Malaria Risk Category</i> | B |
| <i>Previous Malaria Risk</i> | Yes all year whole country until Feb 1996 |
| <i>Trypanosoma Cruzi Risk</i> | No |
| <i>Sub Saharan Africa</i> | No |
| <i>West Nile Virus Risk</i> | Yes Donors who have visited between 1st May and the 30th November must have the WNV Donor Selection Guideline applied. |
| <i>Tropical Virus Risk</i> | No |

Malarial Map



This map is only intended as a guide and is not exact. The map must always be used in conjunction with the malaria advice text. Map downloaded from <http://www.fitfortravel.nhs.uk> on 03 February 2015.

Update Information This entry was last updated in
GDRI Edition 002 Release 05

Turkmenistan

Malaria No

Previous Malaria Risk Yes Jun – Oct in South Eastern border regions until Sept 2015

Trypanosoma Cruzi Risk No

Sub Saharan Africa No

West Nile Virus Risk No

Tropical Virus Risk No

Update Information This entry was last updated in
GDRI Edition 002 Release 05

Turks and Caicos Islands

Malaria No

Trypanosoma Cruzi Risk No

Sub Saharan Africa No

West Nile Virus Risk No

Tropical Virus Risk **Yes** Chikungunya Virus, Dengue Virus and Zika Virus

Update Information This entry was last updated in
GDRI Edition 002 Release 43

Tuvalu

Malaria No

| | |
|-------------------------------|--|
| <i>Trypanosoma Cruzi Risk</i> | No |
| <i>Sub Saharan Africa</i> | No |
| <i>West Nile Virus Risk</i> | No |
| <i>Tropical Virus Risk</i> | No |
| <i>Update Information</i> | This entry was last updated in GDRI Edition 002 Release 01 |

Uganda

| | |
|--------------------------------------|--|
| <i>Malaria</i> | Yes All year in whole country |
| <i>Malaria Risk Category</i> | A |
| <i>Trypanosoma Cruzi Risk</i> | No |
| <i>Sub Saharan Africa</i> | Yes |
| <i>West Nile Virus Risk</i> | No |
| <i>Tropical Virus Risk</i> | Yes Chikungunya Virus, Yellow Fever and Zika Virus |
| <i>Viral Haemorrhagic Fever Risk</i> | Yes Ebola outbreak from September 2022 to January 2023, applies to the following regions: Mubende and Kassanda Districts in the Central Region, and Bunyangabu, Kagadi and Kyegegwa Districts in the Western Region. |
| <i>Update Information</i> | This entry was last updated in GDRI Edition 002 Release 38 |

Ukraine

| | |
|-------------------------------|--|
| <i>Malaria</i> | No |
| <i>Trypanosoma Cruzi Risk</i> | No |
| <i>Sub Saharan Africa</i> | No |
| <i>West Nile Virus Risk</i> | Yes Donors who have visited between 1st May and 30th November must have the WNV Donor Selection Guideline applied. |
| <i>Tropical Virus Risk</i> | No |
| <i>Update Information</i> | This entry was last updated in GDRI Edition 002 Release 46 |

United Arab Emirates

| | |
|----------------|----|
| <i>Malaria</i> | No |
|----------------|----|

| | |
|-------------------------------|--|
| <i>Previous Malaria Risk</i> | Yes all year whole country until Feb 1996 Yes in East of country until Dec 2011 with no risk in the cities of Abu Dhabi, Dubai, Sharjah, Ajman and Umm al Qaiwain |
| <i>Trypanosoma Cruzi Risk</i> | No |
| <i>Sub Saharan Africa</i> | No |
| <i>West Nile Virus Risk</i> | No |
| <i>Tropical Virus Risk</i> | Yes Dengue Virus |
| <i>Update Information</i> | This entry was last updated in GDRI Edition 002 Release 45 |

United Kingdom

| | |
|-------------------------------|---|
| <i>Malaria</i> | No |
| <i>Trypanosoma Cruzi Risk</i> | No |
| <i>Sub Saharan Africa</i> | No |
| <i>West Nile Virus Risk</i> | No |
| <i>Tropical Virus Risk</i> | No |
| <i>Update Information</i> | This entry was last updated in GDRI Edition 002 Release 01 |

United States of America

| | |
|-------------------------------|--|
| <i>Malaria</i> | No |
| <i>Trypanosoma Cruzi Risk</i> | No |
| <i>Sub Saharan Africa</i> | No |
| <i>West Nile Virus Risk</i> | Yes in all regions of the USA except Hawaii, Alaska and US Virgin Islands (St Choix, St John and St Thomas in the Leeward Islands) Donors who have visited between 1st May and the 30th November must have the WNV Donor Selection Guideline applied. |
| <i>Tropical Virus Risk</i> | Yes Chikungunya Virus and Zika virus in the US Virgin Islands (St Choix, St John and St Thomas in the Leeward Islands). Dengue virus in Hawaii. Donors who have visited these islands must have the Tropical Virus Donor Selection Guideline applied. |
| <i>Update Information</i> | This entry was last updated in GDRI Edition 002 Release 18 |

Uruguay

| | |
|-------------------------------|--|
| <i>Malaria</i> | No |
| <i>Trypanosoma Cruzi Risk</i> | Yes |
| <i>Sub Saharan Africa</i> | No |
| <i>West Nile Virus Risk</i> | No |
| <i>Tropical Virus Risk</i> | Yes Dengue Virus |
| <i>Update Information</i> | This entry was last updated in GDRi Edition 002 Release 07 |

Uzbekistan

| | |
|-------------------------------|--|
| <i>Malaria</i> | No |
| <i>Trypanosoma Cruzi Risk</i> | No |
| <i>Sub Saharan Africa</i> | No |
| <i>West Nile Virus Risk</i> | No |
| <i>Tropical Virus Risk</i> | No |
| <i>Update Information</i> | This entry was last updated in GDRi Edition 002 Release 01 |

Vanuatu

| | |
|-------------------------------|---|
| <i>Malaria</i> | Yes All year in whole country |
| <i>Malaria Risk Category</i> | A |
| <i>Trypanosoma Cruzi Risk</i> | No |
| <i>Sub Saharan Africa</i> | No |
| <i>West Nile Virus Risk</i> | No |
| <i>Tropical Virus Risk</i> | Yes Dengue virus and Zika virus |
| <i>Update Information</i> | This entry was last updated in GDRi Edition 002 Release 17. |

Venezuela

| | |
|-------------------------------|---|
| <i>Malaria</i> | Yes All year in whole country. |
| <i>Malaria Risk Category</i> | A |
| <i>Trypanosoma Cruzi Risk</i> | Yes |
| <i>Sub Saharan Africa</i> | No |
| <i>West Nile Virus Risk</i> | No |
| <i>Tropical Virus Risk</i> | Yes Chikungunya Virus, Dengue Virus, Yellow Fever and Zika Virus |
| <i>Update Information</i> | This entry was last updated in GDRI Edition 002 Release 33 |

Vietnam

| | |
|-------------------------------|---|
| <i>Malaria</i> | Yes All year in whole country. Visitors to Ho Chi Min City, Hanoi, Da Nang and their 4 international airports, the Red River and Mekong deltas, Phu Quoc Island and coastal plains only, accept. Refer to map. |
| <i>Malaria Risk Category</i> | B |
| <i>Previous Malaria Risk</i> | Yes all year whole country until May 2012 |
| <i>Trypanosoma Cruzi Risk</i> | No |
| <i>Sub Saharan Africa</i> | No |
| <i>West Nile Virus Risk</i> | No |
| <i>Tropical Virus Risk</i> | Yes Chikungunya virus, Zika virus and Dengue virus |

Malarial Map



This map is only intended as a guide and is not exact. The map must always be used in conjunction with the malaria advice text. Map downloaded from <http://www.fitfortravel.nhs.uk> on 23 June 2017.

Update Information This entry was last updated in
GDRl Edition 002 Release 24

Wake Atoll

| | |
|-----------------------------|----|
| <i>Malaria</i> | No |
| <i>Trypanosoma Cruzi</i> | No |
| <i>Risk</i> | |
| <i>Sub Saharan Africa</i> | No |
| <i>West Nile Virus Risk</i> | No |
| <i>Tropical Virus Risk</i> | No |
| <i>Update Information</i> | |

This entry was last updated in
GDRI Edition 002 Release 01

Wallis and Futuna

| | |
|-------------------------------|--|
| <i>Malaria</i> | No |
| <i>Trypanosoma Cruzi Risk</i> | No |
| <i>Sub Saharan Africa</i> | No |
| <i>West Nile Virus Risk</i> | No |
| <i>Tropical Virus Risk</i> | Yes Dengue virus. |
| <i>Update Information</i> | This entry was last updated in GDRI Edition 002 Release 17. |

West Bank, Gaza Strip and Palestine Occupied Territories

| | |
|-------------------------------|--|
| <i>Malaria</i> | No |
| <i>Trypanosoma Cruzi Risk</i> | No |
| <i>Sub Saharan Africa</i> | No |
| <i>West Nile Virus Risk</i> | Yes Donors who have visited between 1st May and the 30th November must have the WNV Donor Selection Guideline applied. |
| <i>Tropical Virus Risk</i> | No |
| <i>Update Information</i> | This entry was last updated in GDRI Edition 002 Release 01 |

West Indies

See See specific island(s) visited

Windward Islands (Caribbean)

| | |
|-------------------------------|----|
| <i>Malaria</i> | No |
| <i>Trypanosoma Cruzi Risk</i> | No |
| <i>Sub Saharan Africa</i> | No |
| <i>West Nile Virus Risk</i> | No |
| <i>Tropical Virus Risk</i> | No |
| <i>Update Information</i> | |

This entry was last updated in
GDRI Edition 002 Release 01

Yemen

| | |
|-------------------------------|---|
| <i>Malaria</i> | Yes All year in most of the country, visitors to Sana'a only, accept. |
| <i>Malaria Risk Category</i> | B |
| <i>Previous Malaria Risk</i> | Yes all year whole country (except Aden and airport) until Sept 2015 |
| <i>Trypanosoma Cruzi Risk</i> | No |
| <i>Sub Saharan Africa</i> | No |
| <i>West Nile Virus Risk</i> | No |
| <i>Tropical Virus Risk</i> | Yes Chikungunya Virus and Dengue |

Malarial Map



This map is only intended as a guide and is not exact. The map must always be used in conjunction with the malaria advice text. Map downloaded from <http://www.fitfortravel.nhs.uk> on 01 October 2015.

| | |
|---------------------------|---|
| <i>Update Information</i> | This entry was last updated in GDRI Edition 002 Release 05 |
|---------------------------|---|

Zambia

| | |
|-------------------------------|---|
| <i>Malaria</i> | Yes All year in whole country |
| <i>Malaria Risk Category</i> | A |
| <i>Trypanosoma Cruzi Risk</i> | No |
| <i>Sub Saharan Africa</i> | Yes |

| | |
|-----------------------------|--|
| <i>West Nile Virus Risk</i> | No |
| <i>Tropical Virus Risk</i> | Yes Dengue Virus |
| <i>Update Information</i> | This entry was last updated in: GDRI Edition 002 Release 44 |

Zimbabwe

| | |
|-------------------------------|---|
| <i>Malaria</i> | Yes All year in most of the country. Visitors to Harare and Bulawayo and the central mountainous region only, accept |
| <i>Malaria Risk Category</i> | B |
| <i>Previous Malaria Risk</i> | Yes all year whole country until Dec 2011 |
| <i>Trypanosoma Cruzi Risk</i> | No |
| <i>Sub Saharan Africa</i> | Yes |
| <i>West Nile Virus Risk</i> | No |
| <i>Tropical Virus Risk</i> | Yes Chikungunya Virus |
| <i>Update Information</i> | This entry was last updated in GDRI Edition 002 Release 05 |

Updates

| Specification of Current Version | | |
|----------------------------------|------|---------------|
| Publication | GDRI | |
| Edition | 002 | |
| Release | 49 | |
| Issue | 01 | 30 April 2025 |

All changes to GDRI Edition 002 after Release 01

| Release | Date | Change Notifications | |
|---------|-------------------|--|------------------|
| | | Title | CN No. |
| 49 | 30 April 2025 | Updates in the GDRI | <u>05 - 2025</u> |
| 48 | 17 January 2025 | Removal of Dengue risk in Italy | <u>01 - 2025</u> |
| 47 | 26 November 2024 | WNV in France | <u>52 - 2024</u> |
| 46 | 28 October 2024 | Updates in the GDRI | <u>50 - 2024</u> |
| 45 | 07 October 2024 | Dengue in France, Italy, Iran and UAE | <u>44 - 2024</u> |
| 44 | Issue 02 | | |
| | 31 July 2024 | Dengue Risk in France | <u>42 - 2024</u> |
| | Issue 01 | | |
| | 31 July 2024 | Malaria Risk in Costa Rica | <u>41 - 2024</u> |
| | | Yellow Fever and Dengue | <u>24 - 2024</u> |
| 43 | 04 April 2024 | Updates in the GDRI | <u>04 - 2024</u> |
| 42 | 05 February 2024 | Tropical Virus Risks in the GDRI | <u>02 - 2024</u> |
| 41 | 23 October 2023 | France, Italy and Spain (WNV & Dengue) | <u>34 - 2023</u> |
| 40 | 16 August 2023 | France (WNV & Dengue) | <u>32 - 2023</u> |
| 39 | 04 July 2023 | Malaria | <u>26 - 2023</u> |
| 38 | 09 May 2023 | Viral Haemorrhagic Fever | <u>09 - 2023</u> |
| | | Cuba | <u>08 - 2023</u> |
| 37 | 31 January 2023 | Uganda | <u>05 - 2023</u> |
| | | France | <u>01 - 2023</u> |
| 36 | 21 September 2022 | France and Monaco (Dengue) | <u>60 - 2022</u> |
| 35 | 30 August 2022 | Eswatini | <u>47 - 2022</u> |
| 34 | 21 July 2022 | Thailand | <u>42 - 2022</u> |
| 33 | 26 April 2022 | Netherlands | <u>32 - 2022</u> |
| | | China | <u>24 - 2022</u> |
| | | Viral Haemorrhagic Fever | <u>23 - 2022</u> |
| | | Yellow Fever | <u>21 - 2022</u> |
| | | Congo | <u>18 - 2022</u> |
| 32 | 20 August 2021 | Malaria Free Countries | <u>34 - 2021</u> |
| | | Dengue | <u>33 - 2021</u> |
| | | Guinea | <u>32 - 2021</u> |
| 31 | 05 May 2021 | Malaria | <u>10 - 2021</u> |
| | | Tropical Virus Risk | <u>09 - 2021</u> |
| 30 | 21 January 2021 | Tropical Virus Risk | <u>68 - 2021</u> |
| | | Venezuela | <u>59 - 2021</u> |
| 29 | 10 November 2020 | Netherlands | <u>63 - 2020</u> |
| 28 | 20 October 2020 | Netherlands | <u>62 - 2020</u> |
| 27 | 21 September 2020 | Spain | <u>60 - 2020</u> |

| | | | |
|----|---|--|------------------|
| 26 | 15 September 2020 | Germany | <u>50 - 2020</u> |
| 25 | 18 August 2020 | Spain | <u>49 - 2020</u> |
| 24 | 20 March 2020 | Changes made to: Cambodia Iran Italy Laos Myanmar Vietnam China Hong Kong (S.A.R.) Japan Macau (S.A.R.) Malaysia Singapore South Korea (Republic of) Taiwan Thailand Preliminaries - Malaria - Airport Stopovers | <u>14 - 2020</u> |
| 23 | 09 March 2020 | Italy | <u>12 - 2020</u> |
| 22 | 26 February 2020 | Changes made to: Cambodia Iran Italy Laos Myanmar Vietnam | <u>11 - 2020</u> |
| 21 | 17 February 2020 | Coronavirus | <u>07 - 2020</u> |
| 20 | 07 February 2020 | Changes made to: Hong Kong (S.A.R.) Japan Macau (S.A.R.) Malaysia Singapore South Korea (Republic of) Taiwan Thailand | <u>06 - 2020</u> |
| 19 | 24 January 2020 | China | <u>04 - 2020</u> |
| 18 | Issue 02 | | |
| | 03 September 2019 | France and Cyprus | <u>33 - 2019</u> |
| | Issue 01 | | |
| | 03 September 2019 | Tropical Virus Risk | <u>30 - 2019</u> |
| | | Timor | <u>29 - 2019</u> |
| | | Former Yugoslav Republic of Macedonia | <u>28 - 2019</u> |
| | | United States of America | <u>25 - 2019</u> |
| | | Oman | <u>24 - 2019</u> |
| 17 | 28 May 2019 | Tropical Virus Risk | <u>06 - 2019</u> |
| | | Cape Verde | <u>05 - 2019</u> |
| 16 | 17 September 2018 | Slovenia | <u>35 - 2018</u> |
| | | United Arab Emirates | <u>19 - 2018</u> |
| | | Japan | <u>18 - 2018</u> |
| 15 | <i>This release was superseded by Release 16 due to an urgent change.</i> | | |
| 14 | 15 August 2018 | Changes made to: France Monaco | <u>34 - 2018</u> |
| 13 | 10 May 2018 | Changes made to: Guinea Liberia Sierra Leone | <u>16 - 2018</u> |
| 12 | 17 January 2018 | Italy (Chikungunya) | <u>03 - 2018</u> |
| 11 | 02 October 2017 | Italy (Chikungunya) | <u>25 - 2017</u> |

| | | | |
|-----------|-------------------|---|------------------|
| 10 | 26 September 2017 | Changes made to: Burkina Faso Cote D'Ivoire Angola Burundi Cameroon Central African Republic Nigeria Senegal Uganda India | <u>20 - 2017</u> |
| 09 | 01 August 2017 | Changes made to: Azerbaijan Belize Borneo Cambodia China Colombia Eritrea Georgia Ko Samui Laos Malaysia Nepal Philippines Sri Lanka Thailand Vietnam | <u>16 - 2017</u> |
| 08 | 21 February 2017 | Somalia (Chikungunya) | <u>09 - 2017</u> |
| | | Palau and Montserrat (Tropical Virus Risk) | <u>08 - 2017</u> |
| 07 | 01 November 2016 | Uruguay (Tropical Virus Risk) | <u>43 - 2016</u> |
| | | Lesser Antilles (Tropical Virus Risk) | <u>42 - 2016</u> |
| | | Changes made to: Anguilla (Zika) Antigua and Barbuda (Zika) The Bahamas (Zika) Bangladesh (Zika) British Virgin Islands (Zika) Cambodia (Zika) Cook Islands (Zika) French Polynesia (Zika) Gabon (Zika) Grenada (Zika) Indonesia (Zika) Laos (Zika) Malaysia (Zika) Peru (Zika) Saint Barthelemy (Zika) Saint Kitts and Nevis (Zika) Singapore (Zika) Turks and Caicos Islands (Zika) The Cayman Islands (Tropical Virus Risk) Guinea - Bissau (Tropical Virus Risk) Argentina (Tropical Virus Risk) | <u>41 - 2016</u> |
| | | Polynesia | <u>40 - 2016</u> |
| | | Mexico | <u>39 - 2016</u> |
| | | Brunei Darussalam | <u>38 - 2016</u> |
| 06 | 27 September 2016 | United States of America (Tropical Virus Risk) | <u>49 - 2016</u> |
| 05 | 05 July 2016 | Addition of Previous Malaria Risk | <u>22 - 2016</u> |
| 04 | 11 May 2016 | Change made to: Aruba Belize Jamaica Micronesia (Federated States of) Papua New Guinea Philippines | <u>30 - 2016</u> |

| | | | |
|-----------|------------------|---|--------------------------------------|
| | | Saint Lucia Sint Maarten Vietnam | |
| 03 | 31 March 2016 | Changes made to: Cuba Dominica Former Netherlands Antilles (Bonaire) Maldives Marshall Islands Saint Vincent and the Grenadines Thailand Tonga Trinidad and Tobago | <u>17 - 2016</u> |
| | | <i>A change was made to the version control definitions and all Issue numbering information removed.</i> | |
| 02 | 02 February 2016 | Addition of Zika Virus to Tropical Virus Risk category | <u>14 - 2016</u> <u>13 - 2016</u> |
| 01 | 18 January 2016 | Complete rewrite of the GDRI | <u>10 - 2016</u> |

All changes to GDRI Edition 001 after Release 01

| Release | Date | Change Notifications | |
|---------|-------------------|---|------------------|
| | | Title | CN No. |
| 31 | 06 October 2015 | Malaria | <u>28 - 2015</u> |
| | | Preliminaries - Malaria | <u>27 - 2015</u> |
| 30 | 21 September 2015 | Saudi Arabia (MERS-CoV) | <u>24 - 2015</u> |
| 29 | 23 June 2015 | Chikungunya Virus | <u>14 - 2015</u> |
| | | Namibia | <u>13 - 2015</u> |
| 28 | 17 March 2015 | Malaria Maps | <u>06 - 2015</u> |
| 27 | 20 October 2014 | Viral Haemorrhagic Fever | <u>43 - 2014</u> |
| 26 | 14 October 2014 | West Nile Virus Risk | <u>42 - 2014</u> |
| 25 | 19 August 2014 | Chikungunya Virus Risk | <u>41 - 2014</u> |
| 24 | 08 July 2014 | Diego Garcia | <u>28 - 2014</u> |
| | | Chikungunya Virus Risk | <u>27 - 2014</u> |
| 23 | 17 June 2014 | Dominican Republic and Saint Lucia | <u>26 - 2014</u> |
| 22 | 13 February 2014 | Changes made to: British Virgin Islands Anguilla Saint Martin Sint Maarten Saint Bathelémy Former Netherlands Antilles Antigua and Barbuda St Kitts and Nevis Montserrat Guadeloupe Dominica Martinique | <u>01 - 2014</u> |
| 21 | Issue 02 | | |
| | 03 September 2013 | <i>Virgin Islands and Appendix 1 have been removed and updates made to the Welcome and Preliminaries pages.</i> | |
| | Issue 01 | | |
| | 03 September 2013 | West Nile Virus | <u>14 - 2013</u> |
| 20 | 09 July 2013 | Chikungunya Virus Risk | <u>04 - 2013</u> |
| 19 | 31 October 2012 | Algeria | <u>26 - 2012</u> |
| | | Hungary, Croatia and Kosovo | <u>25 - 2012</u> |
| 18 | 31 October 2012 | United States of America | <u>21 - 2012</u> |
| | | Iran, Iraq and Vietnam | <u>20 - 2012</u> |

| | | | |
|----|-------------------|--|------------------|
| 17 | 28 August 2012 | West Nile Virus | <u>19 - 2012</u> |
| 16 | 29 June 2012 | Malaria | <u>14 - 2012</u> |
| 15 | 28 March 2012 | West Nile Virus | <u>04 - 2012</u> |
| 14 | Issue 02 | | |
| | 07 November 2011 | <i>Spelling of Malaria corrected on all Malaria Risk Category subheadings. Contact information on Preliminaries pages updated.</i> | |
| | Issue 01 | | |
| | 07 November 2011 | Italy | <u>19 - 2011</u> |
| 13 | 04 October 2011 | Macedonia, Russia and Turkey | <u>18 - 2011</u> |
| 12 | 31 August 2011 | Albania, Israel and Russia | <u>15 - 2011</u> |
| 11 | 08 August 2011 | Greece | <u>13 - 2011</u> |
| | | Romania | <u>12 - 2011</u> |
| 10 | 01 September 2010 | West Nile Virus | <u>10 - 2010</u> |
| 09 | 06 October 2009 | Maldives | <u>27 - 2009</u> |
| 08 | 28 September 2009 | Canada, United States of America | <u>26 - 2009</u> |
| | | Italy | <u>25 - 2009</u> |
| 07 | 29 April 2009 | Italy | <u>11 - 2009</u> |
| 06 | 23 April 2008 | <i>This release is the first implementation of the online GDRI.</i> | |
| 05 | 31 January 2008 | Italy | <u>05 - 2007</u> |
| | | Jamaica | <u>20 - 2006</u> |
| 04 | 22 October 2007 | Preliminaries - Malaria - Airport Stopovers | <u>15 - 2007</u> |
| 03 | 15 October 2007 | Canada, United States of America | <u>08 - 2007</u> |
| | | Bahamas (The) | <u>07 - 2007</u> |
| 02 | 16 March 2007 | Egypt and Ethiopia | <u>02 - 2007</u> |
| 01 | 12 March 2007 | Public release – as PDF only. | |